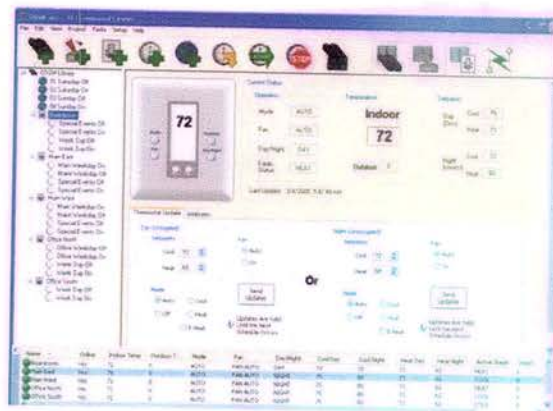


# Serial-Stat™

## XC-PCWIN Communications Software WINDOWS-BASED HVAC CONTROL & FACILITY MANAGEMENT SOFTWARE with LOCAL/REMOTE CAPABILITIES

### GENERAL DESCRIPTION

The XC-PCWIN XCI Command Center software allows full update and control of all XCI's communications based hardware. The software includes user-friendly features which allow simple, yet robust environment control. Only a personal computer is needed to gain access to all local and remote capabilities, whether via USB, serial port, Ethernet or Internet access. Features include full thermostat control and monitoring of all operating modes, setpoints and temperatures, clock/calendar timers for hands-free energy control, and facilities management windows which allow easy groupings and manipulation of complete buildings. The software operates as easily off site as it does locally, and includes built-in intelligence to help correct illegal operator settings which might damage equipment.



### Standard Features

#### Hardware Requirements

- Any PC with Windows XP or 2000 operating system
- At least one available standard PC serial port (RS-232), USB port, modem, and/or Ethernet port for connection of any XCI Serial-Stat Network Controller

#### Software Requirements

- Microsoft Windows XP or 2000 operating system or newer

#### Software Features

##### Thermostat Environment

- User definable thermostat names and addresses
- Monitor any Serial-Stat mode of operation, setpoints and current temperatures
- Change any Serial-Stat mode of operation or setpoints

##### Scheduler Environment

- Create, store and execute virtually an unlimited number of schedules
- Four schedule types – 2-Events, 4-Events and 6-Events per Day, plus Date Schedules and Vacation Schedules
- Schedules can set all operating conditions of the Serial-Stat
- Use any schedule with one or multiple Serial-Stats for control
- Download schedule information to any of the XC-SSAxx/CLK Network Controller family

##### Relay Environment

- Create, store and execute schedules for the XC-REL relay modules; capable of handling hundreds of relays
- Monitor and update individual relays on each XC-REL relay module

##### Table Environment

- Monitor all thermostats, relay modules and controllers in a project in a 'spreadsheet' format

