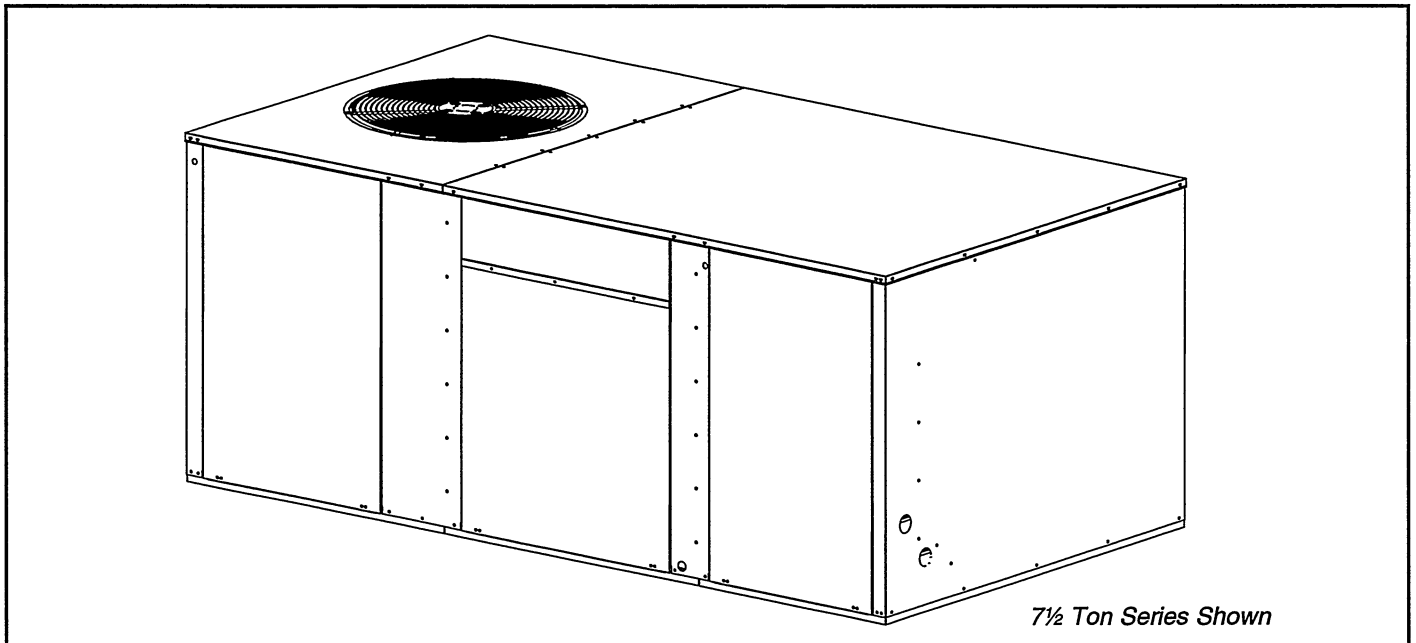

TECHNICAL SPECIFICATIONS

(*P4SM Series

Single Packaged Electric Cooling Units

(*P4SM 9 EER 7½ and 10 Ton Units

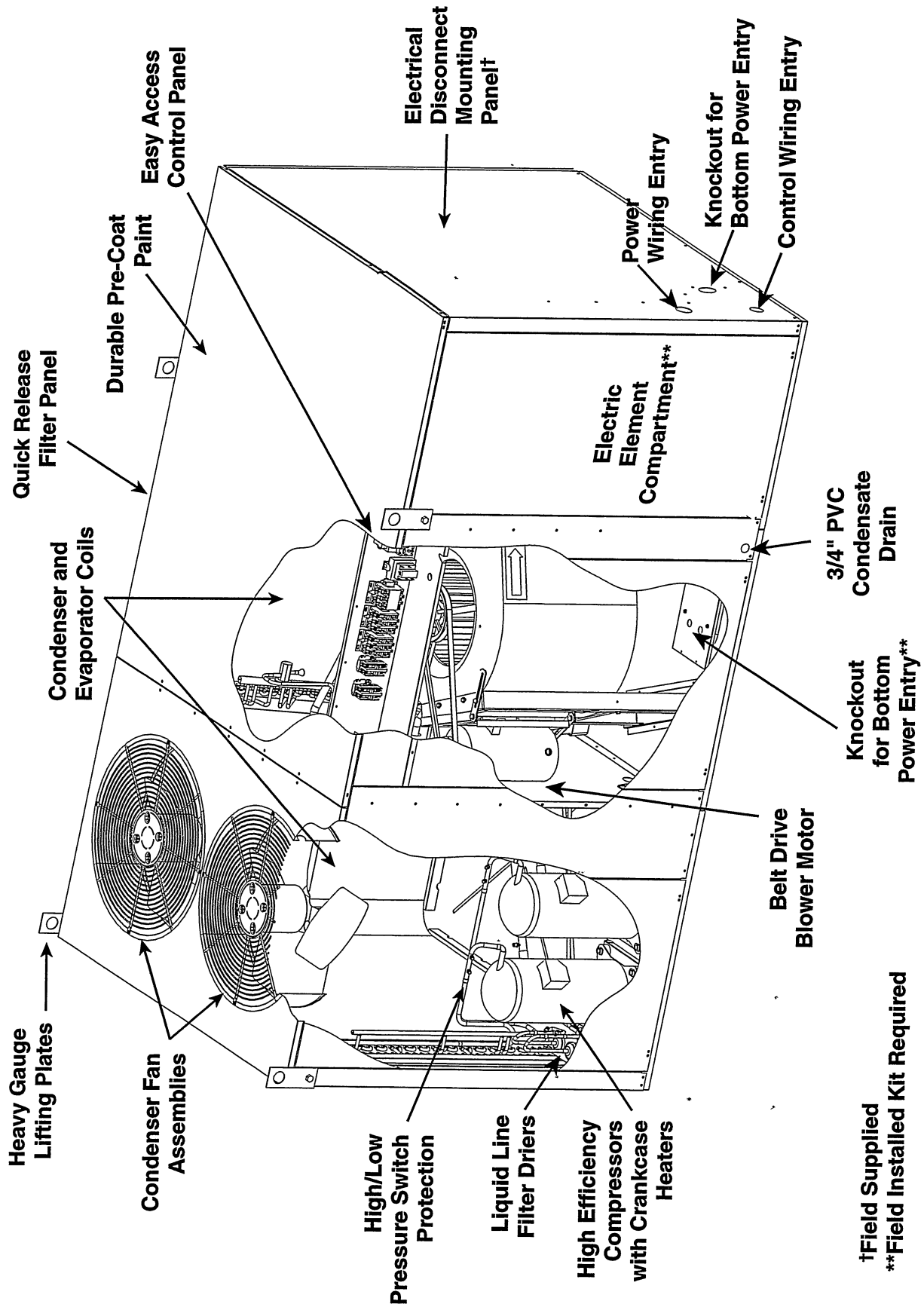
These 7½ and 10 ton units are designed specifically for retrofit applications and compatibility with most standard footprints. They take less time to install and retrofit, making the contractor's job more profitable. 7½ and 10 ton units offer flexibility in the replacement market by utilizing a database of major manufacturer's unit footprints and offers roof curb transitions to meet virtually any configuration.



7½ Ton Series Shown

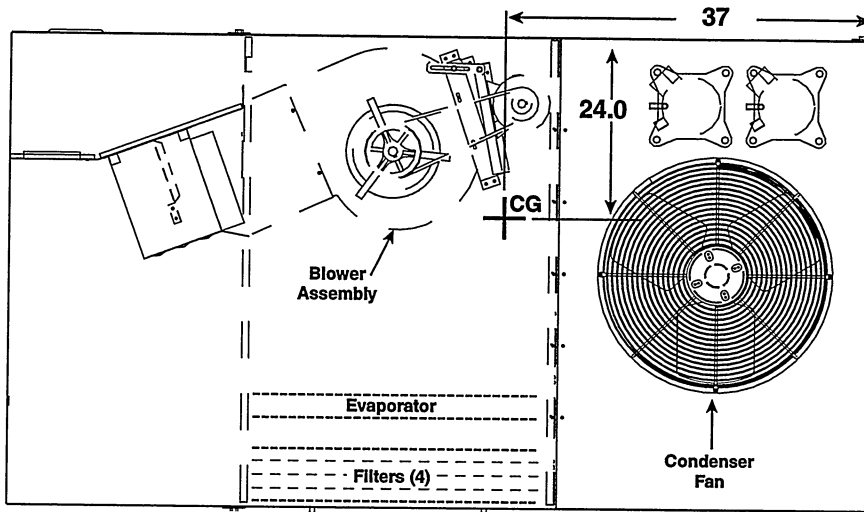
FEATURES AND BENEFITS

- **Lifting Lugs**
Eliminates need for spacer bar and complicated rigging — helps protect the unit during installation.
- **Convertible Air Delivery**
Fits most standard applications and easily converts to horizontal airflow with kit.
- **Compatibility**
Fits most standard rooftop applications — can be easily adapted for exceptions.
Footprint database available for cross-reference.
- **Fully Insulated Bottom Pan**
Helps ensure quiet operation and prevents condensation.
- **Quick-Release Filter Access Panels**
Requires no special servicing tools.
- **20-Gauge Precoated Paint**
Promotes corrosion resistance and long life.
- **Two-Stage Cooling**
Offers cooling ranges from 45,000/90,000 to 60,000/120,000 Btu/h.
Dual refrigeration circuits.
- **For Easy Service**
Hi/low service ports allow quick access without disrupting operation.
Hi/low pressure switches ensure long compressor life.
Proven, industry standard components for service and availability.
- **Commercial Warranty**
1 year limited parts
5 year compressor

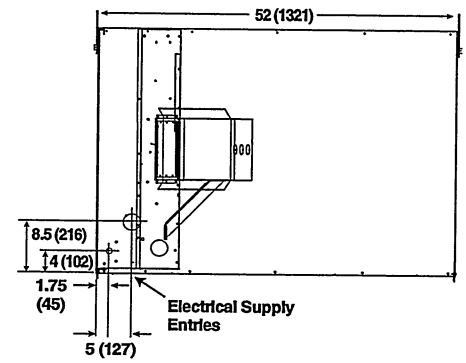


†Field Supplied
 **Field Installed Kit Required

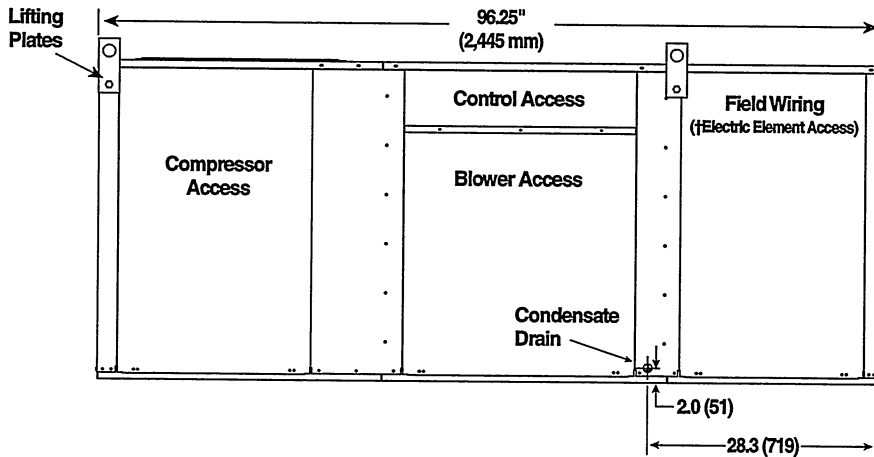
(*)P4SM-090 SERIES – PHYSICAL DATA



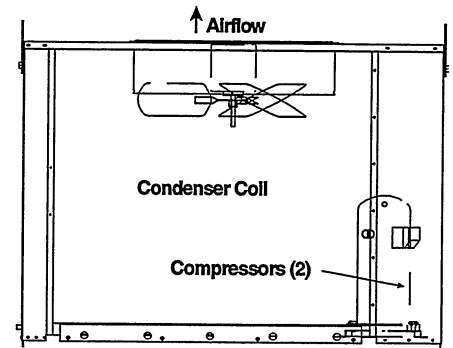
TOP VIEW



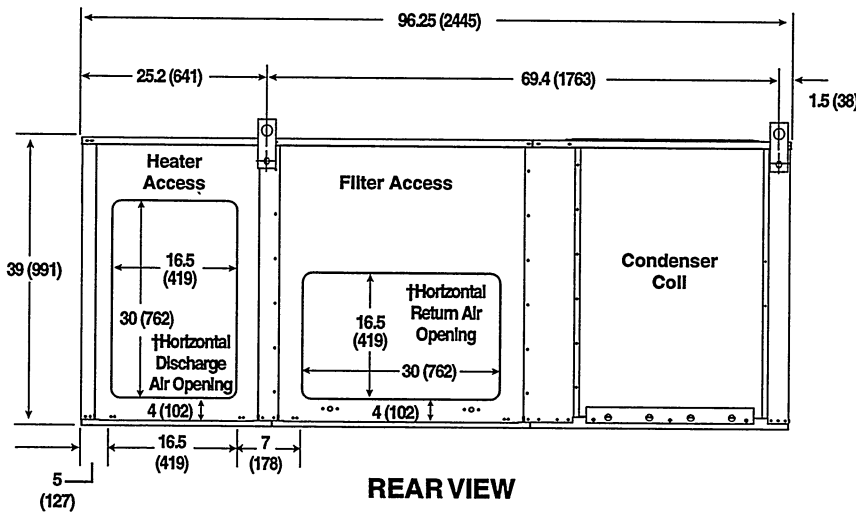
HEAT EXCHANGER END



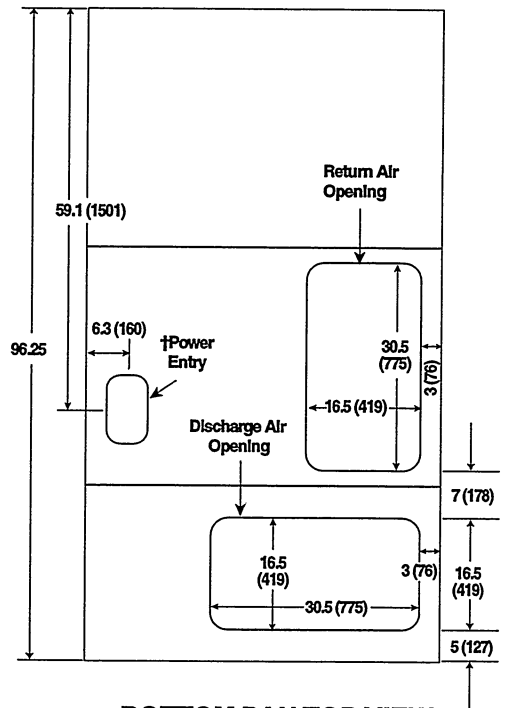
FRONT VIEW



CONDENSER END



REAR VIEW



BOTTOM PAN TOP VIEW

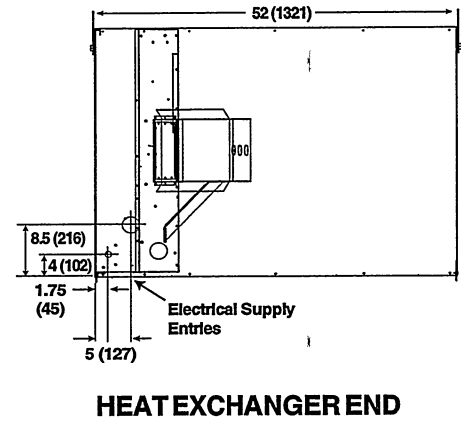
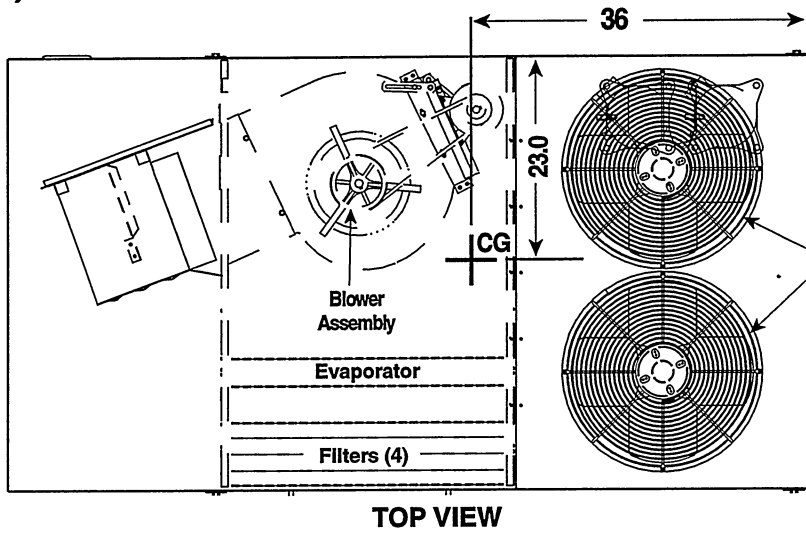
7½ Ton

Model No.	Unit Weight*		Shipping Weight		Center of Gravity Inches (mm)		Height C Inches (mm)
	Lbs.	Kg.	Lbs.	Kg.	A	B	
(*)P4SM-090C	719	327	1163	527	37 (940)	24 (610)	39 (991)

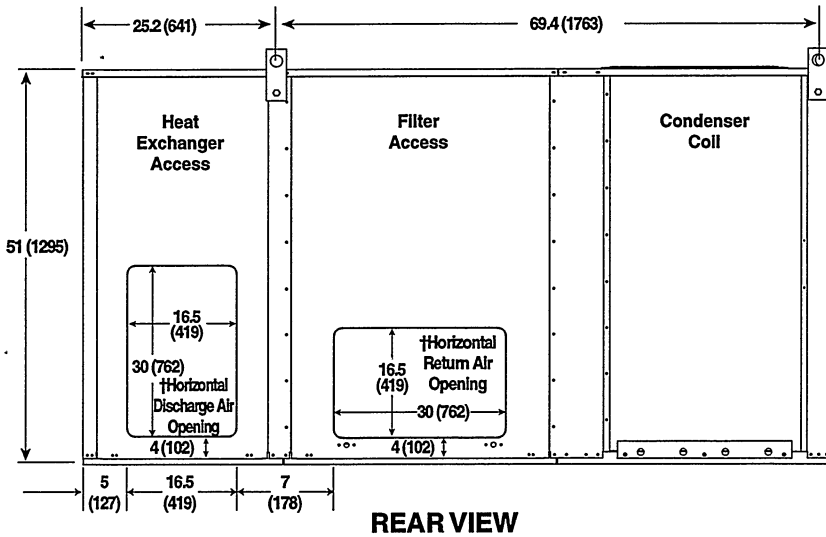
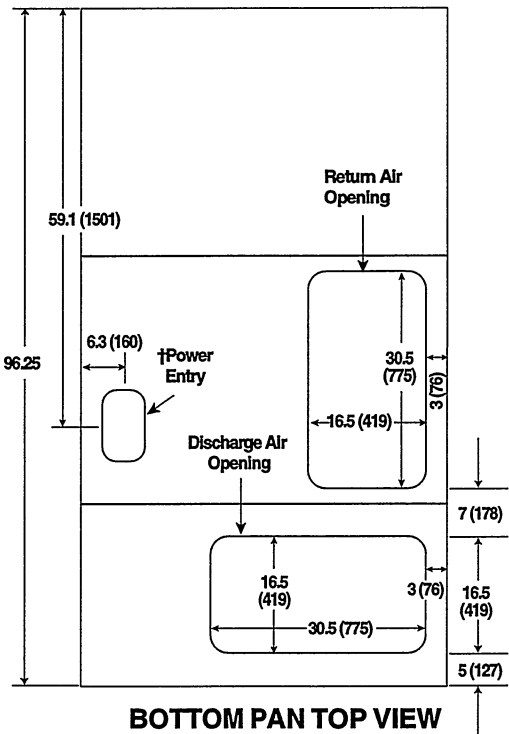
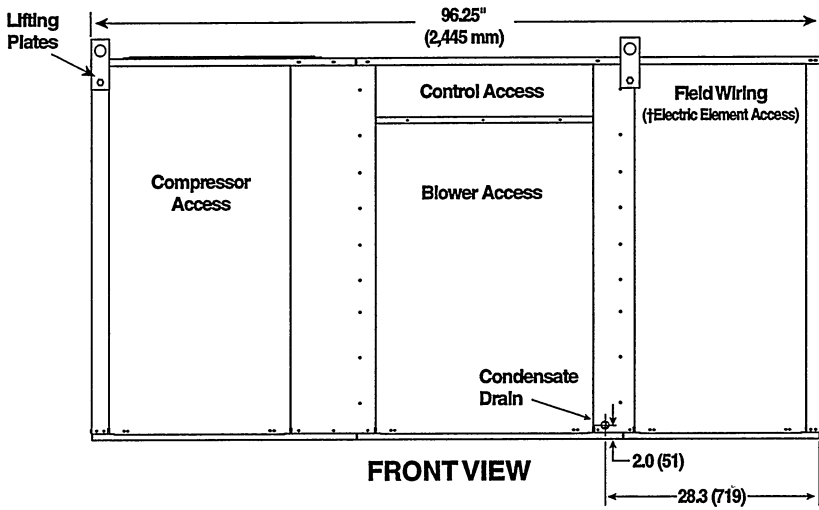
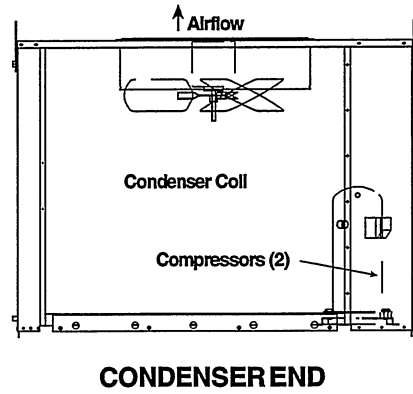
* Unit weight without packaging or field installed accessories.

† Field Installed Kit

(*)P4SM-120 SERIES – PHYSICAL DATA



Condenser Fans



10 Ton

Model No.	Unit Weight*		Shipping Weight		Center of Gravity Inches (mm)		Height C Inches (mm)
	Lbs.	Kg.	Lbs.	Kg	A	B	
(*)P4SM-120C	924	420	1378	626	36 (914)	23 (584)	51 (1295)

* Unit weight without packaging or field installed accessories.

† Field Installed Kit

SPECIFICATIONS AND ELECTRICAL DATA

Model (*)P4SM	090C	090D	120C	120D
Performance				
Capacity-Cooling BTUH (High)	90,000	90,000	120,000	120,000
Capacity-Cooling BTUH (Low)	45,000	45,000	60,000	60,000
Cooling-Efficiency EER	9.00	9.00	9.00	9.00
Electrical Rating - 60 Hz.				
Phase	3	3	3	3
Operating Voltage	187-253	414-506	187-253	414-506
Maximum Rated Ampacity	38.6	19.4	56.1	25.0
Minimum Circuit Ampacity (MCA)	42.2	21.2	61.3	27.2
Max. Overcurrent Protection (MOP)	60	30	90	40
Compressor Data				
	2 ea.	2 ea.	2 ea.	2 ea.
Volts	208/230	460	208/230	460
Rated Load Amps	14.3	7.2	20.7	8.9
Lock Rotor Amps	91	46	128	63
Indoor Blower - Belt Drive				
Wheel Diameter	12 x 12	12 x 12	15 x 15	15 x 15
Motor-HP/RPM	2 / 1725	2 / 1725	3 / 1725	3 / 1725
Motor Amps	6.3	3.1	9.1	4.4
Airflow Range (CFM)	2700 - 3500		3600 - 4400	
Outdoor Fan(s)				
	1 ea.	1 ea.	2 ea.	2 ea.
Motor-HP/RPM	3/4-1060	3/4-1060	1/2 - 1075	1/2 - 1075
Motor Amps	3.7	1.9	2.8	1.4
Fan Diameter/CFM	24" / 5200	24" / 5200	22" / 8600	22" / 8600
Refrigerant Charge - oz.				
Stage 1 Circuit	88	88	136	136
Stage 2 Circuit	88	88	136	136
High Pressure Switch (PSIG)	425 ± 10 Manual Reset		425 ± 10 Manual Reset	
Loss of Charge Switch (PSIG)	Cut Out: 5 ± 5		Cut Out: 5 ± 5	
	Cut In: 20 ± 5		Cut In: 20 ± 5	
Freeze Protection Thermostat	Opens (°F): 28 ± 5		Opens (°F): 28 ± 5	
	Closes (°F): 57 ± 6		Closes (°F): 57 ± 6	
Filters				
Style	Disposable - 2" Pleated		Disposable - 2" Pleated	
Size (Qty.)	16" x 20" x 2" (4)		16" x 25" x 2" (4)	

(*)P4SM-090(-)C COOLING (With One Compressor Operating)

CFM	Entering Dry Bulb	Entering Wet Bulb	Outdoor Air Temperature											
			65°F			75°F			85°F			95°F		
			T.C.	S.C.	kW	T.C.	S.C.	kW	T.C.	S.C.	kW	T.C.	S.C.	kW
3000	75	62	41.7	30.7	4.87	40.2	29.9	5.14	38.6	29.1	5.45	36.9	28.2	5.82
	75	67	45.8	26.0	5.04	44.2	25.3	5.31	42.6	24.5	5.64	40.8	23.7	6.01
	75	72	50.6	20.6	5.26	49.2	20.0	5.55	47.5	19.3	5.90	45.7	18.6	6.28
	80	62	41.9	35.5	4.87	40.4	34.7	5.14	38.8	33.8	5.46	37.1	32.9	5.83
	80	67	45.7	31.0	5.03	44.2	30.3	5.31	42.6	29.5	5.64	40.8	28.7	6.02
	80	72	50.2	25.8	5.25	48.7	25.2	5.53	47.0	24.5	5.87	45.1	23.8	6.25
	85	62	42.3	40.0	4.89	40.9	39.2	5.16	39.3	38.2	5.48	37.8	37.1	5.86
	85	67	45.7	35.6	5.03	44.3	34.9	5.31	42.7	34.1	5.64	40.9	33.2	6.02
3375	75	62	43.7	34.6	5.15	42.1	33.7	5.42	40.4	32.9	5.74	38.6	31.9	6.11
	75	67	47.5	28.5	5.32	46.1	27.8	5.61	44.3	27.1	5.94	42.5	26.2	6.31
	75	72	52.5	21.6	5.57	51.0	21.0	5.87	49.2	20.4	6.22	47.3	19.6	6.62
	80	62	44.1	40.5	5.17	42.6	39.6	5.44	41.0	38.6	5.77	39.2	37.5	6.14
	80	67	47.7	34.6	5.33	46.2	33.9	5.61	44.5	33.1	5.94	42.6	32.2	6.32
	80	72	51.8	28.3	5.53	50.3	27.7	5.83	48.5	27.0	6.17	46.6	26.2	6.57
	85	62	45.0	45.0	5.21	43.8	43.8	5.50	42.4	42.4	5.84	40.9	40.9	6.24
	85	67	48.0	40.7	5.34	46.5	40.0	5.63	44.8	39.1	5.96	43.0	38.2	6.34
3750	75	62	45.2	38.1	5.33	43.6	37.3	5.60	41.8	36.3	5.92	39.9	35.3	6.30
	75	67	48.8	31.0	5.50	47.3	30.3	5.79	45.5	29.5	6.12	43.5	28.7	6.50
	75	72	53.7	22.6	5.76	52.2	22.0	6.06	50.4	21.4	6.41	48.1	20.6	6.81
	80	62	45.9	44.3	5.37	44.6	43.3	5.65	42.4	42.4	5.96	40.8	40.8	6.34
	80	67	49.1	38.2	5.52	47.6	37.5	5.80	45.8	36.7	6.13	44.0	35.8	6.52
	80	72	53.1	30.8	5.72	51.5	30.2	6.02	49.7	29.5	6.37	47.8	28.7	6.77
	85	62	47.8	47.8	5.45	46.6	46.6	5.75	45.1	45.1	6.10	43.6	43.6	6.50
	85	67	49.7	45.3	5.55	48.2	44.5	5.84	46.5	43.5	6.17	44.7	42.4	6.56
	85	72	53.4	38.2	5.74	52.0	37.6	6.05	50.2	36.8	6.39	48.0	36.0	6.80

(*)P4SM-090(-)C COOLING (With Two Compressors Operating)

CFM	Entering Dry Bulb	Entering Wet Bulb	Outdoor Air Temperature											
			85°F			95°F			105°F			115°F		
			T.C.	S.C.	kW	T.C.	S.C.	kW	T.C.	S.C.	kW	T.C.	S.C.	kW
3000	75	62	84.1	64.8	8.69	80.4	63.0	9.40	76.8	61.2	10.18	73.3	59.4	11.07
	75	67	92.1	54.0	9.00	88.6	52.4	9.73	84.8	50.7	10.57	81.0	49.1	11.50
	75	72	102.0	41.6	9.48	98.3	40.2	10.24	94.3	38.7	11.12	90.3	37.2	12.10
	80	62	84.3	75.5	8.70	80.9	73.6	9.41	77.4	71.6	10.21	74.0	69.7	11.11
	80	67	92.1	65.7	9.00	88.4	64.0	9.72	84.7	62.4	10.57	81.0	59.8	11.49
	80	72	100.7	53.7	9.41	96.9	52.2	10.16	93.0	50.7	11.04	89.0	49.1	12.01
	85	62	85.9	84.2	8.76	82.2	82.1	9.47	79.3	79.3	10.29	76.5	76.5	11.24
	85	67	92.2	75.9	9.00	88.6	74.2	9.73	85.0	72.4	10.58	81.3	70.6	11.51
	85	72	100.7	65.5	9.41	96.9	63.9	10.16	93.0	62.3	11.04	89.3	60.8	12.03
3375	75	62	85.7	68.4	8.95	81.9	66.5	9.67	78.3	64.7	10.45	74.6	62.8	11.35
	75	67	93.6	56.4	9.27	90.0	54.8	10.01	86.1	53.1	10.86	82.2	51.5	11.79
	75	72	103.6	42.6	9.78	99.7	41.1	10.54	95.7	39.6	11.43	91.6	38.1	12.41
	80	62	86.3	79.9	8.97	82.8	77.8	9.70	79.3	75.6	10.50	75.8	73.3	11.42
	80	67	93.6	68.4	9.27	90.0	66.8	10.00	86.2	65.1	10.86	82.3	63.3	11.79
	80	72	102.2	56.1	9.71	98.4	54.6	10.46	94.4	53.1	11.35	90.4	51.5	12.32
	85	62	88.1	88.1	9.04	85.2	85.2	9.80	82.3	82.3	10.66	79.3	79.3	11.61
	85	67	94.1	80.6	9.29	90.5	78.8	10.03	86.7	76.9	10.88	83.0	75.0	11.89
3750	75	62	87.3	71.9	9.12	83.4	70.0	9.83	79.6	68.0	10.65	75.9	66.1	11.54
	75	67	95.1	58.9	9.47	91.3	57.3	10.19	87.4	55.6	11.04	83.4	53.9	11.98
	75	72	105.0	43.6	9.97	101.1	42.2	10.74	96.9	40.7	11.63	92.7	39.1	12.61
	80	62	88.5	84.0	9.17	84.7	81.4	9.89	81.4	78.9	10.73	76.9	76.8	11.60
	80	67	95.4	72.1	9.49	91.5	70.4	10.20	87.6	68.6	11.05	83.6	66.8	11.99
	80	72	103.7	58.6	9.90	99.8	57.1	10.67	95.7	55.5	11.55	91.5	53.9	12.53
	85	62	91.1	91.1	9.28	88.1	88.1	10.03	85.0	85.0	10.92	81.9	81.9	11.89
	85	67	96.0	85.1	9.51	92.2	83.2	10.24	88.4	81.2	11.08	84.6	79.1	12.06
	85	72	103.8	73.3	9.91	100.1	70.3	10.68	96.3	68.8	11.59	92.0	67.1	12.57

T.C.- Total net cooling capacity (mbtuh). S.C.- Sensible cooling capacity (mbtuh).

(*)P4SM-0120(-)C COOLING (With One Compressor Operating)

CFM	Entering Dry Bulb	Entering Wet Bulb	Outdoor Air Temperature											
			65°F			75°F			85°F			95°F		
			T.C.	S.C.	kW	T.C.	S.C.	kW	T.C.	S.C.	kW	T.C.	S.C.	kW
3750	75	62	55.1	40.3	6.34	53.2	39.4	6.66	51.2	38.3	7.04	48.8	36.8	7.47
	75	67	60.7	33.9	6.56	59.0	33.2	6.85	56.9	32.2	7.21	54.6	31.2	7.63
	75	72	66.6	27.1	6.82	65.1	26.4	7.10	63.1	25.6	7.45	60.7	24.6	7.86
	80	62	54.9	46.1	6.34	53.2	45.2	6.66	51.2	44.1	7.04	49.0	42.8	7.47
	80	67	60.4	40.4	6.55	58.8	39.6	6.84	56.8	38.6	7.20	54.3	37.5	7.63
	80	72	66.4	33.7	6.80	64.8	33.1	7.09	62.8	32.2	7.43	60.4	31.3	7.85
	85	62	55.3	51.9	6.35	53.6	51.0	6.67	51.7	49.8	7.05	49.6	48.4	7.49
	85	67	60.3	46.3	6.54	58.6	45.5	6.84	56.6	44.4	7.20	54.3	43.3	7.62
4250	85	72	66.0	40.2	6.79	64.3	39.5	7.07	62.4	38.7	7.42	60.1	37.7	7.83
	75	62	58.2	45.8	6.66	56.5	44.9	6.96	54.3	43.8	7.32	51.8	42.5	7.75
	75	67	63.6	37.8	6.89	61.9	37.1	7.17	59.8	36.1	7.52	57.3	35.0	7.93
	75	72	69.9	28.7	7.17	68.3	28.0	7.46	66.1	27.2	7.80	63.7	26.3	8.20
	80	62	58.7	53.6	6.68	56.9	52.6	6.98	54.8	51.4	7.34	52.5	50.0	7.77
	80	67	63.8	45.8	6.90	62.0	45.1	7.18	59.9	44.1	7.52	57.5	43.0	7.94
	80	72	69.4	37.5	7.15	67.6	36.9	7.43	65.4	36.0	7.76	63.0	35.0	8.17
	85	62	59.7	59.7	6.72	58.4	58.4	7.03	56.6	56.6	7.40	54.7	54.7	7.84
4750	85	67	63.7	53.8	6.89	62.2	53.0	7.18	60.1	52.0	7.53	57.7	50.8	7.94
	85	72	69.4	46.1	7.15	67.6	45.4	7.43	65.5	44.0	7.77	63.1	43.0	8.17
	75	62	60.5	51.0	6.87	58.9	50.2	7.16	56.5	49.0	7.51	54.0	47.7	7.92
	75	67	65.7	41.4	7.10	63.9	40.7	7.38	61.8	39.7	7.71	59.2	38.6	8.12
	75	72	71.9	30.1	7.38	70.2	29.5	7.67	68.0	28.7	8.01	65.5	27.8	8.41
	80	62	61.5	59.6	6.92	59.9	58.4	7.20	57.3	57.2	7.54	55.2	55.2	7.97
	80	67	66.0	51.1	7.11	64.2	50.4	7.39	62.1	49.4	7.72	59.6	48.2	8.13
	80	72	71.3	41.1	7.35	69.5	40.4	7.64	67.4	39.6	7.97	64.8	38.6	8.38
4750	85	62	64.0	64.0	7.02	62.7	62.7	7.32	60.9	60.9	7.67	58.8	58.8	8.10
	85	67	66.5	60.6	7.13	64.8	59.7	7.41	62.7	58.6	7.75	60.3	57.2	8.16
	85	72	71.6	51.0	7.37	69.8	50.2	7.65	67.6	49.3	7.99	65.1	48.3	8.39

(*)P4SM-0120(-)C COOLING (With Two Compressors Operating)

CFM	Entering Dry Bulb	Entering Wet Bulb	Outdoor Air Temperature											
			85°F			95°F			105°F			115°F		
			T.C.	S.C.	kW	T.C.	S.C.	kW	T.C.	S.C.	kW	T.C.	S.C.	kW
3750	75	62	111.8	89.0	11.84	106.6	86.4	12.69	101.8	84.0	13.68	96.9	81.6	14.83
	75	67	123.2	73.3	12.21	117.9	71.0	13.06	112.4	68.7	14.03	107.1	66.4	15.22
	75	72	135.7	55.6	12.71	130.5	53.5	13.55	124.8	51.4	14.56	119.2	49.3	15.74
	80	62	112.6	104.4	11.86	107.6	101.7	12.72	102.9	99.0	13.72	98.4	96.2	14.90
	80	67	123.0	89.2	12.20	117.7	86.8	13.05	112.3	84.4	14.03	107.0	82.1	15.21
	80	72	135.0	72.9	12.68	129.6	70.8	13.52	123.9	68.7	14.51	118.1	66.5	15.70
	85	62	115.7	115.7	11.96	111.6	111.6	12.85	107.5	107.5	13.87	103.5	103.5	15.08
	85	67	123.4	105.0	12.22	118.2	102.6	13.07	112.9	100.1	14.05	107.8	97.7	15.22
4250	85	72	134.9	89.7	12.67	129.5	86.8	13.51	123.9	84.6	14.52	118.3	82.4	15.74
	75	62	114.3	94.7	12.11	108.9	92.1	12.96	103.6	89.5	13.94	98.6	86.9	15.11
	75	67	125.5	77.2	12.50	120.1	74.9	13.34	114.4	72.5	14.33	108.9	70.2	15.48
	75	72	137.9	57.1	13.03	132.6	55.1	13.86	126.8	53.0	14.86	121.0	50.9	16.04
	80	62	115.7	111.3	12.16	110.7	108.1	13.02	105.3	105.1	14.02	101.0	101.0	15.21
	80	67	125.2	94.8	12.49	120.0	92.5	13.34	114.5	90.1	14.33	109.0	87.7	15.48
	80	72	137.0	76.7	12.98	131.7	74.6	13.82	125.8	72.4	14.82	120.0	70.2	16.00
	85	62	120.7	120.7	12.32	116.4	116.4	13.21	112.1	112.1	14.22	107.8	107.8	15.43
4750	85	67	126.3	112.6	12.53	121.0	110.0	13.37	115.6	107.3	14.38	110.4	104.6	15.54
	85	72	137.3	94.6	12.99	131.9	92.5	13.83	126.2	90.3	14.83	120.4	88.0	16.02
	75	62	116.5	100.3	12.29	111.0	97.6	13.14	105.6	94.8	14.12	100.5	92.1	15.30
	75	67	127.5	81.0	12.69	122.0	78.7	13.52	116.2	76.3	14.52	110.5	74.0	15.66
	75	72	139.9	58.7	13.23	134.4	56.7	14.06	128.6	54.5	15.06	122.6	52.4	16.24
	80	62	117.7	117.5	12.36	113.4	113.4	13.21	108.9	108.9	14.23	104.5	104.5	15.43
	80	67	127.5	100.5	12.69	122.2	98.2	13.53	116.5	95.7	14.52	110.9	93.2	15.68
	80	72	139.0	80.5	13.19	133.5	78.4	14.02	127.6	76.2	15.02	121.8	74.0	16.20
4750	85	62	125.1	125.1	12.60	120.7	120.7	13.48	116.2	116.2	14.51	111.7	111.7	15.71
	85	67	129.0	119.6	12.75	123.7	116.8	13.59	118.3	113.8	14.60	113.1	110.4	15.78
	85	72	139.2	100.3	13.21	134.0	98.2	14.04	128.1	95.9	15.04	122.3	93.6	16.22

T.C.- Total net cooling capacity (mbtuh). S.C.- Sensible cooling capacity (mbtuh).

(*)P4SM-090 Series Fan Performance

Vertical Discharge

Air Volume (CFM)	External Static Pressure (Inches Water Column)							
	0.2	0.4	0.5	0.6	0.7	0.8	0.9	1.0
	BHP RPM (KW)	BHP RPM (KW)	BHP RPM (KW)	BHP RPM (KW)	BHP RPM (KW)	BHP RPM (KW)	BHP RPM (KW)	BHP RPM (KW)
2600			1.00 788	1.04 812	1.10 842	1.19 895	1.29 944	1.38 988
			0.91	0.95	1.00	1.08	1.17	1.26
2800		1.03 756	1.12 816	1.17 845	1.21 875	1.30 912	1.40 950	1.47 991
		0.94	1.02	1.06	1.10	1.18	1.27	1.34
3000	1.07 730	1.18 785	1.29 840	1.34 865	1.38 895	1.49 945	1.58 989	
	0.97	1.07	1.17	1.22	1.26	1.36	1.44	
3200	1.17 752	1.31 810	1.44 868	1.49 900	1.56 924	1.68 980	1.77 1030	
	1.06	1.19	1.31	1.36	1.42	1.53	1.61	
3400	1.40 808	1.51 864	1.63 910	1.68 932	1.74 955	1.86 1010		
	1.27	1.37	1.48	1.53	1.58	1.69		
3600	1.63 863	1.71 910	1.80 942	1.86 965	1.90 982			
	1.48	1.56	1.64	1.69	1.73			

Horizontal Discharge

Air Volume (CFM)	External Static Pressure (Inches Water Column)							
	0.2	0.4	0.5	0.6	0.7	0.8	0.9	1.0
	BHP RPM (KW)	BHP RPM (KW)	BHP RPM (KW)	BHP RPM (KW)	BHP RPM (KW)	BHP RPM (KW)	BHP RPM (KW)	BHP RPM (KW)
2600			0.96 758	0.99 785	1.01 815	1.03 850	1.06 905	1.10 940
			0.87	0.90	0.92	0.94	0.96	1
2800		0.99 725	1.03 780	1.06 810	1.07 840	1.12 880	1.21 920	1.25 955
		0.90	0.94	0.96	0.97	1.02	1.10	1.14
3000	1.01 700	1.07 755	1.10 805	1.12 830	1.19 860	1.29 905	1.37 940	1.46 970
	0.92	0.97	1.00	1.02	1.08	1.17	1.25	1.33
3200	1.10 720	1.12 780	1.21 830	1.25 865	1.35 895	1.49 925	1.58 955	1.65 987
	1.00	1.02	1.10	1.14	1.23	1.36	1.44	1.5
3400	1.26 752	1.34 820	1.42 855	1.52 880	1.62 910	1.70 950	1.78 985	
	1.15	1.22	1.29	1.38	1.47	1.55	1.62	
3600	1.43 810	1.56 875	1.65 905	1.74 935	1.82 960	1.93 982		
	1.30	1.42	1.50	1.58	1.66	1.76		

Notes:

1. BHP - Brake Horsepower Input to Fan
 2. Boldface indicates factory recommended blower operating range.
 3. Values include losses for air filters, unit casing, and dry evaporator coil.
- See Accessory Performance Data table for additional static pressure information.

(*)P4SM-120 Series Fan Performance

Vertical Discharge

Air Volume (CFM)	External Static Pressure (Inches Water Column)							
	0.2	0.4	0.5	0.6	0.7	0.8	0.9	1.0
	BHP RPM (KW)	BHP RPM (KW)	BHP RPM (KW)	BHP RPM (KW)	BHP RPM (KW)	BHP RPM (KW)	BHP RPM (KW)	BHP RPM (KW)
3600				1.56	1.63	1.69	1.76	
				1.42	1.48	1.54	1.60	
3800			1.63	1.69	1.78	1.89	1.99	2.09
			1.48	1.54	1.62	1.72	1.81	1.90
4000		1.76	1.80	1.88	1.93	2.07	2.21	2.33
		749	777	805	829	854	879	905
4200	1.71	1.92	1.98	2.04	2.18	2.32	2.41	2.50
	720	773	800	827	850	875	900	926
4400	1.87	2.08	2.17	2.31	2.45	2.53	2.63	2.59
	745	798	825	850	874	900	924	925
4600	2.03	2.23	2.42	2.57	2.66	2.75	2.86	
	767	824	848	872	898	923	950	
4800	2.23	2.53	2.68	2.79	2.89	2.99		
	790	846	870	896	922	950		
	2.03	2.30	2.44	2.54	2.63	2.72		

Horizontal Discharge

Air Volume (CFM)	External Static Pressure (Inches Water Column)							
	0.2	0.4	0.5	0.6	0.7	0.8	0.9	1.0
	BHP RPM (KW)	BHP RPM (KW)	BHP RPM (KW)	BHP RPM (KW)	BHP RPM (KW)	BHP RPM (KW)	BHP RPM (KW)	BHP RPM (KW)
3600				1.48	1.59	1.67	1.76	
				1.35	1.45	1.52	1.60	
3800			1.54	1.65	1.75	1.82	1.91	2.02
			740	759	782	805	830	855
4000			1.73	1.81	1.89	1.96	2.09	2.21
			760	781	805	829	854	879
4200		1.81	1.89	1.98	2.07	2.20	2.34	2.41
		758	779	803	827	850	877	901
4400		1.65	1.72	1.80	1.88	2.00	2.13	2.19
		776	800	825	850	876	900	924
4600		1.99	2.07	2.13	2.30	2.46	2.54	2.62
		776	800	825	850	876	900	924
4800	2.10	2.17	2.23	2.37	2.52	2.65	2.75	
	774	799	823	848	874	898	921	
4800	1.91	1.97	2.03	2.16	2.29	2.41	2.50	
	773	822	850	872	895	919		
	2.18	2.34	2.50	2.65	2.77	2.88		
	1.98	2.13	2.27	2.41	2.52	2.62		

Notes:

1. BHP - Brake Horsepower Input to Fan
 2. Boldface indicates factory recommended blower operating range.
 3. Values include losses for air filters, unit casing, and dry evaporator coil.
- See Accessory Performance Data table for additional static pressure information.

Accessory Performance Data

Model No.	Air Volume (CFM)	Total Resistance (inches water column)								
		Wet Evaporator Coil	Downflow Economizer	Horizontal Economizer	Step Down Diffuser System				Flush Mount Diffuser System	Throw Feet
					2 Ends Open	2 Ends Open w/1 Side Open	2 Ends Open w/2 Sides Open	Throw Feet		
P4SM-090	2600	0.12	0.30	0.04	0.20	0.20	0.15	24-29	0.17	19-24
	2800	0.14	0.35	0.04	0.25	0.25	0.20	25-30	0.20	20-28
	3000	0.16	0.40	0.04	0.30	0.30	0.25	27-33	0.25	21-29
	3200	0.18	0.45	0.05	0.40	0.38	0.30	28-35	0.31	22-29
	3400	0.20	0.50	0.05	0.50	0.46	0.40	30-37	0.37	22-30
	3600	0.22	0.55	0.05	0.60	0.55	0.50	32-39	0.43	23-31

Model No.	Air Volume (CFM)	Total Resistance (inches water column)								
		Wet Evaporator Coil	Down Flow Economizer	Horizontal Economizer	Step Down Diffuser System				Flush Mount Diffuser System	Throw Feet
					2 Ends Open	2 Ends Open w/1 Side Open	2 Ends Open w/2 Sides Open	Throw Feet		
P4SM-120	3600	0.12	0.20	0.04	0.35	0.25	0.20	25-33	0.17	22-29
	3800	0.13	0.22	0.04	0.40	0.30	0.25	27-35	0.18	22-30
	4000	0.14	0.24	0.04	0.45	0.35	0.30	29-37	0.21	24-33
	4200	0.16	0.27	0.05	0.50	0.40	0.35	32-40	0.24	26-35
	4400	0.18	0.30	0.05	0.55	0.45	0.40	34-42	0.27	28-37
	4600	0.20	0.33	0.05	0.60	0.50	0.45	36-44	0.30	30-39

Bold italicized numbers indicate factory blower setting.

* The distance the air from the grille travels from the diffuser before it slows down to 50 ft. per minute. All sides open.

ACCESSORIES

NORDYNE		P4SM-090	P4SM-120
Part #	Description		
547860	Hinged Roof Curb 8" High - K/D		
547861	Hinged Roof Curb 14" High - K/D	X	X
547862	Hinged Roof Curb 18" High - K/D	X	X
547863	Hinged Roof Curb 24" High - K/D	X	X
547864	0-35% Manual Outside Air Damper	X	X
547865	0-35% Motorized Damper - Only	X	
547866	Economizer - Modulating w/ Relief, Adapts Horizontal	X	X
547883	Economizer - 3 Position w/ Relief, Adapts Horizontal	X	
547884	Economizer - 3 Position w/ Relief, Adapts Horizontal	X	
547875	Economizer - Modulating w/ Relief, Adapts Horizontal		X
547869	20" Supply & Return Transition Round		X
547870	20" Flush Mount Concentric Diffuser Round	X	
547871	20" Step Down Concentric Diffuser Round	X	
547872	Horizontal Supply & Return Kit	X	
547873	Hooded Hail Guard	X	
547848	CO2 Sensor - 4-9v dc	X	
547874	0-35% Manual Outside Air Damper	X	X
547878	18" x 28" Supply & Return Transition		X
547879	18" x 28" Flush Mount Concentric Diffuser		X
547880	18" x 28" Step Down Concentric Diffuser		X
547881	Horizontal Supply & Return Kit		X
547882	Hooded Hail Guard		X
917159	Thermostat-2 stage Heat/Cool		X
917163	Low Ambient Kit	X	X
917454	Bottom Power Entry Kit	X	X
917423	H5HK009Q-01 9KW, 208/240V, 3Ø	X	X
917424	H5HK018Q-11 18KW, 208/240V, 3Ø	X	X
917425	H5HK035Q-22 35KW, 208/240V, 3Ø	X	X
917426	H5HK018S-01 18KW, 480V, 3Ø	X	X
917427	H5HK035S-01 35KW, 480V, 3Ø	X	X



St. Louis, MO

NORDYNE

902A-1200 (Replaces 902A-0800)

Before purchasing this appliance, read important energy cost and efficiency information available from your retailer. Specifications and illustrations subject to change without notice and without incurring obligations. Printed in U.S.A.