

INSTALLATION & OPERATING INSTRUCTIONS

**For Use With Models:
(AWB) VERTICAL WALL
MOUNT AIR HANDLERS**

All information contained herein is subject to change without notice.

I0-233A

Goodman Manufacturing Company, L.P.
2550 North Loop West, Suite 400, Houston, TX 77092
www.goodmanmfg.com

© 2004 Goodman Manufacturing Company, L.P.

08/04

INDEX

Introduction	2
Before Beginning Installation	2
Replacement Parts	2
Safety Instructions	2
Small Chassis Installation	3
Large Chassis Installation	3
Installation Diagram	3
Special Instructions	4

INTRODUCTION

CHECKING PRODUCT RECEIVED

Upon receiving the unit, inspect it for damage from shipment. Claims for damage, either shipping or concealed, should be filed immediately with the shipping company. Check the unit model number, specifications, electrical characteristics and accessories to determine if they are correct. In the event an incorrect unit is shipped, it must be returned to the supplier and must NOT be installed. The manufacturer assumes no responsibility for installation of incorrectly shipped units.

BEFORE BEGINNING INSTALLATION

Carefully read all instructions for the installation prior to installing unit. Make sure each step or procedure is understood and any special considerations are taken into account before starting installation. Assemble all tools, hardware and supplies needed to complete the installation. Some items may need to be purchased locally. Make sure everything needed to install air handler is on hand before starting. After deciding where to install unit, closely look the location over - both the inside and outside of home. Note any potential obstacles or problems that might be encountered as noted in this manual. Choose a more suitable location if necessary.

REPLACEMENT PARTS

ORDERING PARTS

When reporting shortages or damages, or ordering repair parts, give the complete unit model and serial numbers as stamped on the unit's nameplate. Replacement parts for this appliance are available through your contractor or local distributor. For the location of your nearest distributor consult the white business pages, the yellow page section of the local telephone book or contact:

SERVICE PARTS DEPARTMENT
GOODMAN MANUFACTURING COMPANY, L.P.
2550 NORTH LOOP WEST, SUITE 400
HOUSTON, TEXAS 77092
(713) 861 - 2500

IMPORTANT SAFETY INSTRUCTIONS

Recognize Safety Symbols, Words, and Labels

The following symbols and labels are used throughout this manual to indicate immediate or potential hazards. It is the owner's responsibility to read and comply with all safety information and instructions accompanying these symbols. Failure to heed safety information increases the risk of serious personal injury or death, property damage and/or product damage.

DANGER

IMMEDIATE HAZARDS WHICH **WILL** RESULT IN PROPERTY DAMAGE, PRODUCT DAMAGE, SEVERE PERSONAL INJURY AND/OR DEATH.

WARNING


HAZARDS OR UNSAFE PRACTICES **COULD** RESULT IN PROPERTY DAMAGE, PRODUCT DAMAGE, SEVERE PERSONAL INJURY AND/OR DEATH.


CAUTION

HAZARDS OR UNSAFE PRACTICES WHICH **MAY** RESULT IN PROPERTY DAMAGE, PRODUCT DAMAGE, AND/OR PERSONAL INJURY.

THE UNITED STATES ENVIRONMENTAL PROTECTION AGENCY ("EPA") HAS ISSUED VARIOUS REGULATIONS REGARDING THE INTRODUCTION AND DISPOSAL OF REFRIGERANTS. FAILURE TO FOLLOW REGULATIONS MAY HARM THE ENVIRONMENT AND CAN LEAD TO THE IMPOSITION OF SUBSTANTIAL FINES. BECAUSE THESE REGULATIONS MAY VARY DUE TO THE PASSAGE OF NEW LAWS, WE SUGGEST THAT ANY WORK ON THIS UNIT BE DONE BY A CERTIFIED TECHNICIAN. SHOULD YOU HAVE ANY QUESTIONS, PLEASE CONTACT THE LOCAL OFFICE OF THE EPA.

THIS PRODUCT IS DESIGNED AND MANUFACTURED TO PERMIT INSTALLATION IN ACCORDANCE WITH NATIONAL CODES. IT IS THE INSTALLER'S RESPONSIBILITY TO INSTALL THIS EQUIPMENT IN ACCORDANCE WITH NATIONAL CODES AND/OR PREVAILING LOCAL CODES AND REGULATIONS. THE MANUFACTURER ASSUMES NO RESPONSIBILITY FOR EQUIPMENT INSTALLED IN VIOLATION OF ANY CODE OR REGULATION.

 **DANGER**
RELIGIO



CARBON MONOXIDE POISONING HAZARD

Special Warning for Installation of Furnace or Air Handling Units in Enclosed Areas such as Garages, Utility Rooms or Parking Areas

Carbon monoxide producing devices (such as an automobile, space heater, gas water heater, etc.) should not be operated in enclosed areas such as unventilated garages, utility rooms or parking areas because of the danger of carbon monoxide (CO) poisoning resulting from the exhaust emissions. If a furnace or air handler is installed in an enclosed area such as a garage, utility room or parking area and a carbon monoxide producing device is operated therein, there must be adequate, direct outside ventilation.

This ventilation is necessary to avoid the danger of CO poisoning which can occur if a carbon monoxide producing device continues to operate in the enclosed area. Carbon monoxide emissions can be recirculated throughout the structure if the furnace or air handler is operating in any mode.

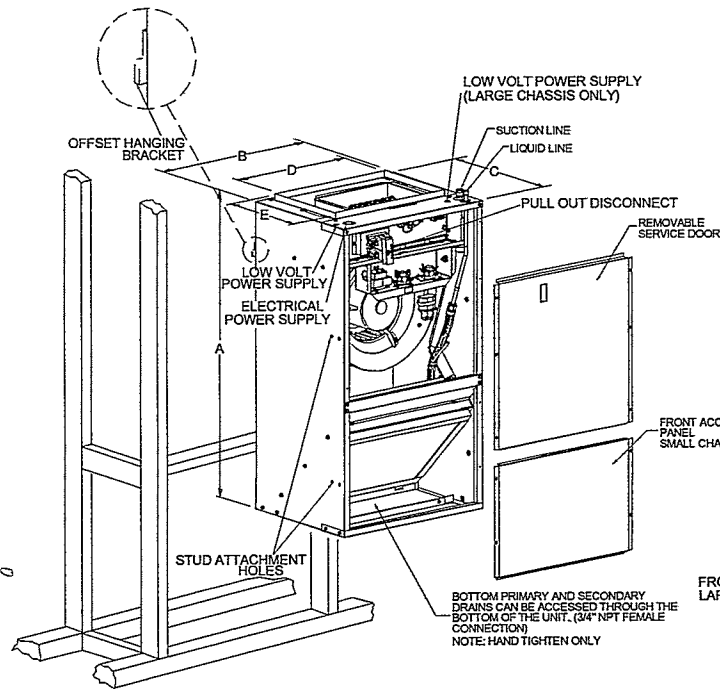
CO can cause serious illness including permanent brain damage or death.

B10259-216

SMALL CHASSIS INSTALLATION

Units are designed to be installed either recessed into a wall or hanging in a vertical "upflow" position. If units are recessed in a wall, holes to attach units to the framing studs are provided along the inside of the front flange. Airhandlers are provided with an offset hanging bracket attached to the rear of the cabinet for hanging applications. Units have a bottom or front return. Discard drain access panel in bottom of unit if installed in a bottom return application. If installed in a front return application, front access panel with insulation should be removed and discarded. A filter rack with filter is provided. Inspect and clean or replace filter monthly. Units are equipped with bottom primary and secondary drains and both drains must be trapped. Failure to install a trap could result in condensation overflowing the drain pan resulting in substantial water damage to the nearby area.

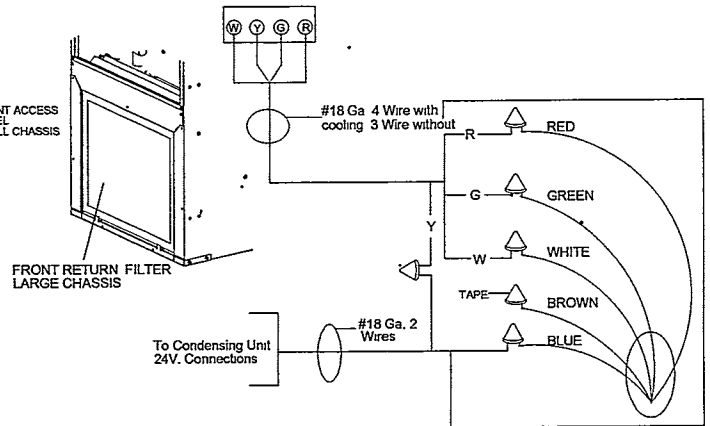
NOTE: If you intend to install this unit with a "Wad" door it must be mounted flush or behind front edge of stud.



LARGE CHASSIS INSTALLATION

Units are designed to be installed either recessed into a wall or hanging in a vertical "upflow" position. If units are recessed in a wall, holes to attach units to the framing studs are provided along the inside of the front flange. Airhandlers are provided with an offset hanging bracket attached to the rear of the cabinet for hanging applications. Units should be installed as front return only. A filter rack with filter is provided. Inspect and clean or replace filter monthly. Units are equipped with bottom primary and secondary drains and both drains must be trapped. Failure to install a trap could result in condensation overflowing the drain pan resulting in substantial water damage to the nearby area.

NOTE: If you intend to install this unit with a "Wad" door it must be mounted flush or behind front edge of stud.



CABINET DIMENSIONS

	LARGE CHASSIS AWB36	SMALL CHASSIS AWB18/24/30
A	36	36
B	24	20 3/16
C	21	16 1/8
D	19 7/8	16
E	15 7/8	11

FURNACE MODEL	THERMOSTAT HEAT ANTICIPATOR SETTING
AWBXX	.2

SPECIAL INSTRUCTIONS

This indoor coil contains the flowrator distributor assembly, which consists of a nut, distributor body, copper tube feeding the coil, and the internal flow check piston.

It is essential that the indoor and outdoor sections be properly matched. When matching the indoor coil with other than the matching outdoor section, the flow check piston in the indoor section must be changed to match the outdoor section to obtain rated performance as specified in our sales specification sheets. See piston kit chart supplied with unit for proper piston size matching.



WARNING

THE EVAPORATOR COIL IS SHIPPED FROM THE FACTORY WITH 90PSI TRACER GAS CHARGE.

A piston size that is too small will cause starving and one that is too large will cause flooding.

- If a combination is used that requires a piston size change, change the piston in the distributor on the indoor coil before installing the coil and charging the system. Follow the procedure listed below.

- Using a 13/16" open-end wrench-(While holding the distributor with a 3/4" open-end wrench.) remove the nut.
- Using the wire provided with the replacement piston(s), run wire (hooked end) through hole in piston.
- Hook the nose end of piston and remove gently from distributor body.
- Replace piston with one of proper size. Install piston with Teflon seal end of piston in distributor first. Do not force piston into distributor.

NOTE: WITH PISTON IN DISTRIBUTOR, SEAL END SHOULD BE DOWN AND SHOULD NOT BE SEEN LOOKING INTO DISTRIBUTOR. PISTON MUST BE FREE TO ROTATE AND MOVE UP AND DOWN. MAKE SURE PISTON IS FREE TO MOVE IN DISTRIBUTOR BODY.

- Replace 13/16" fitting on distributor body. Torque fitting to 40-45 ft/lb. Do not over tighten. Be sure to hold distributor body with 3/4" open-end wrench to prevent feeder tube damage.
- Install new piston size label over stamped size on outside of distributor body.
- Check fittings for leaks after installation.

Quality Makes the Difference!

All of our systems are designed and manufactured with the same high quality standards regardless of size or efficiency. We have designed these units to significantly reduce the most frequent causes of product failure. They are simple to service and forgiving to operate. We use quality materials and components. Finally, every unit is run tested before it leaves the factory. That's why we know. . . **There's No Better Quality.**

Visit our website at www.goodmanmfg.com for information on:

- Goodman products
- Warranties
- Customer Services
- Parts
- Contractor Programs and Training
- Financing Options