

PRODUCT SPECIFICATIONS

Goodman®

Air Conditioning & Heating

CLQ SERIES 14 SEER

High-Efficiency Split System Air Conditioner

2 to 5 Ton



The CLQ split system air conditioner is designed for ground-level or rooftop mount application.



Standard Features

- High-efficiency Copeland® scroll compressor
- Louvered guard protects coil from damage and adds strength to the unit
- Bottom pan rails elevate the unit above slab
- Quiet-operating top discharge
- Totally enclosed and permanently lubricated 8-pole, 850-RPM PSC condenser motor
- Copper tube/aluminum fin coil
- Brass suction and liquid service valve with sweat connections
- Fully charged for 15' of tubing length
- Factory-installed liquid line filter drier
- Compressor sound blanket
- Contactor with lug connection
- Ground lug connection

Air Handler and Coil Compatibilities

- ARUE, ARPT and AEPT multi-position electric heat air handlers
- MBR/MBE modular blower
- CA, CH and H indoor coils

Cabinet Construction

- Polyester powder paint provides premium durability and improved UV protection
- Heavy-gauge, zinc-clad, G90 galvanized steel
- When properly anchored, meets the 2001 Florida Building Code unit integrity requirements for hurricane-type winds

Accessories

- Standard room thermostat with 1-stage cool/1-stage heat (CHT18-60 or CHSATG)
- Digital room thermostat with 1-stage cool/1-stage heat (CH70TG)
- Outdoor Thermostat (OT18-60)
- Low Ambient Kit (LA-01)



PRODUCT SPECIFICATIONS

Specifications

Model	Service Valve		Type	Approximate Shipping Weight (pounds)
	Liquid	Suction		
CLQ24-1A/-1B	3/8"	3/4"	Sweat	206
CLQ30-1A/-1B	3/8"	3/4"	Sweat	250
CLQ36-1/-1B	3/8"	7/8"	Sweat	260
CLQ42-1/-1B	3/8"	7/8"	Sweat	269
CLQ48-1/-1B	3/8"	7/8"	Sweat	313
CLQ60-1/-1B	3/8"	7/8"	Sweat	337

NOTE: The -*B models are painted in Architectural Gray. All other models are painted in Bahama Beige.

Electrical Data

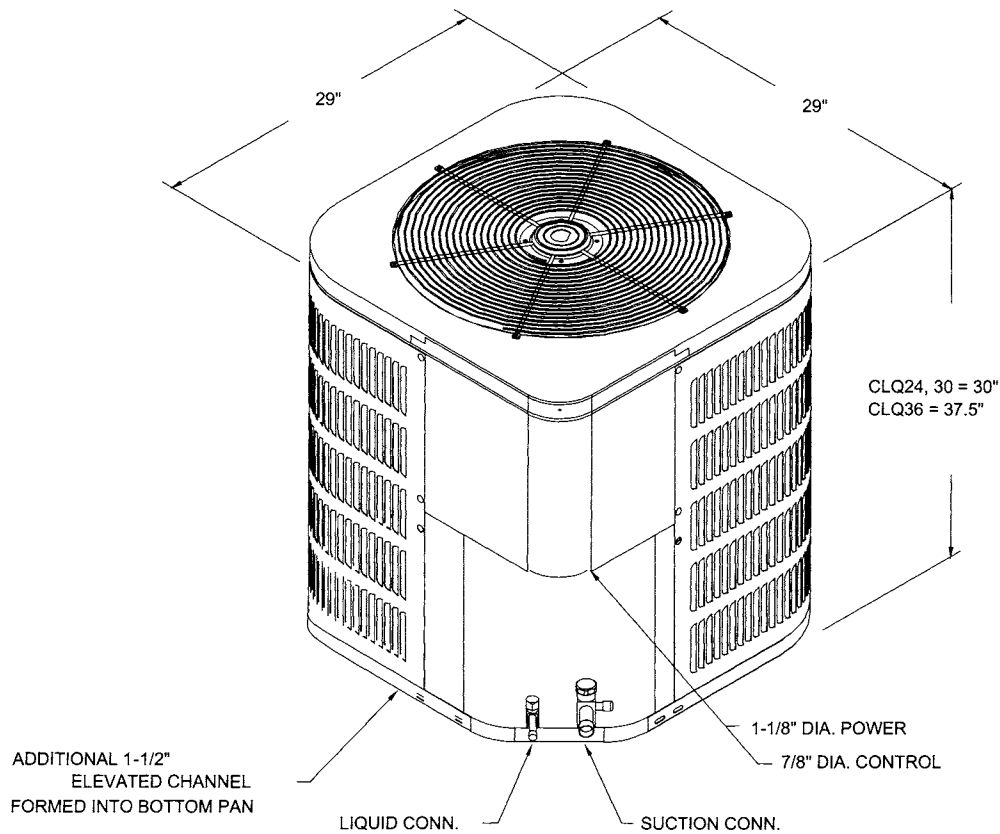
Model	Volts	PH	Minimum Circuit Ampacity ¹	Maximum Overcurrent Protection ²	Maximum Volts	Minimum Volts	Compressor		Condenser Fan	
							RLA	LRA	FLA	HP
CLQ24-1A/-1B	208/230	1	12.9	20	253	197	9.6	45	.9	1/6
CLQ30-1A/-1B	208/230	1	17.9	30	253	197	13.6	63	.9	1/6
CLQ36-1/-1B	208/230	1	18.5	30	253	197	13.5	72.5	1.6	1/4
CLQ42-1/-1B	208/230	1	24.0	40	253	197	17.9	88.0	1.6	1/4
CLQ48-1/-1B	208/230	1	24.1	40	253	197	18.0	104.0	1.6	1/4
CLQ60-1/-1B	208/230	1	29.2	50	253	197	22.1	137.0	1.6	1/4

- 1) Wire size should be determined in accordance with National Electrical Codes. Extensive wire runs will require larger wire sizes.
- 2) May use fuses or HACR type Circuit Breakers of the same size as noted.

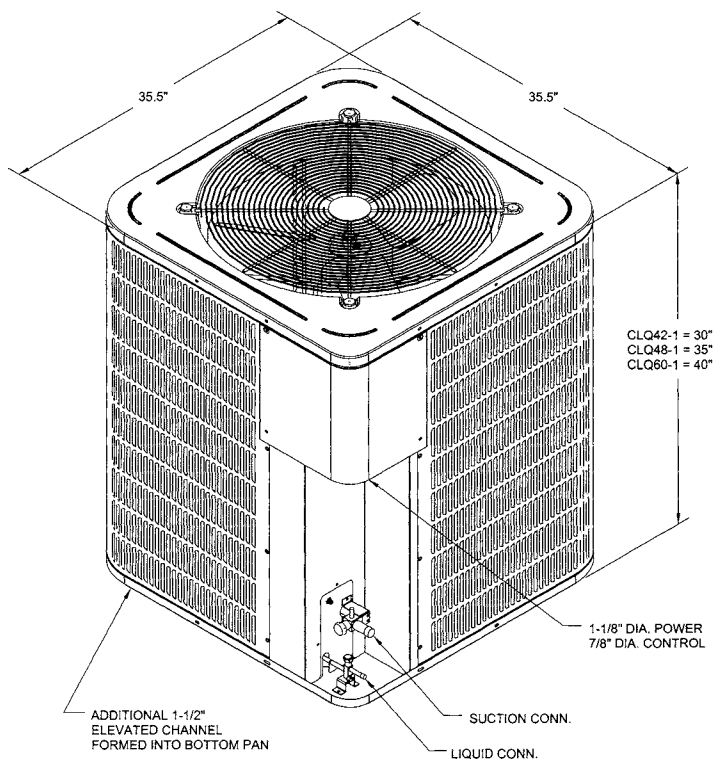
PRODUCT SPECIFICATIONS

Dimensions

CLQ24-36 Models



CLQ42-60 Models



PRODUCT SPECIFICATIONS

Performance Ratings

Condenser	Evaporator Model	Total BTUH	Sensible BUH	SEER	EER	ARI Ref. #	Decibels	
CLQ24-1/-1B	AEPT030-00A-1	23,000	17,200	15.0	13.8	503616	74	
	ARPT032-00A-1	22,000	16,300	13.5	12.5	503617	74	
	ARPT042-00A-1	22,400	16,500	14.0	13.0	503618	74	
	ARUF032-00A-1	22,000	16,300	13.5	12.5	503619	74	
	ARUF042-00A-1	22,400	16,500	14.0	13.0	503620	74	
	CA*F030*2*+EEP	21,000	15,600	13.5	12.5	503621	74	
	CA*F030*2*+G*V90453B**	22,000	16,300	14.5	13.5	503622	74	
	CA*F030*2*+GMV80703BXA	22,000	16,300	14.5	13.5	520966	74	
	CA*F048*2*+EEP	22,000	16,300	14.0	13.0	503624	74	
	CA*F048*2*+G*V90704C**	23,000	17,200	15.0	13.8	503625	74	
	CA*F048*2*+GMV80905CXA	23,000	17,000	15.0	13.8	520963	74	
	CA*X030*2*+EEP	21,000	15,600	13.5	12.5	503626	74	
	CA*X030*2*+G*V90453B**	22,000	16,300	14.5	13.5	503627	74	
	CA*X030*2*+GMV80703BXA	22,000	16,300	14.5	13.5	520972	74	
	CA*X042*2*+G*V90704C**	23,000	17,200	15.0	13.8	503628	74	
	CA*X060*2*+EEP	22,000	16,300	14.0	13.0	503629	74	
	CHPF030A2*+EEP	21,000	15,600	13.5	12.5	503630	74	
	CHPF030A2*+G*V90453B**	22,000	16,300	14.5	13.5	503631	74	
	CHPF030A2*+GMV80703BXA	22,000	16,300	14.5	13.5	520976	74	
	CHPF048D2*+EEP	22,000	16,300	14.0	13.0	503633	74	
	CHPF048D2*+G*V90704C**	23,000	17,200	15.0	13.8	503634	74	
	CHPF048D2*+GMV80905CXA	23,000	17,000	15.0	13.8	520957	74	
	CHPF048D2*+GMV80905CXA	23,000	17,000	15.0	13.8	520951	74	
	CHPX030A2*+EEP	21,000	15,600	13.5	12.5	503635	74	
	CHPX030A2*+G*V90453B**	22,000	16,300	14.5	13.5	503636	74	
	CHPX030A2*+GMV80703BXA	22,000	16,300	14.5	13.5	520961	74	
	CHPX048D2*+EEP	22,000	16,300	14.0	13.0	503637	74	
	CHPX048D2*+G*V90704C**	23,000	17,200	15.0	13.8	503638	74	
	H36F+EEP	22,000	16,300	13.5	12.5	503639	74	
	H49F+EEP	23,000	17,200	14.0	13.0	503641	74	
	CLQ30-1/-1B	AEPT030-00A-1	27,000	19,950	14.5	13.5	503650	74
		AEPT036-00A-1	29,000	21,460	15.0	13.8	503651	74
ARPT032-00A-1		27,000	19,950	13.5	12.5	503652	74	
ARUF032-00A-1		27,000	19,950	13.5	12.5	503653	74	
CA*F030*2*+EEP		27,000	19,950	13.5	12.5	503654	74	
CA*F042*2*+G*V90704C**		27,000	19,950	14.5	13.5	503656	74	
CA*F042*2*+GMV80703BXA		27,000	19,950	14.5	13.5	520980	74	
CA*F061*2*+EEP		29,000	21,460	14.0	13.0	503657	74	
CA*F061*2*+G*V90905D**		29,000	21,460	15.0	13.8	503658	74	
CA*F061*2*+GMV80905CXA		29,000	21,460	15.0	13.8	520979	74	
CA*X030*2*+EEP		27,000	19,950	13.5	12.5	503660	74	
CA*X042*2*+G*V90704C**		27,000	19,950	14.5	13.5	503661	74	
CA*X061*2*+EEP		29,000	21,460	14.0	13.0	503662	74	
CA*X061*2*+G*V90905D**		29,000	21,460	15.0	13.8	503663	74	
CHPF030A2*+EEP		27,000	19,950	13.5	12.5	503664	74	
CHPF042B2*+G*V90704C**		27,000	19,950	14.5	13.5	503665	74	
CHPF042B2*+GMV80703BXA		27,000	19,950	14.5	13.5	520982	74	
CHPF060D2*+EEP		29,000	21,460	14.0	13.0	503666	74	
CHPF060D2*+G*V90905D**		29,000	21,460	15.0	13.8	503667	74	
CHPF060D2*+GMV80905CXA		29,000	21,460	15.0	13.8	520984	74	
CHPX030A2*+EEP		27,000	19,950	13.5	12.5	503669	74	
CHPX042B2*+G*V90704C**		27,000	19,950	14.5	13.5	506813	74	
CHPX042B2*+G*V90704CXA		27,000	19,950	14.5	13.5	503670	74	
CHPX042B2*+GMV80703BXA		27,000	19,950	14.5	13.5	503670	74	
CHPX060D2*+EEP		29,000	21,460	14.0	13.0	503671	74	
CHPX060D2*+G*V90905D**		29,000	21,460	15.0	13.8	503672	74	
CHPX060D2*+GMV80905CXA		29,000	21,460	15.0	13.8	521012	74	
H36F+EEP		27,000	19,950	13.5	12.5	503673	74	
H61F+EEP		29,000	21,460	14.0	13.0	503675	74	

- 1) Seasonal Energy Efficiency Ratio
 - 2) Energy Efficiency Ratio @ 80 °F/67 °F Inside - 95 °F
 - 3) When matching the outdoor unit to the indoor unit, use the piston supplied with the outdoor unit or what is specified on the piston kit chart supplied with the indoor unit.
 - 4) XX of a model designates Electric Heat Quantity.
 - 5) EEP - Order from Service Dept. Part No. B13707-38 or new Solid State Board B13707-35S. Part No. B13707-38 is not interchangeable with B13707-35S.
- The Goodman Gas Furnace contains the EEP cooling time delay.

PRODUCT SPECIFICATIONS

Performance Ratings (cont.)

Condenser	Evaporator Model	Total BTUH	Sensible BUH	SEER	EER	ARI Ref. #	Decibels
CLQ36-1/-1B	AEPT036-00A-1	35,000	25,000	15.0	13.8	503687	74
	ARPT049-00A-1	34,400	24,500	13.5	12.5	503688	74
	ARUF049-00A-1	34,400	24,500	13.5	12.5	503689	74
	CA*F060*2*+EEP	33,400	24,500	13.5	12.5	503690	74
	CA*F060*2*+G*V90905D**	34,400	24,500	14.5	13.5	503691	74
	CA*F060*2*+GMV80905CXA	34,400	24,500	14.5	13.5	521006	74
	CA*F061*2*+EEP	35,000	25,000	14.0	13.0	503693	74
	CA*F061*2*+GMV81155CXA	35,000	25,000	15.0	13.8	521015	74
	CA*X060*2*+EEP	33,400	24,500	13.5	12.5	503695	74
	CA*X060*2*+G*V90905D**	34,400	24,500	14.5	13.5	503696	74
	CA*X060*2*+GMV80905CXA	34,400	24,500	14.5	13.5	520997	74
	CA*X061*2*+EEP	35,000	25,000	14.0	13.0	503697	74
	CA*X061*2*+G*V91155D**	35,000	25,000	15.0	13.8	503698	74
	CA*X061*2*+GMV81155CXA	35,000	25,000	15.0	13.8	521003	74
	CHPF048D2*+EEP	33,400	24,500	13.5	12.5	503699	74
	CHPF048D2*+G*V90905D**	34,400	24,500	14.5	13.5	503700	74
	CHPF048D2*+GMV80905CXA	34,400	24,500	14.5	13.5	520995	74
	CHPF060D2*+EEP	35,000	25,000	14.0	13.0	503702	74
	CHPF060D2*+G*V91155D**	35,000	25,000	15.0	13.8	503703	74
	CHPF060D2*+GMV81155CXA	35,000	25,000	15.0	13.8	520986	74
	CHPX048D2*+EEP	33,400	24,500	13.5	12.5	503705	74
	CHPX048D2*+G*V90905D**	34,400	24,500	14.5	13.5	503706	74
	CHPX048D2*+GMV80905CXA	34,400	24,500	14.5	13.5	520992	74
	CHPX060D2*+EEP	35,000	25,000	14.0	13.0	503707	74
	CHPX060D2*+G*V91155D**	35,000	25,000	15.0	13.8	503708	74
	CHPX060D2*+GMV81155CXA	35,000	25,000	15.0	13.8	520987	74
H60F+EEP	34,400	24,500	13.5	12.5	503709	74	
H61F+EEP	36,000	26,660	14.0	13.0	503711	74	
CLQ42-1/-1B	AEPT060-00A-1	41,000	31,000	15.0	13.8	503723	76
	ARPT049-00A-1	40,000	30,000	13.5	12.5	503724	76
	ARUF049-00A-1	40,000	30,000	13.5	12.5	503725	76
	CA*F060*2*+EEP	40,000	30,000	13.5	12.5	503726	76
	CA*F060*2*+G*V90905D**	40,000	30,000	14.5	13.5	503727	76
	CA*F060*2*+GMV80905CXA	40,000	30,000	14.5	13.5	521005	76
	CA*F061*2*+EEP	41,000	31,000	14.0	13.0	503729	76
	CA*F061*2*+G*V91155D**	41,000	31,000	15.0	13.8	503730	76
	CA*F061*2*+GMV81155CXA	41,000	31,000	15.0	13.8	520988	76
	CA*X060*2*+EEP	40,000	30,000	13.5	12.5	503732	76
	CA*X060*2*+G*V90905D**	40,000	30,000	14.5	13.5	503733	76
	CA*X060*2*+GMV80905CXA	40,000	30,000	14.5	13.5	520989	76
	CA*X061*2*+EEP	41,000	31,000	14.0	13.0	503734	76
	CA*X061*2*+G*V91155D**	41,000	31,000	15.0	13.8	503735	76
	CA*X061*2*+GMV81155CXA	41,000	31,000	15.0	13.8	521008	76
	CHPF048D2*+EEP	40,000	30,000	13.5	12.5	503736	76
	CHPF048D2*+G*V90905D**	40,000	30,000	14.5	13.5	503737	76
	CHPF048D2*+GMV80905CXA	40,000	30,000	14.5	13.5	521010	76
	CHPF060D2*+EEP	41,000	31,000	14.0	13.0	503739	76
	CHPF060D2*+G*V91155D**	41,000	31,000	15.0	13.8	503740	76
	CHPF060D2*+GMV81155CXA	41,000	31,000	15.0	13.8	521007	76
	CHPX048D2*+EEP	40,000	30,000	13.5	12.5	503742	76
	CHPX048D2*+G*V90905D**	40,000	30,000	14.5	13.5	503743	76
	CHPX048D2*+GMV80905CXA	40,000	30,000	14.5	13.5	520991	76
	CHPX060D2*+EEP	41,000	31,000	14.0	13.0	503744	76
	CHPX060D2*+G*V91155D**	41,000	31,000	15.0	13.8	503745	76
CHPX060D2*+GMV81155CXA	41,000	31,000	15.0	13.8	520994	76	
H60F+EEP	40,000	30,000	13.5	12.5	503746	76	
H61F+EEP	41,000	31,000	14.0	13.0	503748	76	

1) Seasonal Energy Efficiency Ratio

2) Energy Efficiency Ratio @ 80 °F/67 °F Inside - 95 °F

3) When matching the outdoor unit to the indoor unit, use the piston supplied with the outdoor unit or what is specified on the piston kit chart supplied with the indoor unit.

4) XX of a model designates Electric Heat Quantity.

5) EEP - Order from Service Dept. Part No. B13707-38 or new Solid State Board B13707-35S. Part No. B13707-38 is not interchangeable with B13707-35S.

The Goodman Gas Furnace contains the EEP cooling time delay.

PRODUCT SPECIFICATIONS

Performance Ratings (cont.)

Condenser	Evaporator Model	Total BTUH	Sensible BUH	SEER	EER	ARI Ref. #	Decibels
CLQ48-1/-1B	AEPT060-00A-1	45,000	34,000	14.5	13.8	503760	76
	ARPT049-00A-1	44,000	33,000	13.5	12.5	503761	76
	ARUF049-00A-1	44,000	33,000	13.5	12.5	503762	76
	CA*F060*2*+EEP	44,000	33,000	13.5	12.5	503763	76
	CA*F060*2*+G*V90905D**	44,000	33,000	14.0	13.0	503764	76
	CA*F060*2*+GMV80905CXA	44,000	33,000	14.0	13.0	521002	76
	CA*F061*2*+EEP	45,000	34,000	14.0	13.0	503766	76
	CA*F061*2*+G*V91155D**	45,000	34,000	14.5	13.5	503767	76
	CA*F061*2*+GMV81155CXA	45,000	34,000	14.5	13.5	520990	76
	CA*X060*2*+EEP	44,000	33,000	13.5	12.5	503769	76
	CA*X060*2*+G*V90905D**	44,000	33,000	14.0	13.0	503770	76
	CA*X060*2*+GMV80905CXA	44,000	33,000	14.0	13.0	520999	76
	CA*X061*2*+EEP	45,000	34,000	14.0	13.0	503771	76
	CA*X061*2*+G*V91155D**	45,000	34,000	14.5	13.5	503772	76
	CA*X061*2*+GMV81155CXA	45,000	34,000	14.5	13.5	521017	76
	CHPF048D2*+EEP	44,000	33,000	13.5	12.5	503773	76
	CHPF048D2*+G*V90905D**	44,000	33,000	14.0	13.0	503774	76
	CHPF048D2*+GMV80905CXA	44,000	33,000	14.0	13.0	520996	76
	CHPF060D2*+EEP	45,000	34,000	14.0	13.0	503776	76
	CHPF060D2*+G*V91155D**	45,000	34,000	14.5	13.5	503777	76
	CHPF060D2*+GMV81155CXA	45,000	34,000	14.5	13.5	520998	76
	CHPX048D2*+EEP	44,000	33,000	13.5	12.5	503779	76
	CHPX048D2*+G*V90905D**	44,000	33,000	14.0	13.0	503780	76
	CHPX048D2*+GMV80905CXA	44,000	33,000	14.0	13.0	521011	76
	CHPX060D2*+EEP	45,000	34,000	14.0	13.0	503781	76
	CHPX060D2*+G*V91155D**	45,000	34,000	14.5	13.5	503782	76
CHPX060D2*+GMV81155CXA	45,000	34,000	14.5	13.5	521016	76	
H60F+EEP	44,000	33,000	13.5	12.5	503783	76	
H61F+EEP	45,000	34,000	14.0	13.0	503785	76	
CLQ60-1/-1B	AEPT060-00A-1	55,000	39,600	14.0	13.0	503797	76
	ARPT061-00A-1	55,000	39,600	13.5	12.5	503798	76
	ARUF061-00A-1	55,000	39,600	13.5	12.5	503799	76
	CA*F061*2*+EEP	55,000	39,600	13.5	12.5	503800	76
	CA*F061*2*+GMV80905CXA	55,000	39,600	14.3	13.3	521009	76
	CA*F061*2*+GMV81155CXA	55,000	39,600	14.3	13.3	521013	76
	CA*X060*2*+EEP	54,000	38,800	13.5	12.0	503802	76
	CA*X061*2*+EEP	55,000	39,600	14.0	12.5	503803	76
	CA*X061*2*+G*V91155D**	55,000	39,600	14.2	13.1	503804	76
	CA*X061*2*+GMV80905CXA	55,000	39,600	14.3	13.3	520993	76
	CA*X061*2*+GMV81155CXA	55,000	39,600	14.3	13.3	520985	76
	CHPF048D2*+EEP	54,000	38,800	13.5	12.0	503805	76
	CHPF060D2*+EEP	55,000	39,600	14.0	12.5	503806	76
	CHPF060D2*+GMV80905CXA	55,000	39,600	14.3	13.3	521004	76
	CHPF060D2*+GMV81155CXA	55,000	39,600	14.3	13.3	521014	76
	CHPX060D2*+EEP	54,000	38,800	13.5	12.0	503808	76
	CHPX060D2*+G*V91155D**	55,000	39,600	14.2	13.1	503809	76
	CHPX060D2*+GMV80905CXA	55,000	39,600	14.3	13.3	521000	76
	CHPX060D2*+GMV81155CXA	55,000	39,600	14.3	13.3	521001	76
	H60F+EEP	54,000	38,800	13.5	12.5	503810	76
H61F+EEP	55,000	39,600	14.0	13.0	503811	76	

- 1) Seasonal Energy Efficiency Ratio
 - 2) Energy Efficiency Ratio @ 80 °F/67 °F Inside - 95 °F
 - 3) When matching the outdoor unit to the indoor unit, use the piston supplied with the outdoor unit or what is specified on the piston kit chart supplied with the indoor unit.
 - 4) XX of a model designates Electric Heat Quantity.
 - 5) EEP - Order from Service Dept. Part No. B13707-38 or new Solid State Board B13707-35S. Part No. B13707-38 is not interchangeable with B13707-35S.
- The Goodman Gas Furnace contains the EEP cooling time delay.

PRODUCT SPECIFICATIONS

This page has been intentionally left blank.

PRODUCT SPECIFICATIONS



Goodman Manufacturing Company, L.P., reserves the right to discontinue, or change at any time, specifications or designs without notice or without incurring obligations.
Copyright © 2004 Goodman Manufacturing Company, L.P. • Houston, Texas • Printed in the USA. • Goodman[®] brand products are made proudly in the USA.