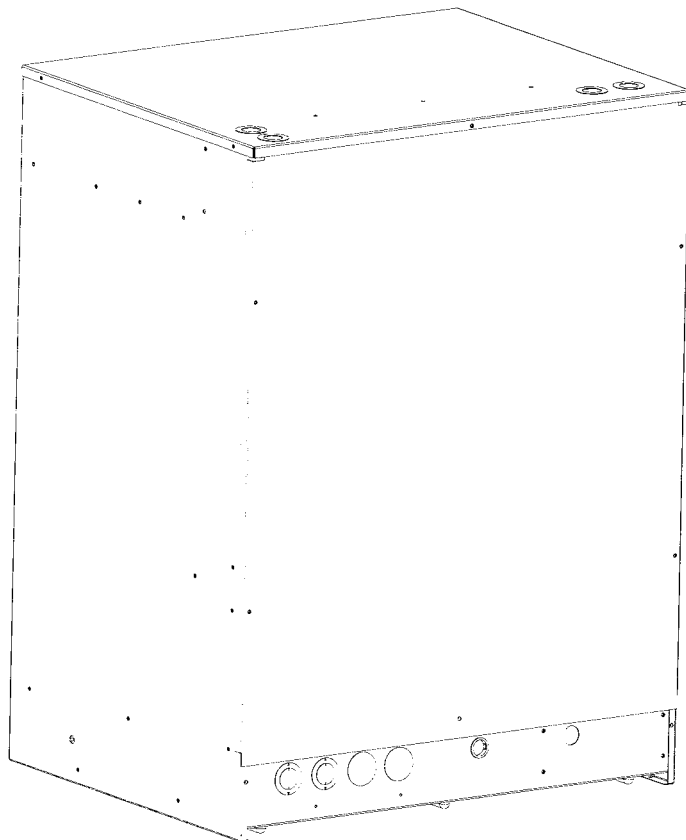


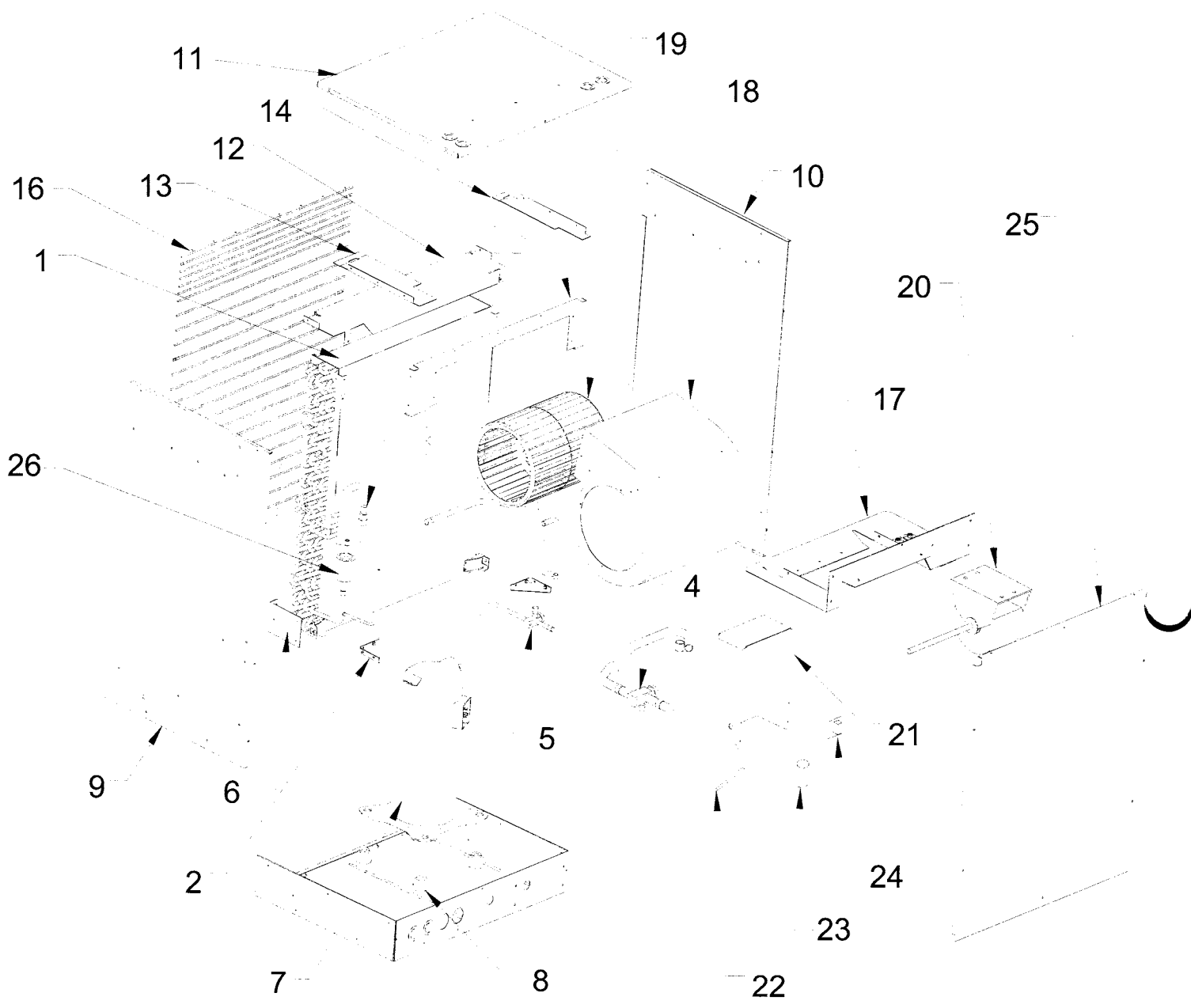


REPAIR PARTS

Model: TWC Series
Unit: Through the Wall Condenser



Goodman Manufacturing Company, L.P.
2550 North Loop West, Suite 400
Houston, Texas 77092
www.goodmanmfg.com



REPAIR PARTS LIST

Model: TWC Series

Unit: Through the Wall Condenser

Ref No.	Part Number	Description
---------	-------------	-------------

			TWC18-1	TWC24-1	TWC24-1 REV. A	TWCR30-1	TWC18-1 REV. A	TWC24-1 REV. B	TWCR30-1 REV. A
1	CRK-01	Kit, Condenser Replacement		1	1	1			
	CRK-02	Kit, Condenser Replacement	1				1		
2	3900901H	Brkt., Lower Coil Mtg.	2	2	2	2	2	2	2
3	BT1360700	Switch, Low Pressure	1	1	1	1	n/a	n/a	n/a
4	B1282566	3/4" Service Valve	1	1	1	1	1	1	1
5	B1282571	3/8" Service Valve	1	1	1	1	1	1	1
6	3900900H	Brkt., Service Valve	1	1	1	1	1	1	1
7	B9266874	Compressor, Bristol	1				1		
	COMPRPL002	Kit, Goldstar compressor		1					
	B9266395	Compressor, Copeland (ZR24)			1			1	
	B9266394	Compressor, Copeland (ZR26)				1			1
8	B1339530	Grommet, Compressor	4	4	4	4	4	4	4
9	3902001PH	Wrapper, Left Side	1	1	1	1	1	1	1
10	3902002PH	Wrapper, Right Side	1	1	1	1	1	1	1
11	3902000PH	Wrapper, Top	1	1	1	1	1	1	1
12	3901005H	Rear, Blower Deck	1	1	1	1	1	1	1
13	3901004H	Left, Blower Deck	1	1	1	1	1	1	1
14	3901003H	Right, Blower Deck	1	1	1	1	1	1	1
15	3901002H	Front, Blower Deck	1	1	1	1	1	1	1
16	BT3975200	Grill, Wire	1	1	1	1	1	1	1
17	3901201H	Motor Deck	1	1	1	1	1	1	1
18	BT3939400	Blower Housing	1	1	1	1	1	1	1
19	BT1368018	Blower Wheel 10x8	1	1	1	1	1	1	1
20	BT1340032	Motor, 1/4 HP	1	1	1	1	1	1	1
21	3900800H	Box, Control	1	1	1	1	1	1	1
22	3084801	Strap, Capacitor	1	1	1	1	1	1	1
23	B94578700	Capacitor, 30/5/370	1				1		
	BT9450016	Capacitor, 40/5/440		1					
	B94575300	Capacitor, 35/5/370			1			1	
	B94575500	Capacitor, 40/5/370				1			1
24	B1360300	Contacto	1	1	1	1	1	1	1
25	3901500PH	Front Panel	1	1	1	1	1	1	1
26	B1219212	Drier, Filter	1	1	1	1	1	1	1
27	B260S8291	Spray paint, (Bahama Beige)							