

CLJ SERIES 12 SEER

Split System Air Conditioner

1½ to 5 Ton



The CLJ split system air conditioner is designed for ground-level or rooftop mount application.



Standard Features

- Hermetically sealed compressor with internal high-pressure relief
- Louvered guard protects coil from damage and adds strength to unit
- Bottom pan rails elevate unit above slab
- Quiet operating top discharge
- Totally enclosed and permanently lubricated condenser motor
- Copper tube/aluminum fin coil
- Brass suction and liquid service valve with sweat connections
- Fully charged for 15' of tubing length
- Factory-installed liquid line filter drier
- Contactor with lug connections
- Ground lug connection

Air Handler and Coil Compatibilities

- ARPT, ARUF and AEPT multi-position electric heat air handlers
- ARPF dedicated downflow electric heat air handler
- AWB vertical wall-mounted electric heat air handler
- AC ceiling-mounted electric heat air handler
- AH vertical wall-mounted hydronic heat air handler
- ACHP ceiling-mounted hydronic heat air handler
- MBR/MBE modular blower
- CA, CH and H indoor coils

Cabinet Construction

- Polyester powder paint provides premium durability and improved UV protection
- Heavy-gauge, zinc-clad, G90 galvanized steel
- When properly anchored, meets the 2001 Florida Building Code unit integrity requirements for hurricane-type winds

Accessories

- Standard room thermostat with 1-stage cool/1-stage heat (CHT18-60 or CHSATG)
- Digital room thermostat with 1-stage cool/1-stage heat (CH70TG)
- Outdoor Thermostat (OT18-60)
- Low Ambient Kit (LA-01)



PRODUCT SPECIFICATIONS

Specifications

Model	Service Valve		Type	Approximate Shipping Weight (pounds)
	Liquid	Suction		
CLJ18-1A/-1C	3/8"	3/4"	Sweat	135
CLJ24-1A/-1C	3/8"	3/4"	Sweat	160
CLJ30-1A/-1C	3/8"	3/4"	Sweat	173
CLJ36-1A/-1C	3/8"	3/4"	Sweat	174
CLJ42-1B/-1C	3/8"	7/8"	Sweat	175
CLJ48-1A/-1C	3/8"	7/8"	Sweat	208
CLJ60-1/-1C	3/8"	7/8"	Sweat	270
CLJ64-1/-1C	3/8"	7/8"	Sweat	358

NOTE: The -*C models are painted in Architectural Gray. All other models are painted in Bahama Beige.

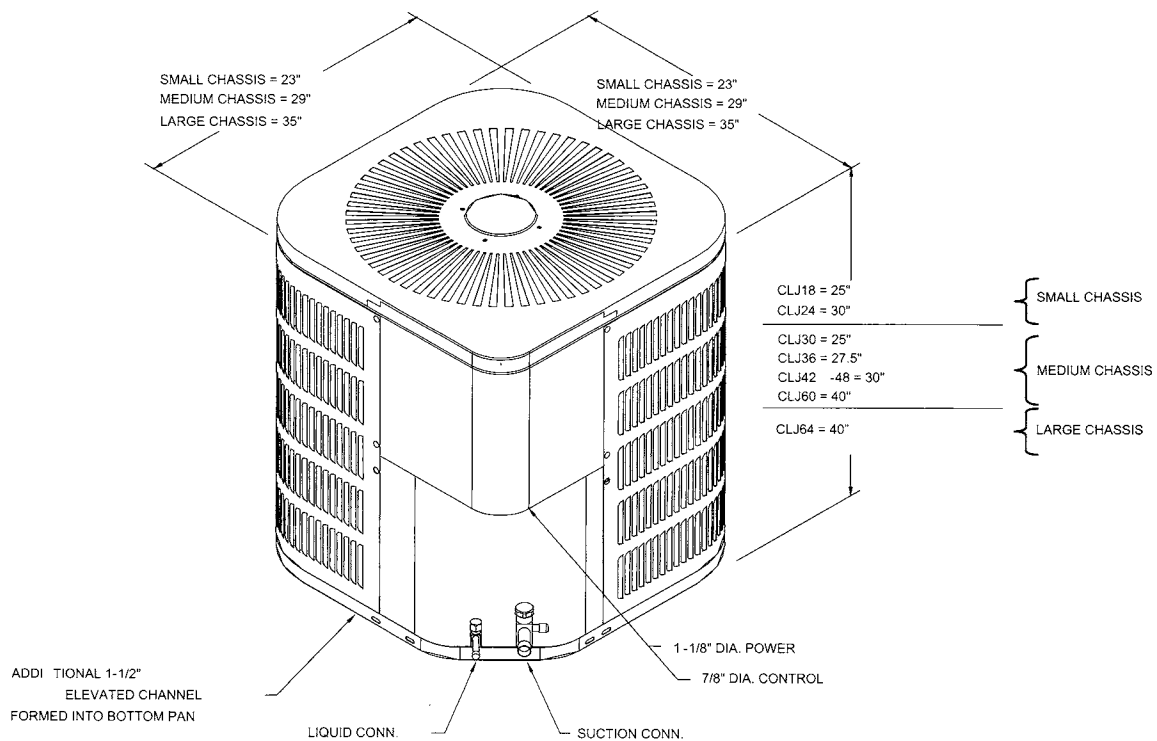
Electrical Data

Model	Volts	PH	Minimum Circuit Ampacity ¹	Maximum Overcurrent Protection ²	Maximum Volts	Minimum Volts	Compressor		Condenser Fan	
							RLA	LRA	FLA	HP
CLJ18-1A	208/230	1	12.1	20	253	197	8.6	49	1.3	1/6
CLJ18-1C	208/230	1	12.1	20	253	197	8.6	49	1.3	1/6
CLJ24-1A	208/230	1	13.1	20	253	197	9.4	49	1.3	1/6
CLJ24-1C	208/230	1	13.1	20	253	197	9.4	49	1.3	1/6
CLJ30-1A	208/230	1	17.2	30	253	197	13.0	60	0.9	1/6
CLJ30-1C	208/230	1	17.4	30	253	197	13.0	60	1.1	1/6
CLJ36-1A/-1C	208/230	1	19.5	30	253	197	14.4	82	1.5	1/4
CLJ42-1B	208/230	1	23.1	40	253	197	17.2	96	1.6	1/4
CLJ42-1C	208/230	1	20.2	30	253	197	14.9	96	1.6	1/4
*CLJ48-1A/-1C	208/230	1	24.7	40	253	197	18.3	109	1.8	1/4
*CLJ60-1/-1C	208/230	1	33.1	60	253	197	25.0	148	1.8	1/4
*CLJ64-1/-1C	208/230	1	37.6	60	253	197	28.8	148	1.6	1/4

* Uses scroll compressor

- 1) Wire size should be determined in accordance with National Electrical Codes. Extensive wire runs will require larger wire sizes.
- 2) May use fuses or HACR type Circuit Breakers of the same size as noted.

Dimensions



PRODUCT SPECIFICATIONS

Performance Ratings

Condenser	Evaporator Model	Total BTUH	Sensible BTUH	SEER	EER	ARI Ref. #	Decibel
CLJ18	AC18-XX	17,200	12,750	12.0	11.0	467428	77
	ACHP1819-1	17,200	12,750	12.0	11.0	467432	77
	AEPT030-00A-1	18,400	13,600	13.0	12.0	467427	77
	AH18	17,000	12,900	11.2	10.2	467430	77
	AH30	17,400	12,600	12.0	11.0	467429	77
	ARPF024-00B-1	16,800	12,400	11.5	10.5	467431	77
	ARPF036-00B-1	18,000	13,200	12.0	11.0	467435	77
	ARPT024-00A-1	16,800	12,400	11.5	10.5	467488	77
	ARPT032-00A-1	18,000	13,200	12.0	11.0	467489	77
	ARUF018-00A-1	16,000	11,800	11.3	10.3	467495	77
	ARUF024-00A-1	16,800	12,400	11.5	10.5	467492	77
	ARUF032-00A-1	18,000	13,200	12.0	11.0	467500	77
	AWB18-XX	16,000	11,800	11.3	10.3	467498	77
	AWB24-XX	17,200	12,750	12.0	11.0	467491	77
	CA*F018*2*+EEP	16,000	11,800	11.3	10.3	503429	77
	CA*F024*2*+EEP	16,800	12,400	11.5	10.5	505285	77
	CA*F030*2*+EEP	18,000	13,200	12.0	11.0	503432	77
	CA*F030*2*+G*V90453B**	18,000	13,200	13.0	12.0	503430	77
	CA*F030*2*+GMV80703BXA	18,000	13,200	13.0	12.0	520819	77
	CA*F042*2*+G*V90704C**	18,000	13,200	13.0	12.0	503433	77
	CA*F042*2*+GMV80703BXA	18,000	13,200	13.0	12.0	520833	77
	CA*X018*2*+EEP	16,000	11,800	11.3	10.3	503434	77
	CA*X030*2*+EEP	18,000	13,200	12.0	11.0	503435	77
	CA*X030*2*+G*V90453B**	18,000	13,200	13.0	12.0	503436	77
	CA*X030*2*+GMV80703BXA	18,000	13,200	13.0	12.0	520831	77
	CA*X042*2*+G*V90704C**	18,000	13,200	13.0	12.0	503437	77
	CA*X042*2*+GMV80703BXA	18,000	13,200	13.0	12.0	520815	77
	CHPF024A2*+EEP	16,800	12,400	11.5	10.5	503438	77
	CHPF030A2*+EEP	18,000	13,200	12.0	11.0	503439	77
	CHPF030A2*+G*V90453B**	18,000	13,200	13.0	12.0	503440	77
	CHPF030A2*+GMV80703BXA	18,000	13,200	13.0	12.0	520822	77
	CHPF042B2*+G*V90704C**	18,000	13,200	13.0	12.0	503442	77
	CHPF042B2*+GMV80703BXA	18,000	13,200	13.0	12.0	520835	77
	CHPX024A2*+EEP	16,800	12,400	11.5	10.5	503443	77
	CHPX030A2*+EEP	18,000	13,200	12.0	11.0	503444	77
	CHPX030A2*+G*V90453B**	18,000	13,200	13.0	12.0	503445	77
	CHPX030A2*+GMV80703BXA	18,000	13,200	13.0	12.0	530817	77
	CHPX042B2*+G*V90704C**	18,000	13,200	13.0	12.0	503446	77
	CHPX042B2*+GMV80703BXA	18,000	13,200	13.0	12.0	520834	77
	H36F+EEP	18,000	13,200	12.0	11.0	467040	77

NOTES:

- 1.) Seasonal Energy Efficiency Ratio
- 2.) Energy Efficiency Ratio @ 80 °F/67 °F Inside - 95 °F
- 3.) When matching the outdoor unit to the indoor unit, use the piston supplied with the outdoor unit or that specified on the piston kit chart supplied with the indoor unit.
- 4.) Note: XX of A Model Designate Electric Heat Quantity.
- 5.) EEP - Order from Service Dept. Part No. B13707-38 or new Solid State Board B13707-35S. Part No. B13707-38 is **not interchangeable** with B13707-35S. The Goodman Gas Furnace contains the EEP cooling time delay.

PRODUCT SPECIFICATIONS

Performance Ratings (cont.)

Condenser	Evaporator Model	Total BTUH	Sensible BTUH	SEER	EER	ARI Ref. #	Decibel
CLJ24	AC24-XX	21,200	15,700	11.5	10.5	467511	73
	AC30-XX	23,200	17,200	12.0	11.0	467521	73
	ACHP2423-1	21,200	15,700	11.5	10.5	467502	73
	ACHP3028-1	22,400	16,600	12.0	11.0	467516	73
	AEPT030-00A-1	24,000	17,700	13.0	12.0	467520	73
	AH30	22,400	16,600	12.0	11.0	467515	73
	ARPF024-00B-1	22,800	16,800	11.3	10.3	467504	73
	ARPF036-00B-1	23,400	17,270	12.0	11.0	467506	73
	ARPT024-00A-1	22,800	16,800	11.3	10.3	467501	73
	ARPT032-00A-1	23,400	17,270	12.0	11.0	467507	73
	ARUF024-00A-1	22,800	16,800	11.3	10.3	467517	73
	ARUF032-00A-1	23,400	17,270	12.0	11.0	467509	73
	AWB24-XX	22,800	16,800	12.0	11.0	467513	73
	AWB30-XX	22,800	16,800	12.0	11.0	467510	73
	CA*F024*2*+EEP	22,600	16,800	11.3	10.3	505284	73
	CA*F030*2*+G*V90453B**	23,400	17,270	13.0	12.0	503447	73
	CA*F030*2*+GMV80703BXA	23,400	17,270	13.0	12.0	520840	73
	CA*F036*2*+EEP	23,400	17,270	12.0	11.0	503449	73
	CA*F042*2*+G*V90704C**	23,400	17,270	13.0	12.0	503450	73
	CA*F042*2*+GMV80703BXA	23,400	17,270	13.0	12.0	520839	73
	CA*X030*2*+G*V90453B**	23,400	17,270	13.0	12.0	503451	73
	CA*X030*2*+GMV80703BXA	23,400	17,270	13.0	12.0	520841	73
	CA*X036*2*+EEP	23,400	17,270	12.0	11.0	503452	73
	CA*X042*2*+G*V90704C**	23,400	17,270	13.0	12.0	503453	73
	CA*X042*2*+GMV80703BXA	23,400	17,270	13.0	12.0	520838	73
	CHPF024A2*+EEP	22,600	16,800	11.3	10.3	503454	73
	CHPF030A2*+EEP	23,400	17,270	12.0	11.0	503455	73
	CHPF030A2*+G*V90453B**	23,400	17,270	13.0	12.0	503456	73
	CHPF030A2*+GMV80703BXA	23,400	17,270	13.0	12.0	520916	73
	CHPF042B2*+G*V90704C**	23,400	17,270	13.0	12.0	503458	73
	CHPF042B2*+GMV80703BXA	23,400	17,270	13.0	12.0	520915	73
	CHPX024A2*+EEP	22,600	16,800	11.3	10.3	503459	73
	CHPX030A2*+EEP	23,400	17,270	12.0	11.0	503460	73
	CHPX030A2*+G*V90453B**	23,400	17,270	13.0	12.0	503461	73
	CHPX030A2*+GMV80703BXA	23,400	17,270	13.0	12.0	520914	73
	CHPX042B2*+G*V90704C**	23,400	17,270	13.0	12.0	503462	73
	CHPX042B2*+GMV80703BXA	23,400	17,270	13.0	12.0	520917	73
	H24F+EEP	22,600	16,800	11.3	10.3	467416	73
	H36F+EEP	23,400	17,270	12.0	11.0	467413	73

NOTES:

- 1.) Seasonal Energy Efficiency Ratio
- 2.) Energy Efficiency Ratio @ 80 °F/67 °F Inside - 95 °F
- 3.) When matching the outdoor unit to the indoor unit, use the piston supplied with the outdoor unit or that specified on the piston kit chart supplied with the indoor unit.
- 4.) Note: XX of A Model Designate Electric Heat Quantity.
- 5.) EEP - Order from Service Dept. Part No. B13707-38 or new Solid State Board B13707-35S. Part No. B13707-38 is not interchangeable with B13707-35S. The Goodman Gas Furnace contains the EEP cooling time delay.

PRODUCT SPECIFICATIONS

Performance Ratings (cont.)

Model	Evaporator Model	Total BTUH	Sensible BTUH	SEER	EER	ARI Ref. #	Decibel
CLJ30	AC30-XX	27,400	20,300	11.5	10.5	467575	73
	AC36-XX	28,000	20,750	12.0	11.0	467587	73
	ACHP3632-1	27,000	20,000	11.0	10.0	467578	73
	AEPT030-00A-1	29,000	21,500	12.5	11.5	467581	73
	AEPT036-00A-1	30,000	22,200	13.0	12.0	467582	73
	AH30	26,400	19,550	11.5	10.5	467585	73
	AH36	28,000	20,750	12.0	11.0	467673	73
	ARPF036-00B-1	28,000	20,750	12.0	11.0	467674	73
	ARPT032-00A-1	28,000	20,750	12.0	11.0	467649	73
	ARUF030-00A-1	27,000	20,000	11.0	10.0	467678	73
	ARUF032-00A-1	28,000	20,750	12.0	11.0	467676	73
	AWB30-XX	27,000	20,000	11.0	10.0	467666	73
	AWB36-XX	28,000	20,750	12.0	11.0	467672	73
	CA*F030*2*+EEP	27,000	20,000	11.2	10.5	503463	73
	CA*F030*2*+G*V90453B**	28,000	20,750	12.5	11.5	503465	73
	CA*F030*2*+GMV80703BXA	28,000	20,665	12.5	11.5	520923	73
	CA*F030*2A+EEP	27,000	20,000	11.2	10.5	467418	73
	CA*F036*2*+EEP	28,000	20,750	12.0	11.0	503466	73
	CA*F036*2A+EEP	28,000	20,750	12.0	11.0	467426	73
	CA*F042*2*+G*V90704C**	28,000	20,750	13.0	11.8	503467	73
	CA*F042*2*+GMV80703BXA	28,000	20,665	13.0	12.0	520925	73
	CA*X030*2*+EEP	27,000	20,000	11.2	10.5	503469	73
	CA*X030*2*+G*V90453B**	28,000	20,750	12.5	11.5	503470	73
	CA*X030*2*+GMV80703BXA	28,000	20,665	12.5	11.5	520924	73
	CA*X030*2A+EEP	27,000	20,000	11.2	10.5	486379	73
	CA*X036*2*+EEP	28,000	20,750	12.0	11.0	503471	73
	CA*X036*2A+EEP	28,000	20,750	12.0	11.0	486374	73
	CA*X042*2*+G*V90704C**	28,000	20,750	13.0	11.8	503472	73
	CA*X042*2*+GMV80703BXA	28,000	20,665	13.0	12.0	520921	73
	CHPF030A2*+EEP	28,000	20,750	12.0	11.0	503473	73
	CHPF030A2*+G*V90453B**	28,000	20,750	12.5	11.5	503474	73
	CHPF030A2*+GMV80703BXA	28,000	20,665	12.5	11.5	520926	73
	CHPF030A2A+EEP	28,000	20,750	12.0	11.0	467421	73
	CHPF030A2A+G*V90453B**	28,000	20,750	12.5	11.5	494482	73
	CHPF042B2*+G*V90704C**	28,000	20,750	13.0	11.8	503476	73
	CHPF042B2*+GMV80703BXA	28,000	20,665	13.0	12.0	520922	73
	CHPX030A2*+EEP	28,000	20,750	12.0	11.0	503477	73
	CHPX030A2*+G*V90453B**	28,000	20,750	12.5	11.5	503478	73
	CHPX030A2*+GMV80703BXA	28,000	20,665	12.5	11.5	520919	73
	CHPX030A2A+EEP	28,000	20,750	12.0	11.0	486390	73
	CHPX042B2*+G*V90704C**	28,000	20,750	13.0	11.8	503479	73
	CHPX042B2*+GMV80703BXA	28,000	20,665	13.0	12.0	520918	73
	H36F+EEP	28,000	20,750	12.0	11.0	467425	73

NOTES:

- 1.) Seasonal Energy Efficiency Ratio
- 2.) Energy Efficiency Ratio @ 80 °F/67 °F Inside - 95 °F
- 3.) When matching the outdoor unit to the indoor unit, use the piston supplied with the outdoor unit or that specified on the piston kit chart supplied with the indoor unit.
- 4.) Note: XX of A Model Designate Electric Heat Quantity.
- 5.) EEP - Order from Service Dept. Part No. B13707-38 or new Solid State Board B13707-35S. Part No. B13707-38 is **not interchangeable** with B13707-35S. The Goodman Gas Furnace contains the EEP cooling time delay.

PRODUCT SPECIFICATIONS

Performance Ratings (cont.)

Condenser	Evaporator Model	Total BTUH	Sensible BTUH	SEER	EER	ARI Ref. #	Decibel
CLJ36	AC36-XX	33,600	24,900	11.0	10.0	503480	77
	ACHP3632-1	33,000	24,500	11.0	10.0	503481	77
	AEPT036-00A-1	36,000	26,300	13.0	12.0	503482	77
	AH36	35,400	26,200	12.0	11.0	503483	77
	ARPF048-00B-1	36,000	26,300	12.0	11.0	503484	77
	ARPT036-00A-1	34,000	24,500	11.2	10.2	503485	77
	ARPT042-00A-1	36,000	26,300	12.0	11.0	503486	77
	ARUF036-00A-1	34,000	24,500	11.2	10.2	503487	77
	ARUF042-00A-1	36,000	26,300	12.0	11.0	503488	77
	AWB36-XX	36,000	26,300	12.0	11.0	503489	77
	CA*F036*2*+EEP	34,000	24,500	11.2	10.2	503490	77
	CA*F042*2*+EEP	36,000	26,300	12.0	11.0	503491	77
	CA*F042*2*+G*V90704C**	36,000	26,300	12.5	11.5	503492	77
	CA*F042*2*+G*V90905D**	36,000	26,300	13.0	11.8	503493	77
	CA*F042*2*+GMV80703BXA	36,000	26,300	12.5	11.5	520920	77
	CA*F042*2*+GMV80905CXA	36,000	26,300	13.0	12.0	520935	77
	CA*F048*2*+EEP	36,000	26,300	12.0	11.0	503496	77
	CA*F049*2*+G*V90905D**	36,000	26,300	13.0	11.8	503497	77
	CA*F049*2*+G*V91155D**	36,000	26,300	13.0	11.8	503498	77
	CA*F049*2*+GMV80905CXA	36,000	26,300	13.0	12.0	TBD	77
	CA*F049*2*+GMV81155CXA	36,000	26,300	13.0	12.0	520946	77
	CA*X036*2*+EEP	34,000	24,500	11.2	10.2	503500	77
	CA*X042*2*+EEP	36,000	26,300	12.0	11.0	503501	77
	CA*X042*2*+G*V90704C**	36,000	26,300	12.5	11.5	503502	77
	CA*X042*2*+GMV80703BXA	36,000	26,300	12.5	11.5	520927	77
	CA*X042*2*+GMV80905CXA	36,000	26,300	13.0	12.0	520939	77
	CA*X049*2*+G*V90905D**	36,000	26,300	13.0	11.8	503503	77
	CA*X049*2*+G*V91155D**	36,000	26,300	13.0	11.8	503504	77
	CA*X049*2*+GMV80905CXA	36,000	26,300	13.0	12.0	TBD	77
	CA*X049*2*+GMV81155CXA	36,000	26,300	13.0	12.0	520947	77
	CHPF030A2*+EEP	34,000	24,500	11.2	10.2	503505	77
	CHPF036B2*+EEP	36,000	26,300	12.0	11.0	503506	77
	CHPF042B2*+G*V90704C**	36,000	26,300	12.5	11.5	503507	77
	CHPF042B2*+GMV80703BXA	36,000	26,300	12.5	11.5	520937	77
	CHPF048D2*+G*V90905D**	36,000	26,300	13.0	11.8	503508	77
	CHPF048D2*+GMV80905CXA	36,000	26,300	13.0	12.0	520936	77
	CHPF048D2*+GMV81155CXA	36,000	26,300	13.0	12.0	520942	77
	CHPX042B2*+EEP	36,000	26,300	12.0	11.0	503511	77
	CHPX042B2*+G*V90704C**	36,000	26,300	12.5	11.5	503512	77
	CHPX042B2*+GMV80703BXA	36,000	26,300	12.5	11.5	520938	77
	CHPX048D2*+G*V90905D**	36,000	26,300	13.0	11.8	503513	77
	CHPX048D2*+G*V91155D**	36,000	26,300	13.0	11.8	503514	77
	CHPX048D2*+GMV80905CXA	36,000	26,300	13.0	12.0	520948	77
	CHPX048D2*+GMV81155CXA	36,000	26,300	13.0	12.0	520943	77
	H36F+EEP	34,000	24,500	11.2	10.2	503515	77
H49F+EEP	36,000	26,300	12.0	11.0	503516	77	

NOTES:

- 1.) Seasonal Energy Efficiency Ratio
- 2.) Energy Efficiency Ratio @ 80 °F/67 °F Inside - 95 °F
- 3.) When matching the outdoor unit to the indoor unit, use the piston supplied with the outdoor unit or that specified on the piston kit chart supplied with the indoor unit.
- 4.) Note: XX of A Model Designate Electric Heat Quantity.
- 5.) EEP - Order from Service Dept. Part No. B13707-38 or new Solid State Board B13707-35S. Part No. B13707-38 is not interchangeable with B13707-35S. The Goodman Gas Furnace contains the EEP cooling time delay.

PRODUCT SPECIFICATIONS

Performance Ratings (cont.)

Condenser	Evaporator Model	Total BTUH	Sensible BTUH	SEER	EER	ARI Ref. #	Decibel
CLJ42	AEPT060-00A-1	41,000	30,700	13.0	12.0	468546	77
	ARPF048-00B-1	40,500	30,200	12.0	11.0	468539	77
	ARPT042-00A-1	39,500	29,500	11.3	10.3	468562	77
	ARPT049-00A-1	40,500	30,200	12.0	11.0	468545	77
	ARUF042-00A-1	39,500	29,500	11.3	10.3	468557	77
	ARUF048-00A-1	40,000	30,000	11.5	10.5	468558	77
	ARUF049-00A-1	40,500	30,200	12.0	11.0	468561	77
	CA*F042*2*+EEP	39,000	29,200	11.3	10.3	503530	77
	CA*F060*2*+EEP	40,500	30,200	12.0	11.0	503531	77
	CA*F060*2*+G*V90905D**	40,000	30,000	12.5	11.5	503532	77
	CA*F060*2*+G*V91155D**	41,000	30,700	13.0	12.0	503533	77
	CA*F060*2*+GMV80905CXA	40,000	30,000	13.0	11.5	520944	77
	CA*F061*2*+GMV81155CXA	41,000	30,700	13.0	12.0	520965	77
	CA*X042*2*+EEP	39,000	29,200	11.3	10.3	503536	77
	CA*X060*2*+EEP	40,500	30,200	12.0	11.0	503537	77
	CA*X060*2*+G*V90905D**	40,000	30,000	12.5	11.5	503538	77
	CA*X060*2*+G*V91155D**	41,000	30,700	13.0	12.0	503539	77
	CA*X060*2*+GMV80905CXA	40,000	30,000	13.0	11.5	520945	77
	CA*X061*2*+GMV81155CXA	41,000	30,700	13.0	12.0	520975	77
	CHPF048D2*+EEP	40,000	30,000	12.0	11.0	503540	77
	CHPF048D2*+G*V90905D**	40,000	30,000	12.5	11.5	503541	77
	CHPF048D2*+GMV80905CXA	40,000	30,000	13.0	11.5	520960	77
	CHPF060D2*+G*V91155D**	41,000	30,700	13.0	12.0	503542	77
	CHPF060D2*+GMV81155CXA	41,000	30,700	13.0	12.0	520969	77
	CHPX048D2*+EEP	40,000	30,000	12.0	11.0	503545	77
	CHPX048D2*+G*V90905D**	40,000	30,000	12.5	11.5	503546	77
	CHPX048D2*+GMV80905CXA	40,000	30,000	13.0	11.5	520978	77
	CHPX060D2*+G*V91155D**	41,000	30,700	13.0	12.0	503547	77
	CHPX060D2*+GMV81155CXA	41,000	30,700	13.0	12.0	520977	77
	H49F+EEP	39,000	29,200	11.3	10.3	468541	77
H60F+EEP	40,500	30,200	12.0	11.0	468553	77	

NOTES:

- 1.) Seasonal Energy Efficiency Ratio
- 2.) Energy Efficiency Ratio @ 80 °F/67 °F Inside - 95 °F
- 3.) When matching the outdoor unit to the indoor unit, use the piston supplied with the outdoor unit or that specified on the piston kit chart supplied with the indoor unit.
- 4.) Note: XX of A Model Designate Electric Heat Quantity.
- 5.) EEP - Order from Service Dept. Part No. B13707-38 or new Solid State Board B13707-35S. Part No. B13707-38 is **not interchangeable** with B13707-35S. The Goodman Gas Furnace contains the EEP cooling time delay.

PRODUCT SPECIFICATIONS

Performance Ratings (cont.)

Condenser	Evaporator Model	Total BTUH	Sensible BTUH	SEER	EER	ARI Ref. #	Decibel	
CLJ48	AEPT060-00A-1	46,000	34,300	13.0	12.0	503548	80	
	ARPF048-00B-1	45,000	32,800	12.0	11.0	503549	80	
	ARPT049-00A-1	45,000	32,800	12.0	11.0	503550	80	
	ARUF048-00A-1	44,000	31,800	11.3	10.3	503551	80	
	ARUF049-00A-1	45,000	32,800	12.0	11.0	503552	80	
	CA*F060*2*+EEP	45,000	32,800	12.0	11.0	503553	80	
	CA*F060*2*+G*V91155D**	47,000	34,300	12.5	11.5	503554	80	
	CA*F061*2*+EEP	47,000	34,300	12.0	11.0	503555	80	
	CA*F061*2*+G*V90905D**	47,000	34,300	12.5	11.5	503556	80	
	CA*F061*2*+G*V91155D**	47,000	34,300	12.5	11.5	503557	80	
	CA*F061*2*+GMV80905CXA	47,000	34,300	12.5	11.5	520968	80	
	CA*F061*2*+GMV81155CXA	47,000	34,300	12.5	11.5	520971	80	
	CA*X060*2*+EEP	45,000	32,800	12.0	11.0	503560	80	
	CA*X061*2*+EEP	47,000	34,300	12.0	11.0	503561	80	
	CA*X061*2*+G*V90905D**	47,000	34,300	12.5	11.5	503562	80	
	CA*X061*2*+GMV80905CXA	47,000	34,300	12.5	11.5	520450	80	
	CA*X061*2*+GMV81155CXA	47,000	34,300	12.5	11.5	520967	80	
	CHPF048D2*+EEP	45,000	32,800	12.0	11.0	503563	80	
	CHPF060D2*+EEP	47,000	34,300	12.0	11.0	503564	80	
	CHPF060D2*+G*V90905D**	47,000	34,300	12.5	11.5	503565	80	
	CHPF060D2*+G*V91155D**	47,000	34,300	12.5	11.5	503566	80	
	CHPF060D2*+GMV80905CXA	47,000	34,300	12.5	11.5	520964	80	
	CHPF060D2*+GMV81155CXA	47,000	34,300	12.5	11.5	520962	80	
	CHPX048D2*+EEP	45,000	32,800	12.0	11.0	503569	80	
	CHPX060D2*+EEP	47,000	34,300	12.0	11.0	503570	80	
	CHPX060D2*+G*V90905D**	47,000	34,300	12.5	11.5	503571	80	
	CHPX060D2*+G*V91155D**	47,000	34,300	12.5	11.5	503572	80	
	CHPX060D2*+GMV80905CXA	47,000	34,300	12.5	11.5	520974	80	
	CHPX060D2*+GMV81155CXA	47,000	34,300	12.5	11.5	520953	80	
	H60F+EEP	45,000	32,800	12.0	11.0	503573	80	
	H61F+EEP	47,000	34,300	12.0	11.0	503574	80	
	CLJ60	AEPT060-00A-1	54,000	40,500	12.3	11.3	503588	80
		ARPF060-00B-1	56,000	42,000	12.0	11.0	503589	80
ARPT061-00A-1		56,000	42,000	12.0	11.0	503590	80	
ARUF060-00A-1		53,000	39,500	11.3	10.3	503591	80	
ARUF061-00A-1		56,000	42,000	12.0	11.0	503592	80	
CA*F060*2*+EEP		53,000	39,500	11.3	10.3	503593	80	
CA*F061*2*+EEP		55,000	41,200	12.0	11.0	503594	80	
CA*F061*2*+G*V91155D**		55,000	41,200	12.2	11.3	503595	80	
CA*F061*2*+GMV80905CXA		55,000	40,150	12.3	11.3	520952	80	
CA*F061*2*+GMV81155CXA		55,000	40,150	12.3	11.3	520970	80	
CA*X060*2*+EEP		53,000	39,500	11.3	10.3	503597	80	
CA*X061*2*+EEP		55,000	41,200	12.0	11.0	503598	80	
CA*X061*2*+G*V90905D**		55,000	41,200	12.2	11.3	503599	80	
CA*X061*2*+GMV80905CXA		55,000	40,150	12.3	11.3	520956	80	
CA*X061*2*+GMV81155CXA		55,000	40,150	12.3	11.3	520954	80	
CHPF060D2*+EEP		55,000	41,200	12.0	11.0	503600	80	
CHPF060D2*+G*V91155D**		55,000	41,200	12.2	11.2	503601	80	
CHPF060D2*+GMV80905CXA		55,000	40,150	12.3	11.3	520949	80	
CHPF060D2*+GMV81155CXA		55,000	40,150	12.3	11.3	520955	80	
CHPX060D2*+EEP		55,000	41,200	12.0	11.0	503603	80	
CHPX060D2*+G*V91155D**		55,000	41,200	12.2	11.2	503604	80	
CHPX060D2*+GMV80905CXA		55,000	40,150	12.3	11.3	520958	80	
CHPX060D2*+GMV81155CXA		55,000	40,150	12.3	11.3	520959	80	
H60F+EEP		53,000	39,500	11.3	10.3	503605	80	
H61F+EEP		55,000	41,200	12.0	11.0	503606	80	
CLJ64-1/-1C		ARUF061-00A-1	63,000	46,950	12.0	11.3	507104	80

NOTES:

- 1.) Seasonal Energy Efficiency Ratio
- 2.) Energy Efficiency Ratio @ 80 °F/67 °F Inside - 95 °F
- 3.) When matching the outdoor unit to the indoor unit, use the piston supplied with the outdoor unit or that specified on the piston kit chart supplied with the indoor unit.
- 4.) Note: XX of A Model Designate Electric Heat Quantity.
- 5.) EEP - Order from Service Dept. Part No. B13707-38 or new Solid State Board B13707-35S. Part No. B13707-38 is not interchangeable with B13707-35S. The Goodman Gas Furnace contains the EEP cooling time delay.



Goodman Manufacturing Company, L.P., reserves the right to discontinue, or change at any time, specifications or designs without notice or without incurring obligations.
 Copyright © 2004 Goodman Manufacturing Company, L.P. • Houston, Texas • Printed in the USA. • Goodman® brand products are made proudly in the USA.