



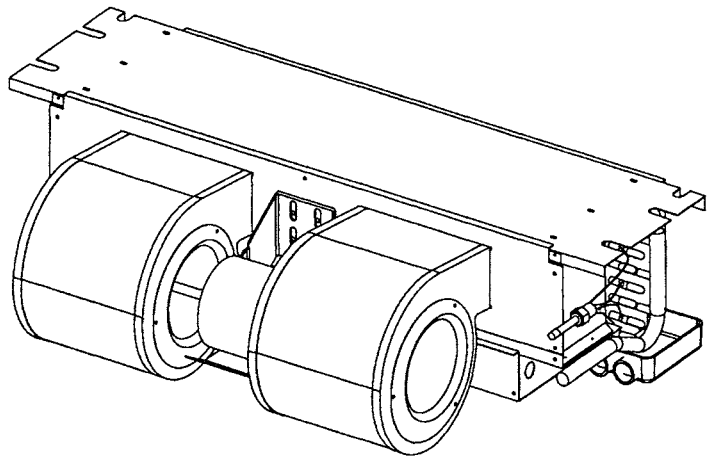
REPAIR PARTS

Models covered
in this manual

- AC18-00C
- AC18-00C A
- AC18-05C
- AC18-05C A
- AC18-05C B
- AC18-06C
- AC18-06C A
- AC18-06C B
- AC18-08C
- AC18-08C A
- AC18-08C B
- AC24-00C
- AC24-00C A
- AC24-05C
- AC24-05C A
- AC24-05C B
- AC24-06C
- AC24-06C A
- AC24-06C B
- AC24-08C
- AC24-08C A
- AC24-08C B
- AC24-10C
- AC24-10C A
- AC24-10C B
- AC30-00C
- AC30-00C A
- AC30-05C
- AC30-05C A
- AC30-05C B
- AC30-08C
- AC30-08C A
- AC30-08C B
- AC30-10C
- AC30-10C A
- AC30-10C B
- AC36-00C
- AC36-00C A
- AC36-05C
- AC36-05C A
- AC36-05C B
- AC36-08C
- AC36-08C A
- AC36-08C B
- AC36-10C
- AC36-10C A
- AC36-10C B

AC* Series Ceiling Mount Air Handlers

The last letter of the model number
represents the revision level;
example: AC18-00C A is AC18-00C rev. A.



This manual is to be used by qualified technicians only.

Made in the USA by:
Goodman Manufacturing Company, L.P.
2550 North Loop West, Suite 400
Houston Texas 77092

RP - 217F
July 2003

This manual replaces RP-217E.
Copyright © 2003 Goodman Manufacturing Company, L.P.

1

2

3

Important Information

Goodman is not responsible for personal injury or property damage resulting from improper service. Review all service information before beginning repairs.

Warranty service must be performed by an authorized technician, using authorized factory parts. If service is required after the warranty expires, Goodman also recommends contacting an authorized technician and using authorized factory parts.

For assistance within the U.S.A. contact:
Consumer Affairs Department
Goodman Manufacturing Company, L.P.
7401 Security Way
Houston, Texas 77040
877-254-4729-Telephone
713-863-2382-Facsimile

For assistance outside the U.S.A. contact:
International Division
Goodman Manufacturing Company, L.P.
7401 Security Way
Houston, Texas 77040
713-861-2500-Telephone
713-863-2382-Facsimile

Index

Functional Parts List	4 - 5
Illustration and Parts	6 - 13

Views shown are for parts illustrations only, not servicing procedures.

Revision F: Updates

Text Codes:

AR - As Required

NA - Not Available

NS - Not Shown

00000000 - See Note

QTY - Quantity Example (QTY 3) (If Quantity not shown, Quantity = 1)

M - Model Example (M1) (If M Code not shown, then part is used on all Models)

Expanded Model Nomenclature:

Example
M1 - Model#1
M2 - Model#2
M3 - Model#3

Functional Parts

**Part
No:**

Description:

BT13680-11	BLOWER WHEEL, 5.75 X 6.75 (M1, M2, M3, M4, M5, M6, M7, M8, M9, M10, M11)
BT13680-12	BLOWER WHEEL, 6.31 X 8.25 (M12, M13, M14, M15, M16, M17, M18, M19, M20, M21, M22, M23, M24, M25)
BT13680-13	BLOWER WHEEL, 6.75 X 8.25 (M26, M27, M28, M29, M30, M31, M32, M33, M34, M35, M36)
BT13680-14	BLOWER WHEEL, 6.75 X 9.25 (M37, M38, M39, M40, M41, M42, M43, M44, M45, M46, M47)
B1370735	BOARD, TIME DELAY (M2, M5, M8, M11, M13, M16, M19, M22, M25, M27, M30, M33, M36, M38, M41, M44, M47)
BT94580-00	CAPACITOR, 5/370
36960-00S	COIL TUBING ASM. AC18 (M1, M2, M3, M4, M5, M6, M7, M8, M9, M10, M11)
36960-01S	COIL TUBING ASM. AC24 (M12, M13, M14, M15, M16, M17, M18, M19, M20, M21, M22, M23, M24, M25)
36960-02S	COIL TUBING ASM. AC30 (M26, M27, M28, M29, M30, M31, M32, M33, M34, M35, M36)
36960-03S	COIL TUBING ASM. AC36 (M37, M38, M39, M40, M41, M42, M43, M44, M45, M46, M47)
BT1753509	DISCONNECT 60 AMP W/O CLIP
BT13690-04	FLOWRATOR, .052 (M1, M2, M3, M4, M5, M6, M7, M8, M9, M10, M11)
BT13690-01	FLOWRATOR, .059 (M12, M13, M14, M15, M16, M17, M18, M19, M20, M21, M22, M23, M24, M25)
BT13690-05	FLOWRATOR, .065 (M26, M27, M28, M29, M30, M31, M32, M33, M34, M35, M36)
BT13690-06	FLOWRATOR, .071 (M37, M38, M39, M40, M41, M42, M43, M44, M45, M46, M47)
BT14200-12	HEATER, 10KW (M24, M25, M35, M36, M46, M47)
BT14200-10	HEATER, 5KW (M4, M5, M15, M16, M29, M30, M40, M41)
BT14200-13	HEATER, 6KW (M7, M8, M18, M19)
BT14200-11	HEATER, 8KW (M1, M10, M11, M22, M23, M33, M34, M43, M44)
3600008	KIT, HTR (INCL. HTR & CTRL BTM) (M42)
3600007	KIT, HTR (INCL. HTR & CTRL BTM) (M39)
3600006	KIT, HTR (INCL. HTR & CTRL BTM) (M34)
3600009	KIT, HTR (INCL. HTR & CTRL BTM) (M45)
3600005	KIT, HTR (INCL. HTR & CTRL BTM) (M31)
3600004	KIT, HTR (INCL. HTR & CTRL BTM) (M28)
3600003	KIT, HTR (INCL. HTR & CTRL BTM) (M23)
3600002	KIT, HTR (INCL. HTR & CTRL BTM) (M9, M20)
3600001	KIT, HTR (INCL. HTR & CTRL BTM) (M6, M17)
3600000	KIT, HTR (INCL. HTR & CTRL BTM) (M3, M14)
BT13400-16	MOTOR, 1/3 HP (M37, M38, M39, M40, M41, M42, M43, M44, M45, M46, M47)
BT13400-15	MOTOR, 1/4 HP (M12, M13, M14, M15, M16, M17, M18, M19, M20, M21, M22, M23, M24, M25, M26, M27, M28, M29, M30, M31, M32, M33, M34, M35, M36)
BT13400-14	MOTOR, 1/8 HP (M1, M2, M3, M4, M5, M6, M7, M8, M9, M10, M11)
BT1370700	RELAY, TIME DELAY (M1, M3, M4, M6, M7, M9, M10, M12, M14, M15, M17, M18, M20, M21, M23, M24, M26, M28, M29, M31, M32, M34, M35, M37, M39, M40, M42, M43, M45, M46)
BT12565-00	SEQUENCER, 5KW (M3, M4, M5, M14, M15, M16, M28, M29, M30, M39, M40, M41)
BT12565-01	SEQUENCER, 8-10KW (M6, M7, M8, M9, M10, M11, M17, M18, M19, M20, M21, M22, M23, M24, M25, M31, M32, M33, M34, M35, M36, M42, M43, M44, M45, M46, M47)
BT12437-22	THERMOSTAT (M3, M6, M9, M14, M17, M20, M23, M28, M31, M34, M39, M42, M45)
BT11416-01	TRANSFORMER, 230 TO 24V

The last letter of the model number represents the revision level; example: AC18-05C A is AC18-05C rev. A.

Functional Parts

Part

No: Description:

SPECIAL PARTS

IO-162C I & O MANUAL
 RP-217F REPAIR PARTS MANUAL

Expanded Model Nomenclature

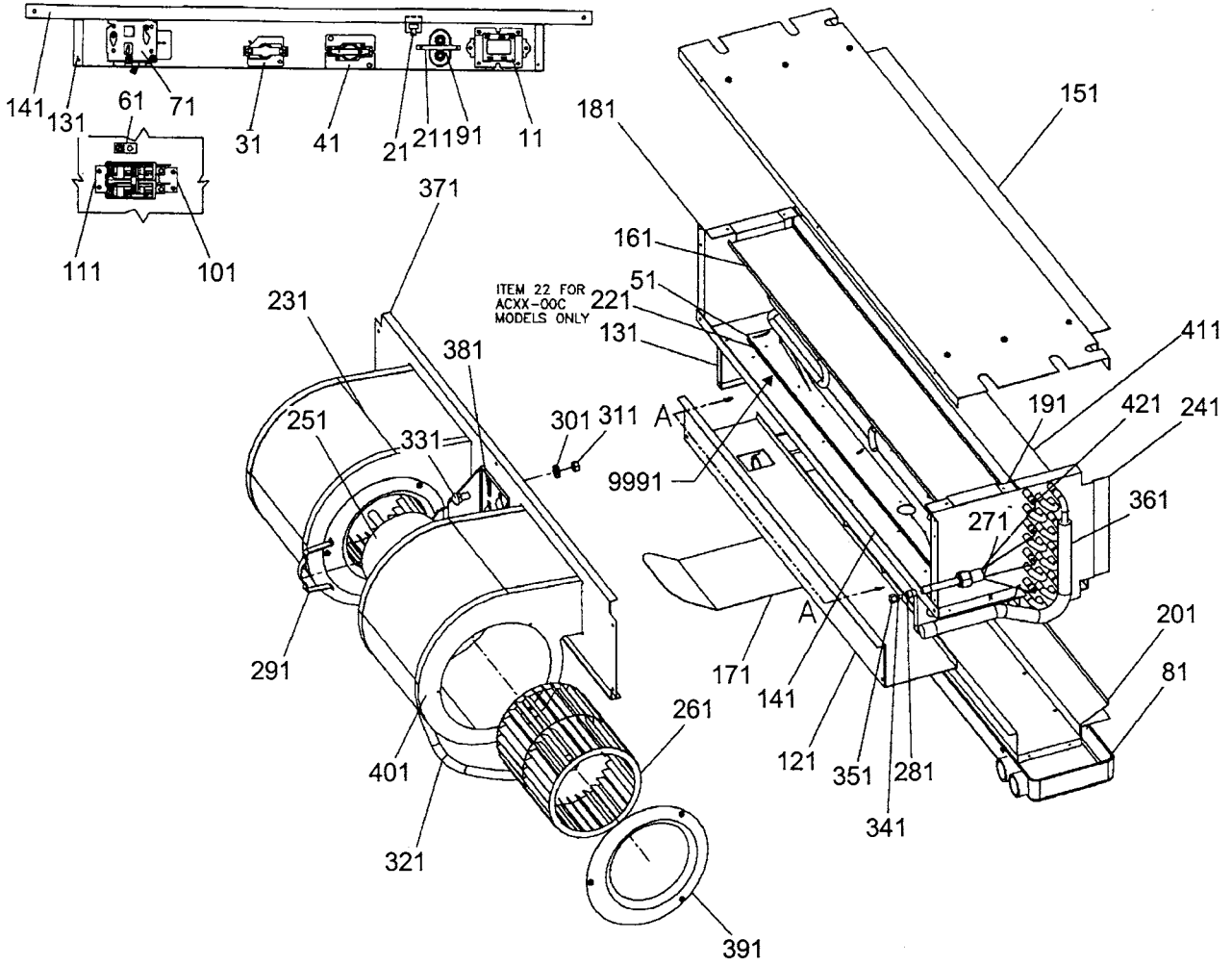
M1 - AC18-00C
 M2 - AC18-00C A
 M3 - AC18-05C
 M4 - AC18-05C A
 M5 - AC18-05C B
 M6 - AC18-06C
 M7 - AC18-06C A
 M8 - AC18-06C B
 M9 - AC18-08C
 M10 - AC18-08C A
 M11 - AC18-08C B
 M12 - AC24-00C
 M13 - AC24-00C A
 M14 - AC24-05C
 M15 - AC24-05C A
 M16 - AC24-05C B
 M17 - AC24-06C
 M18 - AC24-06C A
 M19 - AC24-06C B
 M20 - AC24-08C
 M21 - AC24-08C A
 M22 - AC24-08C B
 M23 - AC24-10C
 M24 - AC24-10C A
 M25 - AC24-10C B
 M26 - AC30-00C
 M27 - AC30-00C A
 M28 - AC30-05C
 M29 - AC30-05C A
 M30 - AC30-05C B
 M31 - AC30-08C
 M32 - AC30-08C A
 M33 - AC30-08C B
 M34 - AC30-10C
 M35 - AC30-10C A
 M36 - AC30-10C B
 M37 - AC36-00C
 M38 - AC36-00C A
 M39 - AC36-05C
 M40 - AC36-05C A
 M41 - AC36-05C B
 M42 - AC36-08C
 M43 - AC36-08C A
 M44 - AC36-08C B
 M45 - AC36-10C

M46 - AC36-10C A
 M47 - AC36-10C B

The last letter of the model number represents the revision level; example: AC18-05C A is AC18-05C rev. A.

AC* Model Air Handlers

VIEW A-A

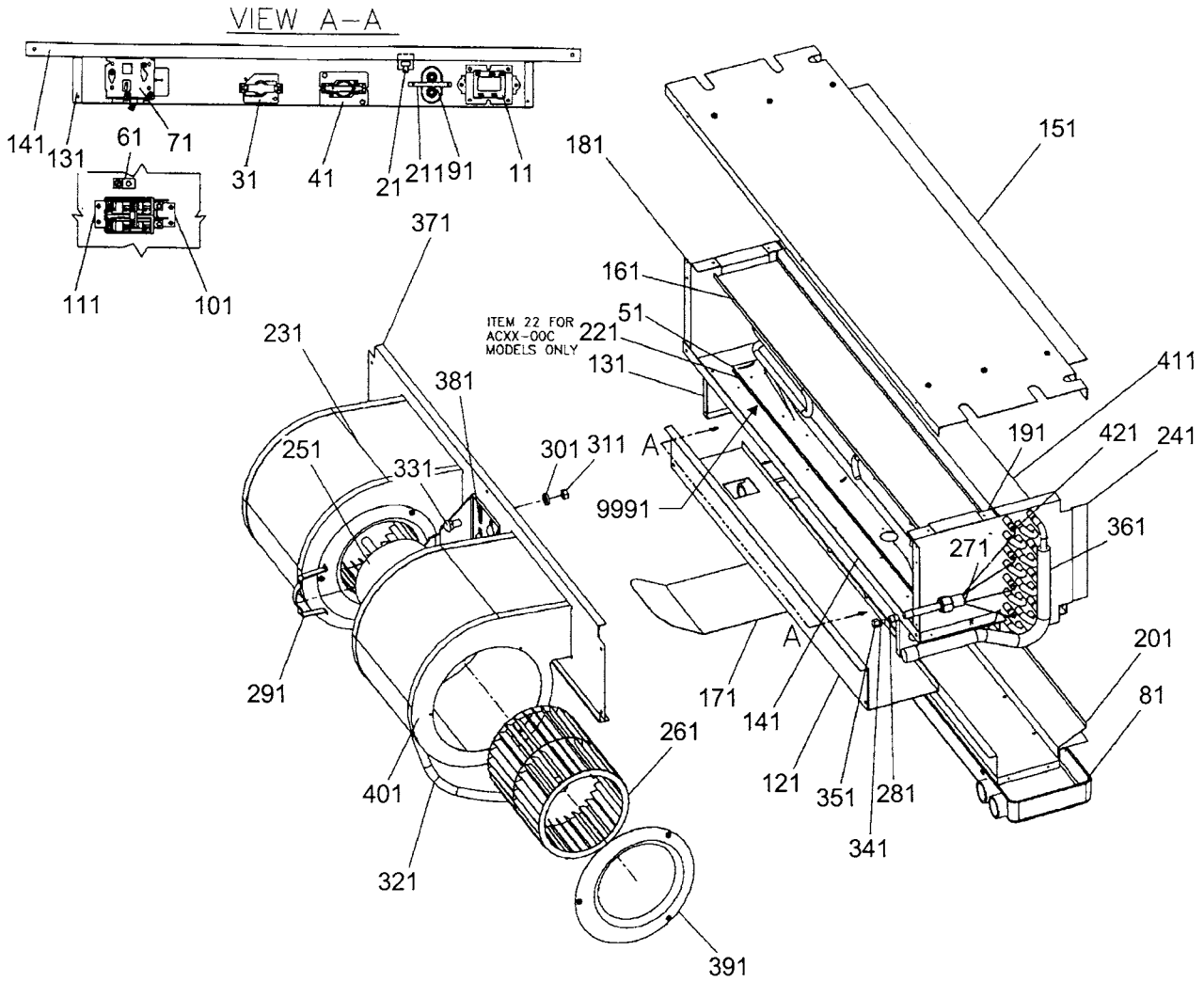


AC* Model Air Handlers

Ref. Part No:	Description:	Ref. Part No:	Description:
<i>Image 1:</i>		Expanded Model Nomenclature	
11	BT11416-01 TRANSFORMER, 230 TO 24V	M1 - AC18-00C	M46 - AC36-10C A
21	BT12437-22 THERMOSTAT (M3, M6, M9, M14, M17, M20, M23, M28, M31, M34, M39, M42, M45)	M2 - AC18-00C A	M47 - AC36-10C B
31	BT12565-00 SEQUENCER, 5KW (M3, M4, M5, M14, M15, M16, M28, M29, M30, M39, M40, M41)	M3 - AC18-05C	
31	BT12565-01 SEQUENCER, 8-10KW (M6, M7, M8, M9, M10, M11, M17, M18, M19, M20, M21, M22, M23, M24, M25, M31, M32, M33, M34, M35, M36, M42, M43, M44, M45, M46, M47)	M4 - AC18-05C A	
41	B1370735 BOARD, TIME DELAY (M2, M5, M8, M11, M13, M16, M19, M22, M25, M27, M30, M33, M36, M38, M41, M44, M47)	M5 - AC18-05C B	
41	BT1370700 RELAY, TIME DELAY (M1, M3, M4, M6, M7, M9, M10, M12, M14, M15, M17, M18, M20, M21, M23, M24, M26, M28, M29, M31, M32, M34, M35, M37, M39, M40, M42, M43, M45, M46)	M6 - AC18-06C	
51	3600000 KIT, HTR (INCL. HTR & CTRL BTM) (M3, M14)	M7 - AC18-06C A	
51	3600001 KIT, HTR (INCL. HTR & CTRL BTM) (M6, M17)	M8 - AC18-06C B	
51	3600002 KIT, HTR (INCL. HTR & CTRL BTM) (M9, M20)	M9 - AC18-08C	
51	3600003 KIT, HTR (INCL. HTR & CTRL BTM) (M23)	M10 - AC18-08C A	
51	3600004 KIT, HTR (INCL. HTR & CTRL BTM) (M28)	M11 - AC18-08C B	
51	3600005 KIT, HTR (INCL. HTR & CTRL BTM) (M31)	M12 - AC24-00C	
51	3600006 KIT, HTR (INCL. HTR & CTRL BTM) (M34)	M13 - AC24-00C A	
51	3600007 KIT, HTR (INCL. HTR & CTRL BTM) (M39)	M14 - AC24-05C	
51	3600008 KIT, HTR (INCL. HTR & CTRL BTM) (M42)	M15 - AC24-05C A	
51	3600009 KIT, HTR (INCL. HTR & CTRL BTM) (M45)	M16 - AC24-05C B	
61	BT13715-00 GROUND LUG	M17 - AC24-06C	
71	BT1753509 DISCONNECT 60 AMP W/O CLIP	M18 - AC24-06C A	
81	36700-02 DRAIN PAN, SERVICE KIT (LG.) (M37, M38, M39, M40, M41, M42, M43, M44, M45, M46, M47)	M19 - AC24-06C B	
81	36700-01 DRAIN PAN, SERVICE KIT (MED.) (M26, M27, M28, M29, M30, M31, M32, M33, M34, M35, M36)	M20 - AC24-08C	
81	36700-00 DRAIN PAN, SERVICE KIT (SM) (M1, M2, M3, M4, M5, M6, M7, M8, M9, M10, M11, M12, M13, M14, M15, M16, M17, M18, M19, M20, M21, M22, M23, M24, M25)	M21 - AC24-08C A	
		M22 - AC24-08C B	
		M23 - AC24-10C	
		M24 - AC24-10C A	
		M25 - AC24-10C B	
		M26 - AC30-00C	
		M27 - AC30-00C A	
		M28 - AC30-05C	
		M29 - AC30-05C A	
		M30 - AC30-05C B	
		M31 - AC30-08C	
		M32 - AC30-08C A	
		M33 - AC30-08C B	
		M34 - AC30-10C	
		M35 - AC30-10C A	
		M36 - AC30-10C B	
		M37 - AC36-00C	
		M38 - AC36-00C A	
		M39 - AC36-05C	
		M40 - AC36-05C A	
		M41 - AC36-05C B	
		M42 - AC36-08C	
		M43 - AC36-08C A	
		M44 - AC36-08C B	
		M45 - AC36-10C	

The last letter of the model number represents the revision level; example: AC18-05C A is AC18-05C rev. A.

AC* Model Air Handlers

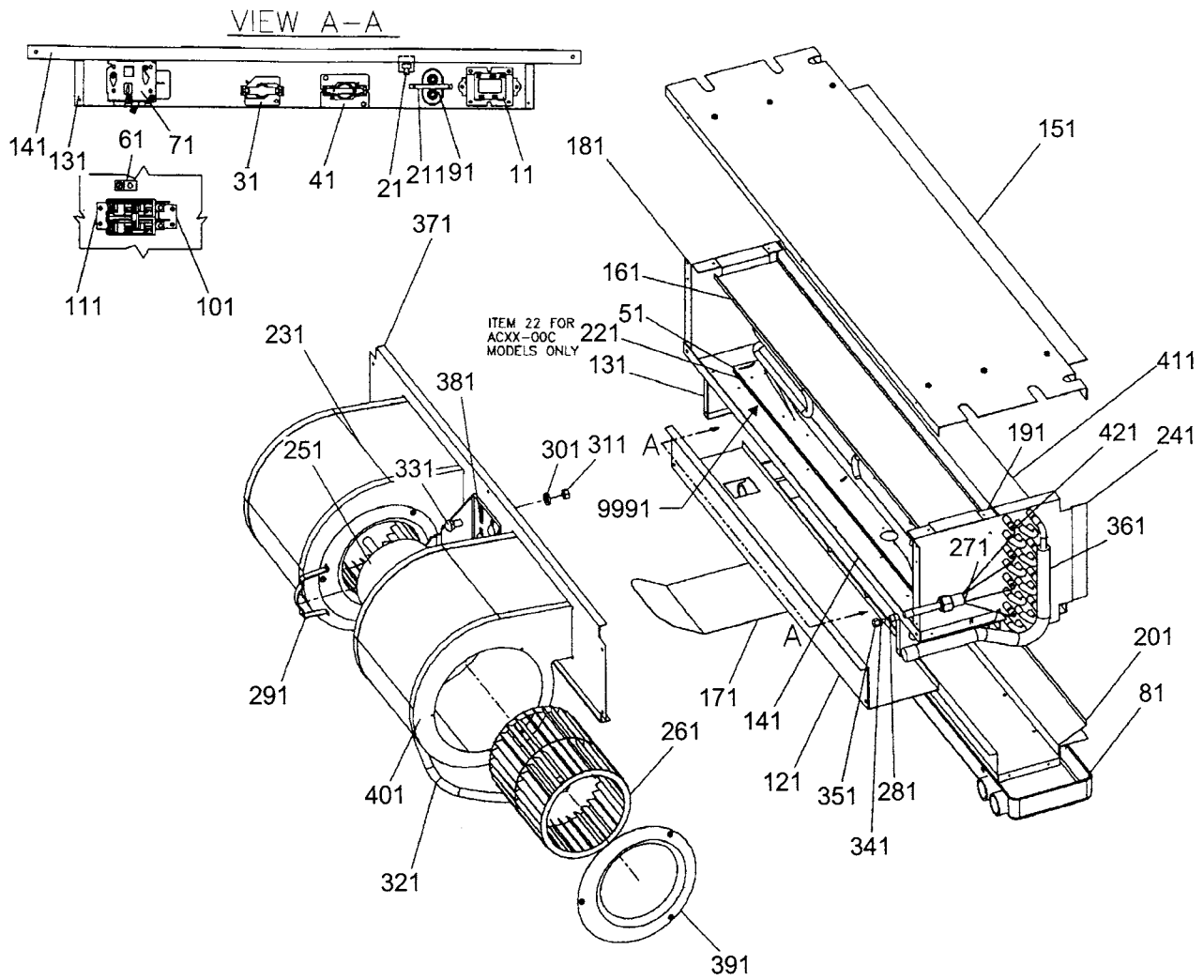


AC* Model Air Handlers

Ref. Part No:	No:	Description:	Ref. Part No:	No:	Description:
<i>Image 1:</i>			Expanded Model Nomenclature		
91	BT94580-00	CAPACITOR, 5/370	M1 - AC18-00C		M46 - AC36-10C A
101	17536-02	BREAKER, SUPPORT	M2 - AC18-00C A		M47 - AC36-10C B
111	17536-03	BREAKER, SUPPORT	M3 - AC18-05C		
121	36100-00	CONTROL BOX TOP	M4 - AC18-05C A		
131	36110-03	CONTROL BOX, WRAPPER (M1, M3, M4, M6, M7, M9, M10, M12, M14, M15, M17, M18, M20, M21, M23, M24, M26, M28, M29, M31, M32, M34, M35, M37, M39, M40, M42, M43, M45, M46)	M5 - AC18-05C B		
131	36110-05	CONTROL BOX, WRAPPER (M2, M5, M8, M11, M13, M16, M19, M22, M25, M27, M30, M33, M36, M38, M41, M44, M47)	M6 - AC18-06C		
141	36120-02	CONTROL BOX BOTTOM (LARGE) (M37, M38, M39, M40, M41, M42, M43, M44, M45, M46, M47)	M7 - AC18-06C A		
141	36120-01	CONTROL BOX BOTTOM (MED.) (M26, M27, M28, M29, M30, M31, M32, M33, M34, M35, M36)	M8 - AC18-06C B		
141	36120-00	CONTROL BOX BOTTOM (SMALL) (M1, M2, M3, M4, M5, M6, M7, M8, M9, M10, M11, M12, M13, M14, M15, M16, M17, M18, M19, M20, M21, M22, M23, M24, M25)	M9 - AC18-08C		
151	36130-02	EVAP. TOP PANEL (LARGE) (M37, M38, M39, M40, M41, M42, M43, M44, M45, M46, M47)	M10 - AC18-08C A		
151	36130-01	EVAP. TOP PANEL (MED) (M26, M27, M28, M29, M30, M31, M32, M33, M34, M35, M36)	M11 - AC18-08C B		
151	36130-00	EVAP. TOP PANEL (SMALL) (M1, M2, M3, M4, M5, M6, M7, M8, M9, M10, M11, M12, M13, M14, M15, M16, M17, M18, M19, M20, M21, M22, M23, M24, M25)	M12 - AC24-00C		
161	36150-02	EVAP. COIL BLOCK-OFF (LG) (M37, M38, M39, M40, M41, M42, M43, M44, M45, M46, M47)	M13 - AC24-00C A		
161	36150-01	EVAP. COIL BLOCK-OFF (MED) (M26, M27, M28, M29, M30, M31, M32, M33, M34, M35, M36)	M14 - AC24-05C		
161	36150-00	EVAP. COIL BLOCK-OFF (SMALL) (M1, M2, M3, M4, M5, M6, M7, M8, M9, M10, M11, M12, M13, M14, M15, M16, M17, M18, M19, M20, M21, M22, M23, M24, M25)	M15 - AC24-05C A		
171	36170-00	MOTOR SHIELD	M16 - AC24-05C B		
181	36220-00	ENDPLATE, BRACKET	M17 - AC24-06C		
191	36220-01	ENDPLATE, BRACKET	M18 - AC24-06C A		
201	36300-05	SPOTWELD ASM., EVAP. (LARGE) (M37, M38, M39, M40, M41, M42, M43, M44, M45, M46, M47)	M19 - AC24-06C B		
201	36300-04	SPOTWELD ASM., EVAP. (MED.) (M26, M27, M28, M29, M30, M31, M32, M33, M34, M35, M36)	M20 - AC24-08C		
201	36300-03	SPOTWELD ASM., EVAP. (SMALL) (M1, M2, M3, M4, M5, M6, M7, M8, M9, M10, M11, M12, M13, M14, M15, M16, M17, M18, M19, M20, M21, M22, M23, M24, M25)	M21 - AC24-08C A		
211	36300-07	MOUNTING BRACKET, CAP.	M22 - AC24-08C B		
221	36300-08	BLOCK-OFF, CONTROL BOX (M1, M2, M12, M13, M26, M27, M37, M38)	M23 - AC24-10C		
			M24 - AC24-10C A		
			M25 - AC24-10C B		
			M26 - AC30-00C		
			M27 - AC30-00C A		
			M28 - AC30-05C		
			M29 - AC30-05C A		
			M30 - AC30-05C B		
			M31 - AC30-08C		
			M32 - AC30-08C A		
			M33 - AC30-08C B		
			M34 - AC30-10C		
			M35 - AC30-10C A		
			M36 - AC30-10C B		
			M37 - AC36-00C		
			M38 - AC36-00C A		
			M39 - AC36-05C		
			M40 - AC36-05C A		
			M41 - AC36-05C B		
			M42 - AC36-08C		
			M43 - AC36-08C A		
			M44 - AC36-08C B		
			M45 - AC36-10C		

The last letter of the model number represents the revision level; example: AC18-05C A is AC18-05C rev. A.

AC* Model Air Handlers

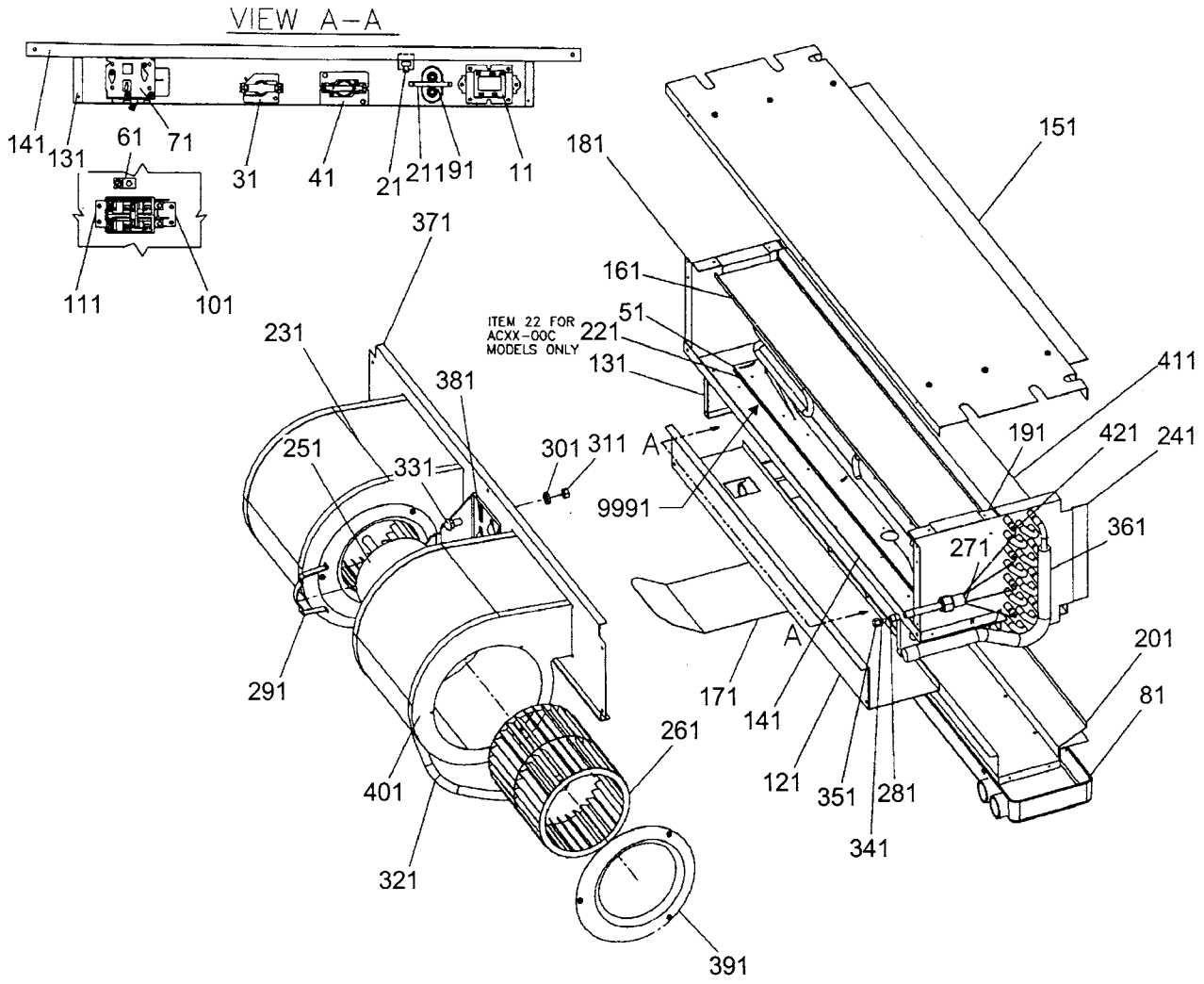


AC* Model Air Handlers

Ref. Part No:	Description:	Ref. Part No:	Description:
<i>Image 1:</i>		Expanded Model Nomenclature	
231 36501-00S	BLOWER ASM. AC18 (COMPLETE) (M1, M2, M3, M4, M5, M6, M7, M8, M9, M10, M11)	M1 - AC18-00C	M46 - AC36-10C A
231 36501-01S	BLOWER ASM. AC24 (COMPLETE) (M12, M13, M14, M15, M16, M17, M18, M19, M20, M21, M22, M23, M24, M25)	M2 - AC18-00C A	M47 - AC36-10C B
231 36501-02S	BLOWER ASM. AC30 (COMPLETE) (M26, M27, M28, M29, M30, M31, M32, M33, M34, M35, M36)	M3 - AC18-05C	
231 36501-03S	BLOWER ASM. AC36 (COMPLETE) (M37, M38, M39, M40, M41, M42, M43, M44, M45, M46, M47)	M4 - AC18-05C A	
241 36960-00S	COIL TUBING ASM. AC18 (M1, M2, M3, M4, M5, M6, M7, M8, M9, M10, M11)	M5 - AC18-05C B	
241 36960-01S	COIL TUBING ASM. AC24 (M12, M13, M14, M15, M16, M17, M18, M19, M20, M21, M22, M23, M24, M25)	M6 - AC18-06C	
241 36960-02S	COIL TUBING ASM. AC30 (M26, M27, M28, M29, M30, M31, M32, M33, M34, M35, M36)	M7 - AC18-06C A	
241 36960-03S	COIL TUBING ASM. AC36 (M37, M38, M39, M40, M41, M42, M43, M44, M45, M46, M47)	M8 - AC18-06C B	
251 BT13400-16	MOTOR, 1/3 HP (M37, M38, M39, M40, M41, M42, M43, M44, M45, M46, M47)	M9 - AC18-08C	
251 BT13400-15	MOTOR, 1/4 HP (M12, M13, M14, M15, M16, M17, M18, M19, M20, M21, M22, M23, M24, M25, M26, M27, M28, M29, M30, M31, M32, M33, M34, M35, M36)	M10 - AC18-08C A	
251 BT13400-14	MOTOR, 1/8 HP (M1, M2, M3, M4, M5, M6, M7, M8, M9, M10, M11)	M11 - AC18-08C B	
261 BT13680-11	BLOWER WHEEL, 5.75 X 6.75 (M1, M2, M3, M4, M5, M6, M7, M8, M9, M10, M11)	M12 - AC24-00C	
261 BT13680-12	BLOWER WHEEL, 6.31 X 8.25 (M12, M13, M14, M15, M16, M17, M18, M19, M20, M21, M22, M23, M24, M25)	M13 - AC24-00C A	
261 BT13680-13	BLOWER WHEEL, 6.75 X 8.25 (M26, M27, M28, M29, M30, M31, M32, M33, M34, M35, M36)	M14 - AC24-05C	
261 BT13680-14	BLOWER WHEEL, 6.75 X 9.25 (M37, M38, M39, M40, M41, M42, M43, M44, M45, M46, M47)	M15 - AC24-05C A	
271 BT13690-04	FLOWRATOR, .052 (M1, M2, M3, M4, M5, M6, M7, M8, M9, M10, M11)	M16 - AC24-05C B	
271 BT13690-01	FLOWRATOR, .059 (M12, M13, M14, M15, M16, M17, M18, M19, M20, M21, M22, M23, M24, M25)	M17 - AC24-06C	
271 BT13690-05	FLOWRATOR, .065 (M26, M27, M28, M29, M30, M31, M32, M33, M34, M35, M36)	M18 - AC24-06C A	
271 BT13690-06	FLOWRATOR, .071 (M37, M38, M39, M40, M41, M42, M43, M44, M45, M46, M47)	M19 - AC24-06C B	
281 BT13733-00	ACCESS FITTING	M20 - AC24-08C	
291 BT13925-00	CLAMP, MOTOR MOUNT (QTY 2)	M21 - AC24-08C A	
301 BT13929-04	FENDER WASHER (QTY 4)	M22 - AC24-08C B	
311 BT13930-07	NYLON LOCKNUT (QTY 4)	M23 - AC24-10C	
321 BT1393410	FLEX CONDUIT (QTY AR)	M24 - AC24-10C A	
331 BT13937-06	CARRIAGE BOLT (QTY 4)	M25 - AC24-10C B	
341 BT17870-00	CORE, VALVE	M26 - AC30-00C	
351 BT91020-00	CAP W/O-RING	M27 - AC30-00C A	
		M28 - AC30-05C	
		M29 - AC30-05C A	
		M30 - AC30-05C B	
		M31 - AC30-08C	
		M32 - AC30-08C A	
		M33 - AC30-08C B	
		M34 - AC30-10C	
		M35 - AC30-10C A	
		M36 - AC30-10C B	
		M37 - AC36-00C	
		M38 - AC36-00C A	
		M39 - AC36-05C	
		M40 - AC36-05C A	
		M41 - AC36-05C B	
		M42 - AC36-08C	
		M43 - AC36-08C A	
		M44 - AC36-08C B	
		M45 - AC36-10C	

The last letter of the model number represents the revision level; example: AC18-05C A is AC18-05C rev. A.

AC* Model Air Handlers



AC* Model Air Handlers

Ref. Part No: No:	Description:
<i>Image 1:</i>	
361 30937-29	MANIFOLD ASM.
371 36140-00	BLOWER DECK AC18 (M1, M2, M3, M4, M5, M6, M7, M8, M9, M10, M11)
371 36140-01	BLOWER DECK AC24 (M12, M13, M14, M15, M16, M17, M18, M19, M20, M21, M22, M23, M24, M25)
371 36140-02	BLOWER DECK AC30 (M26, M27, M28, M29, M30, M31, M32, M33, M34, M35, M36)
371 36140-03	BLOWER DECK AC36 (M37, M38, M39, M40, M41, M42, M43, M44, M45, M46, M47)
381 36160-00	MOTOR MOUNT BRACKET
391 36420-00	VENTURI, 5.000 DIA. (M1, M2, M3, M4, M5, M6, M7, M8, M9, M10, M11)
391 36420-01	VENTURI, 5.500 DIA (M12, M13, M14, M15, M16, M17, M18, M19, M20, M21, M22, M23, M24, M25, M26, M27, M28, M29, M30, M31, M32, M33, M34, M35, M36, M37, M38, M39, M40, M41, M42, M43, M44, M45, M46, M47)
401 36602-01	BLOWER HOUSING, 10.75 (M12, M13, M14, M15, M16, M17, M18, M19, M20, M21, M22, M23, M24, M25, M26, M27, M28, M29, M30, M31, M32, M33, M34, M35, M36, M37, M38, M39, M40, M41, M42, M43, M44, M45, M46, M47)
401 36602-00	BLOWER HOUSING, 8" (M1, M2, M3, M4, M5, M6, M7, M8, M9, M10, M11)
411 36649-02	COIL ASM. (LG.) (M37, M38, M39, M40, M41, M42, M43, M44, M45, M46, M47)
411 36649-01	COIL ASM. (MED) (M26, M27, M28, M29, M30, M31, M32, M33, M34, M35, M36)
411 36649-00	COIL ASM. (SMALL) (M1, M2, M3, M4, M5, M6, M7, M8, M9, M10, M11, M12, M13, M14, M15, M16, M17, M18, M19, M20, M21, M22, M23, M24, M25)
421 37405-00	REDUCER
9991 BT14200-12	HEATER, 10KW (M24, M25, M35, M36, M46, M47)
9991 BT14200-10	HEATER, 5KW (M4, M5, M15, M16, M29, M30, M40, M41)
9991 BT14200-13	HEATER, 6KW (M7, M8, M18, M19)
9991 BT14200-11	HEATER, 8KW (M1, M10, M11, M22, M23, M33, M34, M43, M44)

Ref. Part No: No: Description:

Expanded Model Nomenclature

M1 - AC18-00C
M2 - AC18-00C A
M3 - AC18-05C
M4 - AC18-05C A
M5 - AC18-05C B
M6 - AC18-06C
M7 - AC18-06C A
M8 - AC18-06C B
M9 - AC18-08C
M10 - AC18-08C A
M11 - AC18-08C B
M12 - AC24-00C
M13 - AC24-00C A
M14 - AC24-05C
M15 - AC24-05C A
M16 - AC24-05C B
M17 - AC24-06C
M18 - AC24-06C A
M19 - AC24-06C B
M20 - AC24-08C
M21 - AC24-08C A
M22 - AC24-08C B
M23 - AC24-10C
M24 - AC24-10C A
M25 - AC24-10C B
M26 - AC30-00C
M27 - AC30-00C A
M28 - AC30-05C
M29 - AC30-05C A
M30 - AC30-05C B
M31 - AC30-08C
M32 - AC30-08C A
M33 - AC30-08C B
M34 - AC30-10C
M35 - AC30-10C A
M36 - AC30-10C B
M37 - AC36-00C
M38 - AC36-00C A
M39 - AC36-05C
M40 - AC36-05C A
M41 - AC36-05C B
M42 - AC36-08C
M43 - AC36-08C A
M44 - AC36-08C B
M45 - AC36-10C

M46 - AC36-10C A
M47 - AC36-10C B

The last letter of the model number represents the revision level; example: AC18-05C A is AC18-05C rev. A.