

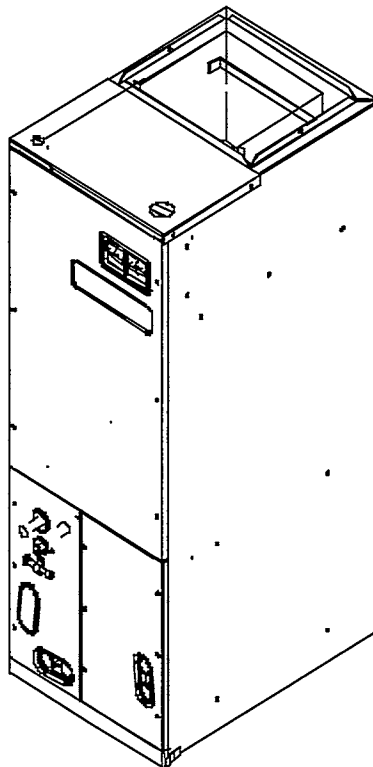
Goodman[®]

REPAIR PARTS

AEPT Series 2.5 - 5 Ton Air Handlers



- AEPT030-00A-1
- AEPT030-00C-1
- AEPT036-00A-1
- AEPT036-00C-1
- AEPT060-00A-1
- AEPT060-00C-1



Made in the USA by:
Goodman Manufacturing Company, L.P.
2550 North Loop West, Suite 400
Houston Texas 77092

RP - 298A
April 2004

This manual is to be used by
qualified technicians only.

This manual replaces RP-298.
Copyright © 2003-04 Goodman Manufacturing Company, L.P.

Important Information

Goodman Manufacturing Company, L.P. is not responsible for personal injury or property damage resulting from improper service. Review all service information before beginning repairs.

Warranty service must be performed by an authorized technician, using authorized factory parts. If service is required after the warranty expires, Goodman Manufacturing Company, L.P. also recommends contacting an authorized technician and using authorized factory parts.

For assistance within the U.S.A. contact:
Consumer Affairs Department
Goodman Manufacturing Company, L.P.
7401 Security Way
Houston, Texas 77040
877-254-4729-Telephone
713-863-2382-Facsimile

For assistance outside the U.S.A. contact:
International Division
Goodman Manufacturing Company, L.P.
7401 Security Way
Houston, Texas 77040
713-861-2500-Telephone
713-863-2382-Facsimile

Index

Functional Parts List	5
Illustration and Parts	6 - 9

Views shown are for parts illustrations only, not servicing procedures.

Revision A: Adds models AEPT030-00C-1, AEPT036-00C-1, and AEPT060-00C-1 and updates the service coil assemblies.

Text Codes:

AR - As Required

NA - Not Available

NS - Not Shown

00000000 - See Note

QTY - Quantity Example (QTY 3) (If Quantity not shown, Quantity = 1)

M - Model Example (M1) (If M Code not shown, then part is used on all Models)

Expanded Model Nomenclature:

Example
M1 - Model#1
M2 - Model#2
M3 - Model#3

Functional Parts

Part

No: Description:

B1368037	BLOWER WHEEL (9 X 8) (M1, M2)
B1368048	BLOWER WHEEL (10 X 10) (M3, M4, M5, M6)
B1368270	ECM BOARD, PRIMARY
B1378701	HIGH VOLTAGE WIRING HARNESS
B1378700	LOW VOLTAGE WIRING HARNESS
B13400702A	MOTOR, VAR. SPEED, 1/2 HP W/CONTROLLER (M1, M2)
B13400704A	MOTOR, VAR. SPEED, 3/4 HP W/CONTROLLER (M3, M4, M5, M6)
12624-05	SERVICE EVAP COIL ASM (M5, M6)
12624-04	SERVICE EVAP COIL ASM (M3, M4)
12624-03	SERVICE EVAP COIL ASM (M1, M2)
B1141643	TRANSFORMER, 208/230 PRI. TO 24V SEC.
B3232213	TXV24-42 (M1, M2)
B3232214	TXV48-61 (M3, M4, M5, M6)

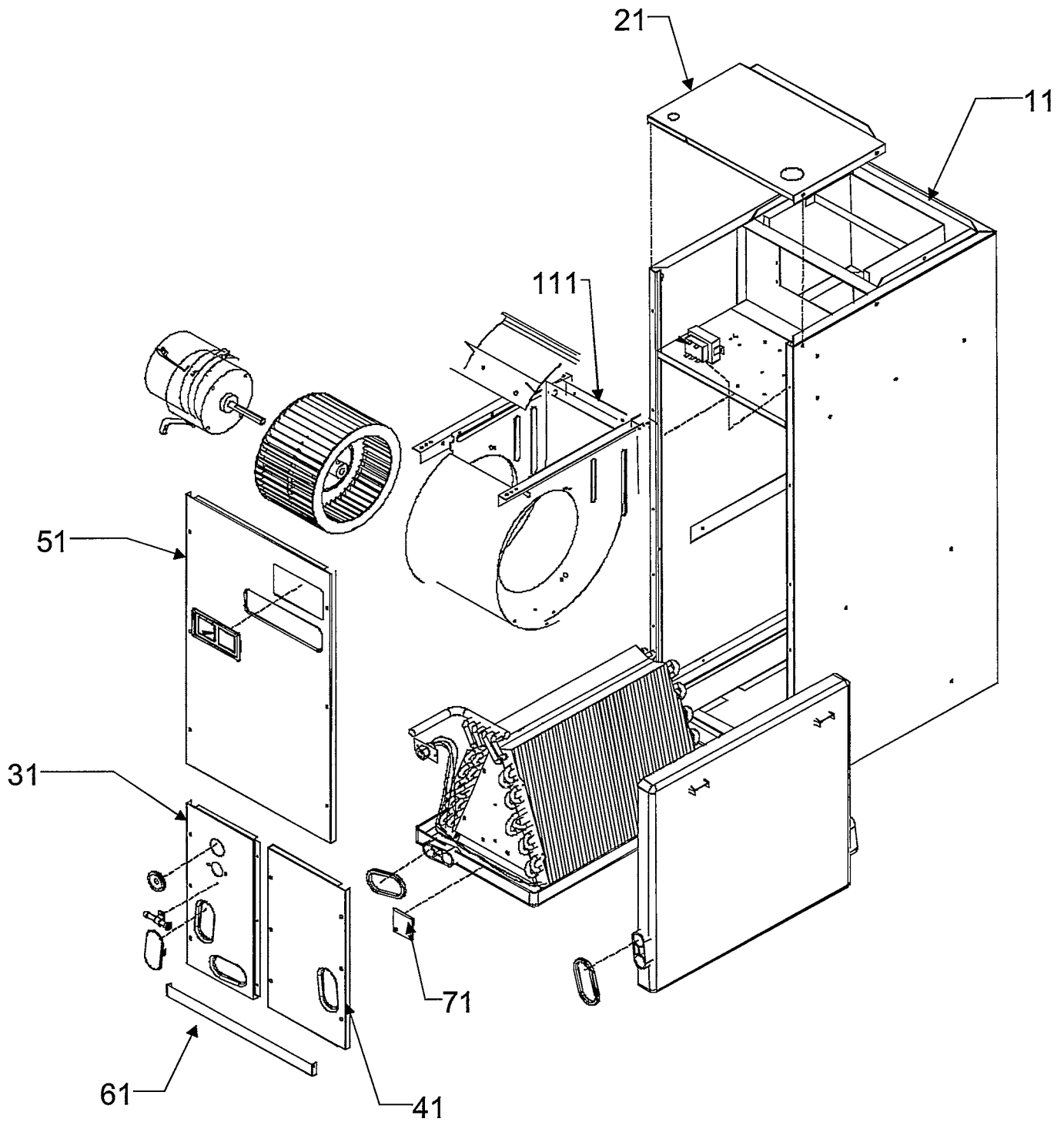
SPECIAL PARTS

IO-230A	I & O MANUAL
PW-316	PRODUCT WARRANTY
RP-298A	REPAIR PARTS MANUAL

Expanded Model and Color Nomenclature

M1 - AEPT030-00A-1
M2 - AEPT030-00C-1
M3 - AEPT036-00A-1
M4 - AEPT036-00C-1
M5 - AEPT060-00A-1
M6 - AEPT060-00C-1

Cabinet



Cabinet

Ref. Part

No: No:

Description:

Ref. Part

No: No:

Description:

Image 1:

11	1721123P	WRAPPER CABINET (LARGE) (M3, M4, M5, M6)
11	1721122P	WRAPPER CABINET (MEDIUM) (M1, M2)
21	1721929P	PLATE, UPPER TIE (M1, M2)
21	1721930P	PLATE, UPPER TIE (M3, M4, M5, M6)
31	1722077P	PANEL, LOWER ACCESS (M1, M2)
31	1722078P	PANEL, LOWER ACCESS (M3, M4, M5, M6)
41	1722080P	SERVICE PANEL, LOWER (M1, M2)
41	1722081P	SERVICE PANEL, LOWER (M3, M4, M5, M6)
51	1722083P	PANEL, UPPER ACCESS (M1, M2)
51	1722084P	PANEL, UPPER ACCESS (M3, M4, M5, M6)
61	1722086P	FILTER COVER (M1, M2)
61	1722087P	FILTER COVER (M3, M4, M5, M6)
71	1722347	BRACKET, COIL RETAINING (HOLD DOWN)
111	1717109	ANGLE BRACKET

Expanded Model Nomenclature

M1 - AEPT030-00A-1

M2 - AEPT030-00C-1

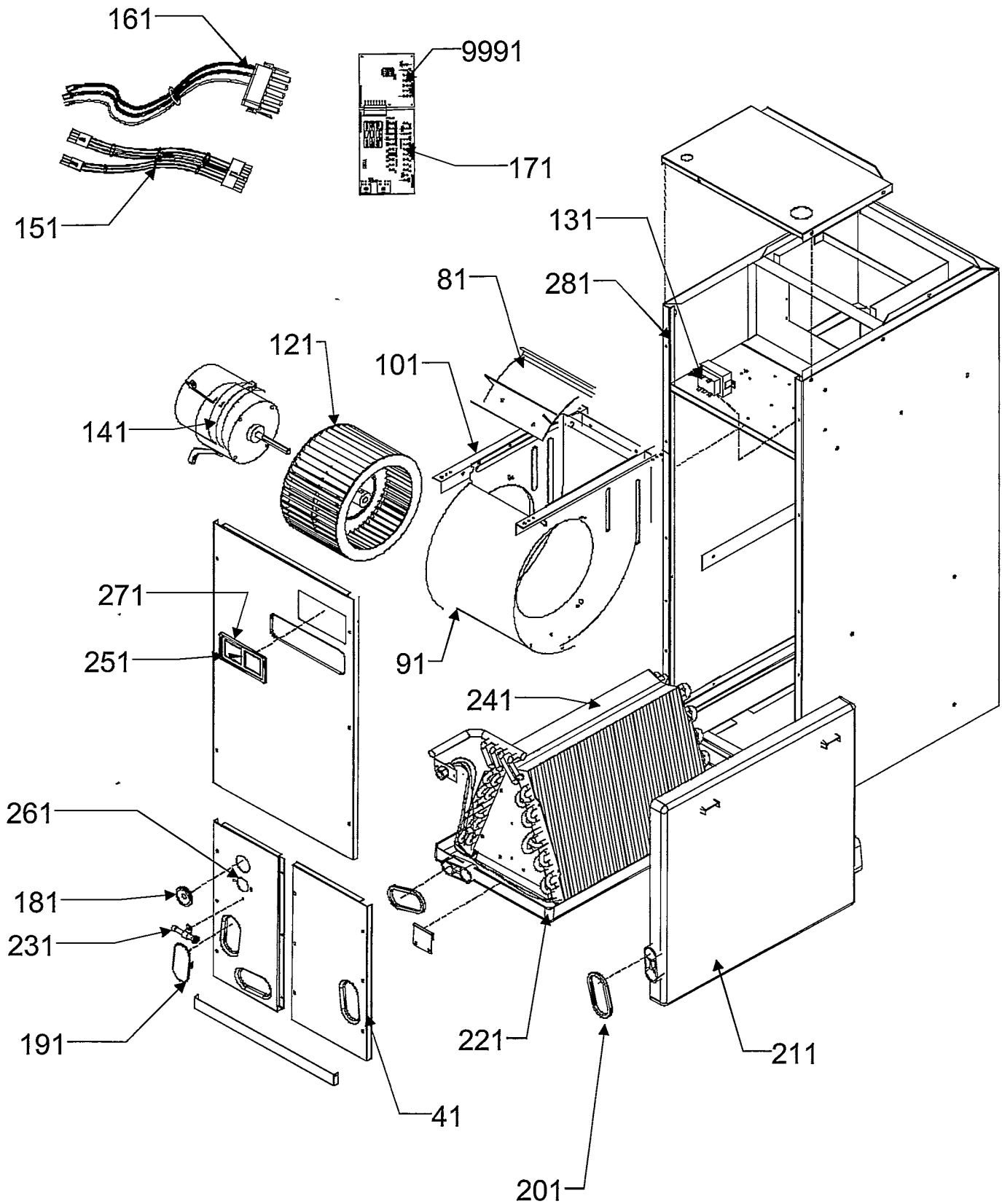
M3 - AEPT036-00A-1

M4 - AEPT036-00C-1

M5 - AEPT060-00A-1

M6 - AEPT060-00C-1

Internal Components



Internal Components

Ref. Part No:	Ref. Part No:	Description:	Description:
Page 1:			
81	764734	BLOWER CUT-OFF (M1, M2)	
81	1864700	BLOWER CUT-OFF (10 X 10) (M3, M4, M5, M6)	
91	1439392	BLOWER SHELL (9 X 8) (M1, M2)	
91	1439397	BLOWER SHELL (10 X 10) (M3, M4, M5, M6)	
101	1717107	BLOWER MOUNTING ANGLE (QTY 2)	
121	B1368037	BLOWER WHEEL (9 X 8) (M1, M2)	
121	B1368048	BLOWER WHEEL (10 X 10) (M3, M4, M5, M6)	
131	B1141643	TRANSFORMER, 208/230 PRI. TO 24V SEC.	
141	B13400702AB	MOTOR, VAR. SPEED, 1/2 HP W/CONTROLLER (M1, M2)	
141	B13400704AB	MOTOR, VAR. SPEED, 3/4 HP W/CONTROLLER (M3, M4, M5, M6)	
151	B1378700	LOW VOLTAGE WIRING HARNESS	
161	B1378701	HIGH VOLTAGE WIRING HARNESS	
171	B1368270	ECM BOARD, PRIMARY	
181	B1392630	GROMMET, TUBING (M1, M3, M5)	
181	B1910012	GROMMET, TUBING (M2, M4, M6)	
191	B1392640	PLASTIC COVER, DRAIN HOLE (M1, M2, M4, M5, M6)	
201	B1392631	GASKET, DRAIN PAN	
211	B1756022I	HORIZONTAL DRAIN PAN (M1, M2)	
211	B1756028I	HORIZONTAL DRAIN PAN (M3, M4, M5, M6)	
221	B1756017I	VERTICAL DRAIN PAN (M1, M2)	
221	B1756020L	VERTICAL DRAIN PAN (M3, M4, M5, M6)	
231	B1796630	TUBE, INLET (FLOWRATOR)	
241	12624-03	SERVICE EVAP COIL ASM (M1, M2)	
241	12624-04	SERVICE EVAP COIL ASM (M3, M4)	
241	12624-05	SERVICE EVAP COIL ASM (M5, M6)	
251	B1392641	PLASTIC BREAKER, INSERT	
261	B13926121	FLOWRATOR GASKET (M2, M4, M6)	
271	B13926122	BREAKER INSERT GASKET (M2, M4, M6)	
281	B13926123	NEOPRENE GASKET (ACCESS DOORS) (M2, M4, M6)	
		This gasket come on a roll of 50 ft.	
NS	B1796632	TEFLON AND NUT ASM	
NS	B1796631	TEFLON SEAL (20 IN A PACK)	
NS	B3232213	TXV24-42 (M1, M2)	
NS	B3232214	TXV48-61 (M3, M4, M5, M6)	

Expanded Model Nomenclature

- M1 - AEPT030-00A-1
- M2 - AEPT030-00C-1
- M3 - AEPT036-00A-1
- M4 - AEPT036-00C-1
- M5 - AEPT060-00A-1
- M6 - AEPT060-00C-1