

IO - 615 Installation Instructions

HKR Circuit Breaker Kit

Description

These installation instructions are for installing the following three HKR Circuit Breaker Kits:

B1753510S HKR Circuit Breaker Kit (30 amps)

B1753511S HKR Circuit Breaker Kit (60 amps)

B1753517S HKR Circuit Breaker Kit (40 amps)

These kits contain the following parts: G.E. Circuit Breakers, Mounting Bracket and Installation Instructions.



WARNING

To avoid death, personal injury or property damage due to electrical shock, disconnect the electrical power supply before servicing this unit. Some models will have two power sources be certain to disconnect both power sources. This may include the indoor unit as well as the outdoor unit.

Note: If using power tools of any kind to remove the small breaker mounting brackets, use extreme caution. The brackets may quickly rotate and cause injury.

Installation Procedures

1. Disconnect all power to the unit, both indoor and outdoor.
2. To replace circuit breakers in AR/AER airhandlers with HKR heater kits already installed, the upper access panel must be removed.
Note: When changing wires from the existing circuit breaker to the new circuit breaker, it may be necessary to use needle nose pliers.
3. Remove one wire at a time from the existing circuit breaker and locate on the same connection of the new circuit breaker being installed. Proceed with this process on all circuit breaker wires. Use the wiring diagram provided on HKR Heater Kit to make sure the wiring is correct.

Note: If G.E. circuit breakers are being replaced, 10753603 mounting bracket provided in the kit can be discarded.

4. Unfasten the two # 10x $\frac{1}{2}$ " screws and remove one 1753603 mounting bracket at the top of the breaker as shown in Figure 1. Slide the existing G.E. breaker off the bottom bracket and then slide the new G.E. breaker onto the bottom bracket. Reassemble 1753603 mounting bracket to the top of the breaker and refasten with the two # 10x $\frac{1}{2}$ " screws.
5. If Siemens circuit breakers are being replaced with a HKR Circuit Breaker Kit, remove both the top and bottom mounting brackets 1753602 and 1753603 by removing the two # 10x $\frac{1}{2}$ " screws per mounting bracket that secure them to the mounting plate. Mounting bracket 1753602 is not used with the G.E. circuit breakers used in HKR Kits and can be discarded.



RECOGNIZE THIS SYMBOL AS A SAFETY PRECAUTION

ATTENTION INSTALLING PERSONNEL

As a professional installer you have an obligation to know the product better than the customer. This includes all safety precautions and related items.

Prior to actual installation, thoroughly familiarize yourself with this Instruction Manual. Pay special attention to all safety warnings. Often during installation or repair it is possible to place yourself in a position which is more hazardous than when the unit is in operation.

Remember, it is your responsibility to install the

product safely and to know it well enough to be able to instruct a customer in its safe use.

Safety is a matter of common sense...a matter of thinking before acting. Most dealers have a list of specific good safety practices...follow them.

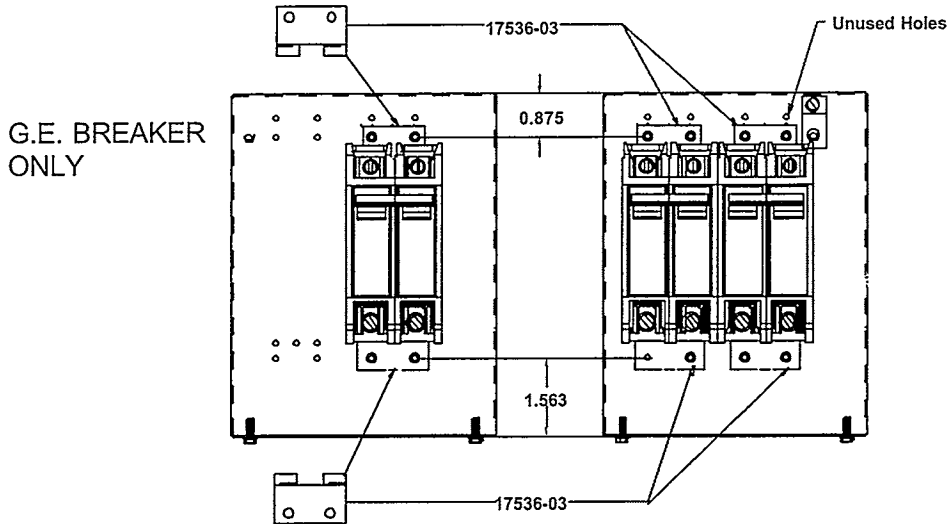
The precautions listed in this Installation Manual are intended as supplemental to existing practices. However, if there is a direct conflict between existing practices and the content of this manual, the precautions listed here take precedence.

6. Relocate 1753603 mounting bracket at dimension (1.563") from the bottom of the circuit breaker plate as shown in Figure 2 and fasten with two of the # 10x½" screws that were previously removed in Step 5. Slide the G.E. circuit breaker onto the bottom bracket flanges. Next, insert the mounting bracket 1753603 that was provided in the kit at dimension (.875") from the top of the circuit breaker plate as shown in Figure 2 and fasten with two of the # 10x½" screws that were previously removed in Step 5 .

7. To ensure the G.E. circuit breaker is assembled in the correct location, there must be two unused holes seen at the top of the mounting bracket as shown in Figure 3.

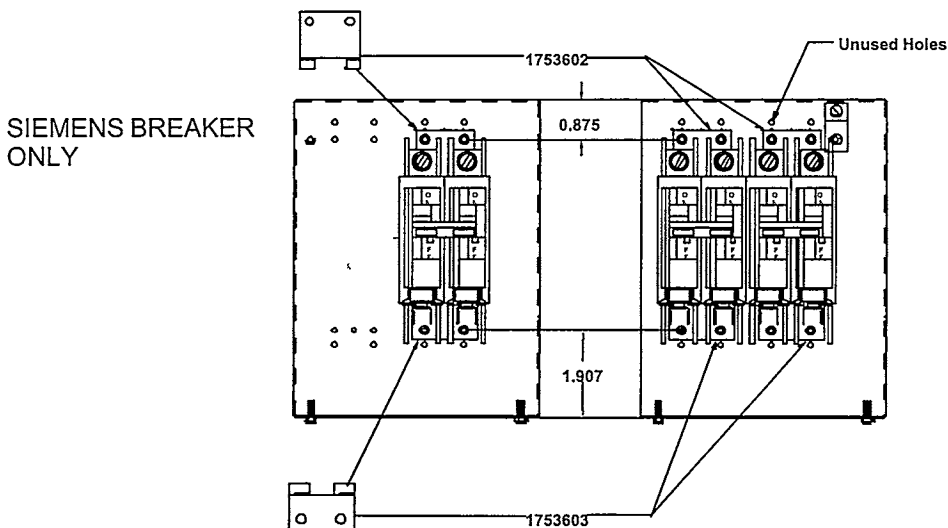
Note: If the G.E. circuit breaker is not located in the correct position, the breaker will not line up with the breaker window on the access panel.

8. Reinstall the upper access panel on the airhandler.
9. Restore power to unit. Set the thermostat to call for electric heat mode of operation.
10. Verify system is functioning correctly.



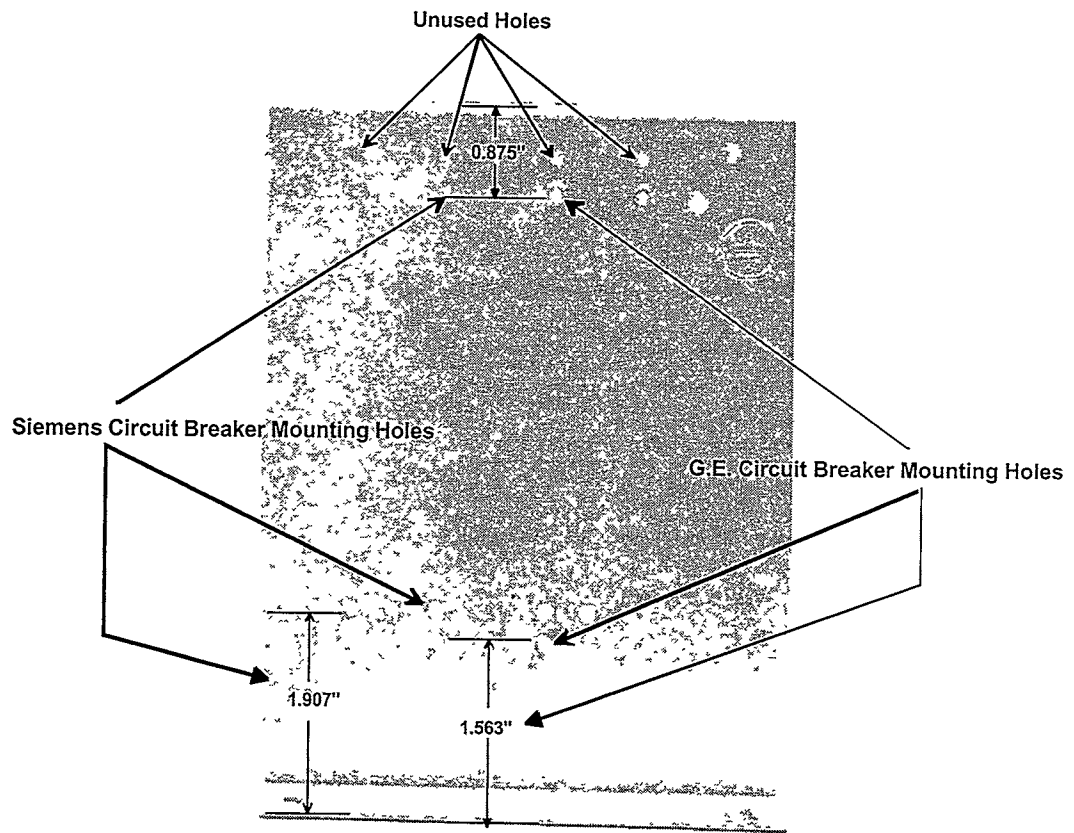
Proper Orientation for "HKR" Heat Kits Using G.E. Circuit Breakers

Figure 1



Proper Orientation for "HKR" Heat Kits Using Siemens Circuit Breakers

Figure 2



**Breaker Mounting Plate for
AR/AER Airhandlers**

Figure 3