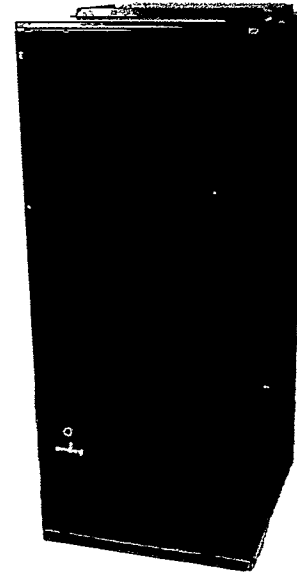


ARUF SERIES

Multi-position
Air Handler

1½ to 5 Ton



The ARUF multi-position air handler is approved for modular homes and may be installed in a utility room, closet, alcove, basement or attic.

Standard Features

- Direct-drive, multi-speed motor allows air volume variation for heating/cooling application needs
- Multi-position (upflow/horizontal or downflow) air handler
- Equipped with a check flowrater for cooling and heat pump applications
- Built-in coil with horizontal and vertical thermoplastic drain pans and secondary drains
- Copper tube/aluminum fin coil
- Power supply entry at top
- Low-voltage entry on left side and top
- Transformer and blower time delay on all units
- Built-in filter rack for 1" filter (filter not included)

Cabinet Construction

- Fully insulated steel cabinet
- Rust-resistant, galvanized cabinet

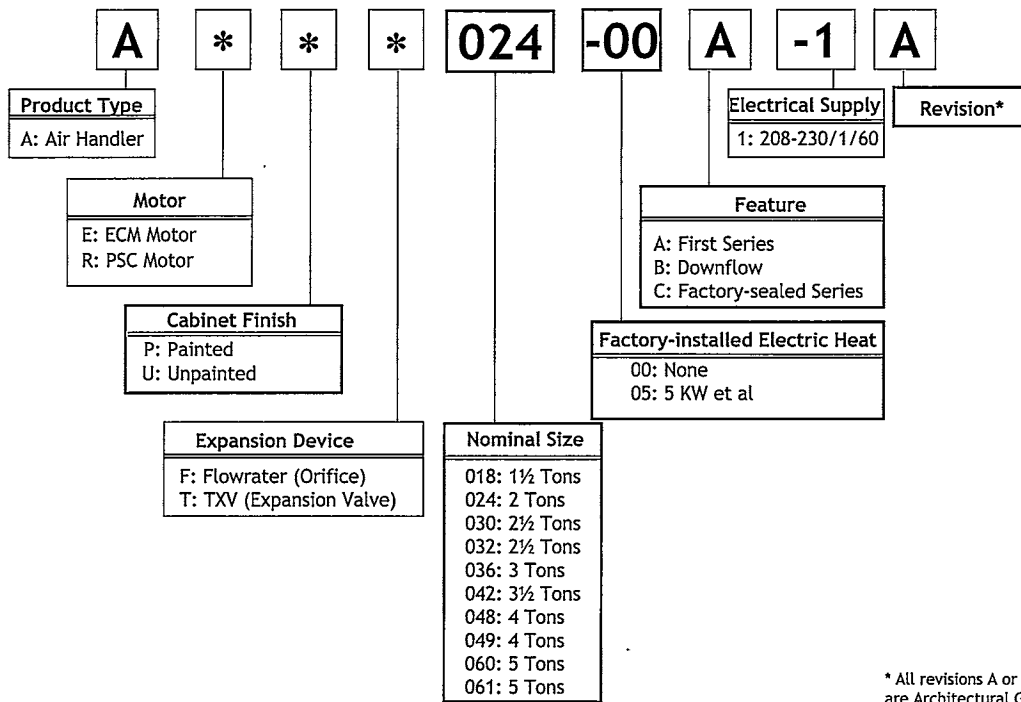
Accessories

- Pre-tested, pre-wired, field-installed electric heat kits in 5 to 20 kW (single-phase models); 15 and 20kW (3-phase models)
- Features electric heat limit control, rust-resistant nickel chromium heating elements and select models having circuit breakers
- Permanent washable plastic air filters (FIL18-32, FIL36-42, FIL48-61)
- Thermal Expansion Valve Kits for air conditioning-only applications
- Coil Insulation Kit for downflow applications



PRODUCT SPECIFICATIONS

Nomenclature



Specifications

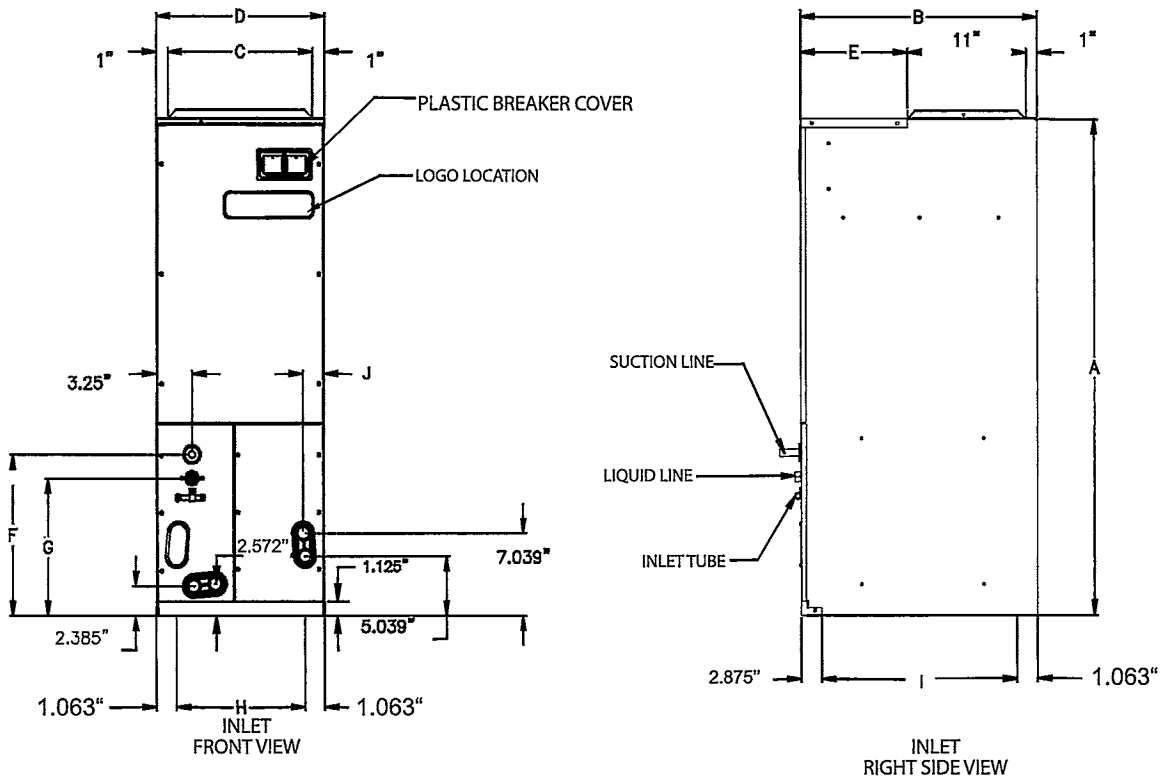
Model	Blower		Coil Drain Connection FPT	Service Valve		Approximate Shipping Weight (pounds)
	Diameter	Width		Liquid	Suction	
ARUF018-00A-1/-1A	8"	6"	3/4"	3/8"	5/8"	105
ARUF024-00A-1/-1A	9½"	6"	3/4"	3/8"	3/4"	106
ARUF030-00A-1/-1A	9½"	6"	3/4"	3/8"	3/4"	113
ARUF032-00A-1/-1A/-1B	9½"	6"	3/4"	3/8"	3/4"	120
ARUF036-00A-1/-1A	9½"	8"	3/4"	3/8"	3/4"	141
ARUF042-00A-1/-1A	9½"	8"	3/4"	3/8"	3/4"	144
ARUF048-00A-1/-1A	9½"	8"	3/4"	3/8"	7/8"	173
ARUF049-00A-1/-1A	9½"	8"	3/4"	3/8"	7/8"	173
ARUF060-00A-1/-1A	10⅝"	10⅝"	3/4"	3/8"	7/8"	192
ARUF061-00A-1/-1A	10⅝"	10⅝"	3/4"	3/8"	7/8"	192

Electrical Data

Model	Single Supply Circuit		Minimum VAC	Maximum VAC	Blower Motor	
	Minimum Circuit Ampacity @ 208/240V	Maximum Overcurrent Protection @ 208/240V (amps)			FLA	HP
ARUF024-00A-1/-1A	1.9/1.9	15/15	197	253	1.5	1/5
ARUF030-00A-1/-1A	2.4/2.4	15/15	197	253	1.95	1/3
ARUF032-00A-1/-1A/-1B	2.4/2.4	15/15	197	253	1.95	1/3
ARUF036-00A-1/-1A	2.7/2.7	15/15	197	253	2.15	1/3
ARUF042-00A-1/-1A	2.8/2.8	15/15	197	253	2.2	1/2
ARUF048-00A-1/-1A	3.3/3.3	15/15	197	253	2.6	1/2
ARUF049-00A-1/-1A	3.3/3.3	15/15	197	253	2.6	1/2
ARUF060-00A-1/-1A	4.9/4.9	15/15	197	253	3.9	3/4

PRODUCT SPECIFICATIONS

Dimensions



Model	A	B	C	D	E	F	G	H	I	J
ARUF018-00A-1/-1A	42.125"	22"	13.5"	15.5"	10"	14.5"	11.935"	13.125"	17.938"	2.024"
ARUF024-00A-1/-1A	42.125"	22"	13.5"	15.5"	10"	14.5"	11.935"	13.125"	17.938"	2.024"
ARUF030-00A-1/-1A	42.125"	22"	13.5"	15.5"	10"	14.5"	11.935"	13.125"	17.938"	2.024"
ARUF032-00A-1/-1A/-1B	42.125"	22"	13.5"	15.5"	10"	14.5"	11.935"	13.125"	17.938"	2.024"
ARUF036-00A-1/-1A	46.75"	22"	17.5"	19.5"	10"	14.5"	11.935"	17.125"	17.938"	2.024"
ARUF042-00A-1/-1A	46.75"	22"	17.5"	19.5"	10"	14.5"	11.935"	17.125"	17.938"	2.024"
ARUF048-00A-1/-1A	53.25"	24"	20"	22"	12"	14.5"	11.935"	19.625"	17.938"	2.024"
ARUF049-00A-1/-1A	53.25"	24"	20"	22"	12"	14.5"	11.935"	19.625"	19.938"	1.837"
ARUF060-00A-1/-1A	53.25"	24"	20"	22"	12"	14.5"	11.935"	19.625"	19.938"	1.837"
ARUF061-00A-1/-1A	53.25"	24"	20"	22"	12"	14.5"	11.935"	19.625"	19.938"	1.837"

Blower Performance

Model	Speed	CFM Delivered Against External Static Pressure (inches water)				
		0.1"	0.2"	0.3"	0.4"	0.5"
ARUF018-00A-1/-1A	High/Low	700/674	630/600	580/545	530/490	490/380
ARUF024-00A-1/-1A	High/Low	1,056/935	1,020/910	980/880	920/850	870/790
ARUF030-00A-1/-1A	High/Low	1,150/1,060	1,110/1,040	1,040/980	980/910	920/860
ARUF032-00A-1/-1A	High/Low	1,150/1,060	1,110/1,040	1,040/980	980/910	920/860
ARUF032-00A-1B	High/Medium/Low	1,150/870/640	1,090/830/610	1,020/790/570	950/750/530	900/710/490
ARUF036-00A-1/-1A	High/Low	1,549/1,322	1,470/1,310	1,420/1,280	1,360/1,320	1,290/1,150
ARUF042-00A-1/-1A	High/Low	1,586/1,524	1,530/1,490	1,470/1,420	1,410/1,370	1,350/1,175
ARUF048-00A-1/-1A	High/Low	1,670/1,580	1,610/1,520	1,530/1,470	1,470/1,410	1,390/1,340
ARUF049-00A-1/-1A	High/Low	1,670/1,580	1,610/1,520	1,530/1,470	1,470/1,410	1,390/1,340
ARUF060-00A-1/-1A	High/Low	2,170/1,900	2,080/1,810	2,000/1,780	1,920/1,710	1,850/1,630
ARUF061-00A-1/-1A	High/Low	2,170/1,900	2,080/1,810	2,000/1,780	1,920/1,710	1,850/1,630

Dry coil with Filter in Place

SCFM Correction for Wet Coil – 4%

PRODUCT SPECIFICATIONS

Heat Kit Applications

	ARUF018-00A-1/-1A	ARUF024-00A-1/-1A	ARUF030-00A-1/-1A	ARUF032-00A-1/-1A	ARUF032-00A-1B	ARUF036-00A-1/-1A	ARUF042-00A-1/-1A	ARUF048-00A-1/-1A	ARUF049-00A-1/-1A	ARUF060-00A-1/-1A	ARUF061-00A-1/-1A
HKR-03	X	X	X	X	X	X	X	X	X	X	X
HKR-05(c)	X	X	X	X	X	X	X	X	X	X	X
HKR-06	X	X	X	X	X	X	X	X	X	X	X
HKR-08(c)	X	X	X	X	X	X	X	X	X	X	X
HKR-10(c)		X	X	X	X+	X	X	X	X	X	X
HKR-15(c)			X	X	X†	X	X	X	X	X	X
HKR-20(c)						X	X	X	X	X	X
HKR-21(c)						X	X	X	X	X	X
HKR3-15*						X	X	X	X	X	X
HKR3-20*						X	X	X	X	X	X

(c) Circuit breakers optional

* Heat Kit requires 3-phase power supply

+ When using a 10 kW heat kit, this air handler must either be in medium or high speed.

† When using a 15 kW heat kit, this air handler must be on high speed.

Expansion Valve Kits For Air Conditioning-only Applications

Kit Number	Used With	Description
XVB18-36C	ARUF018 to ARUF036	20% bleed valve
XVB42-60C	ARUF042 to ARUF060	20% bleed valve
XV18-36C	ARUF018 to ARUF036	Non-bleed valve
XV42-60C	ARUF042 to ARUF060	Non-bleed valve

Coil Insulation Kit For Downflow Applications

Chassis Size	Insulation Kit
Small	DPI18-30/20
Medium	DPI36-42/20
Large	DPI48-60/20

Note: Each kit contains enough material to modify 20 coils



Goodman Manufacturing Company, L.P., reserves the right to discontinue, or change at any time, specifications or designs without notice or without incurring obligations.
Copyright © 2004 Goodman Manufacturing Company, L.P. • Houston, Texas • Printed in the USA. • Goodman® brand products are made proudly in the USA.