

Ideal for both **single** and **multiple room** applications

Cool multiple rooms

from a single closet



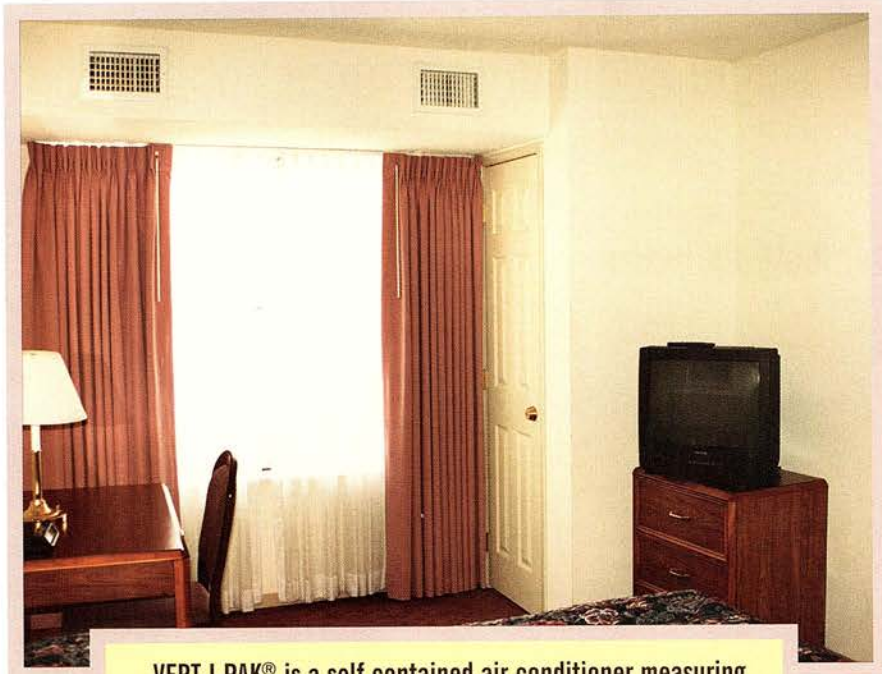
NEW digital thermostat

Friedrich[®]

VERT-I-PAK[®]

Single Package Vertical Air Conditioners

Single package vertical air conditioners



VERT-I-PAK® is a self contained air conditioner measuring 23 1/8" x 23 1/8" x 32 1/4" H. It installs into a small closet.

a unique product

VERT-I-PAK® is a self contained air conditioner measuring 23 1/8" x 23 1/8" x 32 1/4" H. The unit receives fresh air and discharges air through a 31 1/16" H x 25 9/16" W architectural louver mounted in the outside wall and attached to the unit with an adjustable wall plenum. Standard 10" ductwork attaches to the top of the unit and runs through prebuilt soffits. Multiple diffusers can be placed as required.

Heat pumps and heat/cool units are available in 9,000, 12,000 and 18,000 BTU capacities with 2.5 KW, 3.4 KW and 5.0 KW electric heat options.

VERT-I-PAK® is also available in cooling only configurations.

VERT-I-PAK® is designed for quick installation. The unit can be placed in a small closet on either side of the room. An access panel or door allows for easy maintenance or removal of the unit. And since VERT-I-PAK® is a self contained unit, certified HVAC technicians are not required for installation and basic maintenance.



applications

- **Hotels/Motels**
 - Single rooms
 - Suites
- **Multi-family Residential**
 - Apartments
 - Town Houses
 - Condominiums
- **Retirement Communities**
- **Assisted Living Communities**
- **Modular Housing**
- **Portable School Buildings**

VERT-I-PAK® comes equipped with:

- 230/ 208V power cord
- 2 speed fan
- Single direct drive motor for ultra-quiet operation
- Compressor restart protection (5 minute delay)
- Slinger ring condenser fan for maximum condensate disposal and energy efficiency
- Cooling mode freeze protection
- Adjustable left or right drain connections
- Remote thermostat-ready 24V transformer
- Quick-release power disconnect
- Sound insulation package
- Seacoast protected coils available

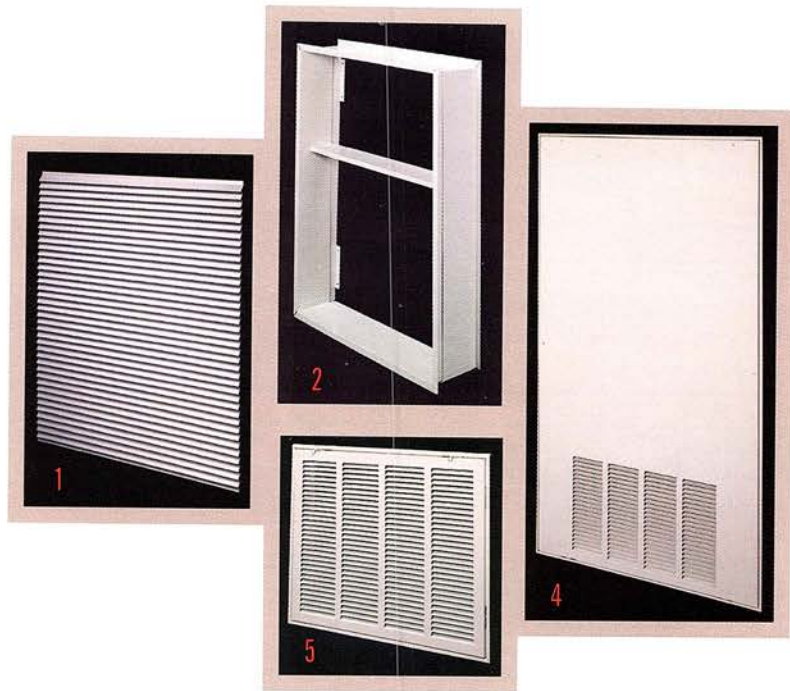
accessories

a superior choice over split systems or multiple PTACs

- Far more cost effective than split systems or multiple PTACs
- No outside condensing units, eliminating the need for landscaping and vandalism barriers
- No refrigerant lines running from floor to floor
- Far quieter than PTAC units
- No need for costly finished wall sleeves, wiring kits or decorative fronts
- Rustproof, polystyrene drain pan, shroud and condenser fan
- Long-life ball bearing motor



Typical closet installation



1 ARCHITECTURAL LOUVER • VPAL1

Extruded aluminum grille that attaches to the outdoor section of the wall plenum. Takes in fresh air and returns condensed air. Can be ordered in custom colors.

Dimensions: 25 9/16" W x 31 1/16" H

2 WALL PLENUM • VPWP1, VPWP2

Two-part sleeve that telescopes in and out. Sits inside the exterior wall penetration.

VPWP1 telescopes from 4 1/2"–8"

VPWP2 telescopes from 8"–14"

Dimensions: 24 1/8" W x 30 3/8" H

Cutout dimensions: 24 5/8" W x 30 7/8" H

3 SINGLE STAGE THERMOSTAT • VPRT 5

Honeywell 24 Volt wall mounted thermostat. (Single stage heat and cool). 24 Volt transformer is factory installed into all chassis.



4 RETURN AIR GRILLE/ ACCESS PANEL • VPRG1

Serves as an access panel to the chassis and interior return air grille. A field-supplied filter (12" x 20") is mounted inside the grille.

Dimensions: 30" W x 50" H

Cutout dimensions: 28 1/4" W x 48 1/4" H

5 RETURN AIR GRILLE • VPRG2

Interior return air grille that hinges to allow a field-supplied (16" x 20") filter to slip inside. Used when an access door/ panel already exists in closet.

Dimensions: 22 3/8" W x 18 7/16" H

Cutout dimensions: 20 1/2" W x 16 1/2" H

6 FILTER BRACKETS • VPFB 1

Brackets allow field-supplied (16" x 20") filter to be attached directly to the unit's chassis. (See typical closet installation photo at left.)



VERT-I-PAK® Chassis Specifications

MODELS:	V(E,H)A09K25	V(E,H)A09K34	V(E,H)A09K50	V(E,H)A12K25	V(E,H)A12K34	V(E,H)A12K50	V(E,H)A18K25	V(E,H)A18K34	V(E,H)A18K50
C O O L I N G D A T A :									
Cooling Cap. (Btu/h)	9500/9300	9500/9300	9500/9300	11500/11300	11500/11300	11500/11300	17200/17000	17200/17000	17200/17000
Cooling Power (W)	950	950	950	1200	1200	1200	1911	1911	1911
SEER	10.0	10.0	10.0	10.0	10.0	10.0	10.0	10.0	10.0
Water Removal (Pts/h)	2.1	2.1	2.1	2.8	2.8	2.8	4.0	4.0	4.0
Cooling SHR	0.77	0.77	0.77	0.76	0.76	0.76	0.75	0.75	0.75
E L E C T R I C H E A T D A T A :									
Heater Size (KW)	2.5	3.4	5.0	2.5	3.4	5.0	2.5	3.4	5.0
Heating Cap.(Btu/h)	8500/7000	11600/9500	17000/13900	8500/7000	11600/9500	17000/13900	8500/7000	11600/9500	17000/13900
Heating Power (W)	2500/2050	3500/2780	5000/4090	2500/2050	3500/2780	5000/4520	2500/2050	3500/2780	5000/4520
Heating Current (A)	11.9/11.2	15.9/14.6	22.6/20.6	11.9/11.2	15.9/14.6	22.6/20.6	11.9/11.2	15.9/14.6	22.6/20.6
H E A T P U M P D A T A :									
Heating Cap.(Btu/h)	8000/7800	8000/7800	8000/7800	11200/11000	11200/11000	11200/11000	15700/15500	15700/15500	15700/15500
Heating Power (W)	950	950	950	1200	1200	1200	1830	1830	1830
Heating Current (A)	4.4/4.9	4.4/4.9	4.4/4.9	5.2/6.0	5.2/6.0	5.2/6.0	9.0/10.0	9.0/10.0	9.0/10.0
COP @ 47°F	3.0	3.0	3.0	3.0	3.0	3.0	2.4	2.4	2.4
E L E C T R I C A L D A T A :									
Voltage (V)	230/208	230/208	230/208	230/208	230/208	230/208	230/208	230/208	230/208
LRA - Comp. (A)	20	20	20	26.3	26.3	26.3	45	45	45
Cooling Current (A)	4.4/4.9	4.4/4.9	4.4/4.9	5.2/6.0	5.2/6.0	5.2/6.0	7.6	7.6	7.6
MIN. Ckt. Amps (A)	15	20	30	15	20	30	15	20	30
Power Connection	POWER CORD			POWER CORD			POWER CORD WITH OPTION TO HARD WIRE		
P H Y S I C A L D A T A :									
Refrigerant	R-22	R-22	R-22	R-22	R-22	R-22	R-22	R-22	R-22
Unit Width (in.)	23.125	23.125	23.125	23.125	23.125	23.125	23.125	23.125	23.125
Unit Depth (in.)	23.125	23.125	23.125	23.125	23.125	23.125	23.125	23.125	23.125
Unit Height* (in.)	32.25	32.25	32.25	32.25	32.25	32.25	32.25	32.25	32.25
Shipping Weight (lbs.)	125	125	125	135	135	135	155	155	155
A I R F L O W D A T A :									
Indoor CFM **	300	300	300	375	375	375	550	550	550
Fresh Air CFM**	60	60	60	60	60	60	60	60	60
Motor	230V, 1/4 HP	230V, 1/4 HP	230V, 1/4 HP	230V, 1/4 HP	230V, 1/4 HP	230V, 1/4 HP	230V, 1/4 HP	230V, 1/4 HP	230V, 1/4 HP
Motor Amps**	1.4	1.4	1.4	1.4	1.4	1.4	1.4	1.4	1.4

*Height includes 2" high duct collar and 5/8" isolators under unit.

**Normal Value Dry Coil on High Speed @ .3" ESP.

Due to continuing research in new energy-saving technology, specifications are subject to change without notice.

Capacity rated at standard conditions:

COOLING-

95°F DB/75°F WB outdoor, 80°F DB/67°F WB indoor

HEATING- (reverse cycle)

47°F DB/43°F WB outdoor, 70°F DB/60°F WB indoor



Friedrich®

Friedrich Air Conditioning Co.
P.O. Box 1540 • San Antonio, Texas 78295-1540
PHONE 210/357-4400 FAX 210/357-4480

Visit us on the web @www.friedrich.com

VERT-I-PAK 00

Printed in USA

Friedrich®

18,000 – 48,000 BTU/h

UpFlow Packaged Heating & Cooling System

VERT-I-PAK® enhances your property with the latest in energy operations and conservation, while providing your tenants and guests with a safe, quiet and comfortable living environment.

- Lowers installation cost
- Totally concealed in a mechanical closet located anywhere within the structure
- No refrigerant piping to connect, one completely self-contained indoor system
- Less costly and easier maintenance compared to split systems
- Provides individual metering of heating and cooling
- Heating and cooling in one indoor unit
- Heat pumps and electric heat available
- Total installed cost of VERT-I-PAK® is approximately 50% of the installed cost of water source heat pumps
- Save up to 50% on operating costs over electric resistance heat
- Eliminates vandalism and theft of outdoor condensing units
- Ultra-quiet operation

Designed specifically for the multifamily housing and lodging industries, VERT-I-PAK® provides a unique and cost-effective alternative to split systems in these applications:

Extended stay properties and suites
Renovations
Rehabs
Garden style apartments
Mid-rise and high rise apartments
Assisted living facilities
Schools, classrooms and dormitories



VERT-I-PAK®

VERT-I-PAK® Features



- Safe for heating and cooling in a single indoor unit
- Energy-efficient (up to 10.0 SEER)
- Cost-effective design
- Copeland Compliant Scroll® compressor
- 100% factory tested; 64 quality checks
- Active defrost allowing for operation below 32° F
- All units are pre-charged, wired and piped
- Service valves are easily accessed
- Controlled by remote wall mounted thermostat
- Installation accessories available
- Shipped with filter installed

OTHER MODELS AVAILABLE

- Hydronics
- Smaller footprints
- Cooling only
- A choice of multiple air intake and exhaust configurations

MODEL	V(E,H)BK18	V(E,H)BK24	V(E,H)BK30	V(E,H)BK36	V(E,H)BK42	V(E,H)BK48
PERFORMANCE DATA:						
Cooling Cap. (Btu/h)	17,000	22,000	30,000	35,000	43,000	48,000
High Temp Heating Cap.(Btu/h)	17,000	22,000	30,000	34,000	40,000	47,000
SEER	10.0	10.0	10.0	10.0	9.8	9.7
Outdoor Blower (CFM)	1,300	1,300	1,400	1,590	1,900	1,900
Outdoor Blower (HP)	1/3	1/3	1/3	1/2	3/4	3/4
Outdoor Blower (E.S.P.)	.20	.20	.20	.20	.25	.25
Indoor Blower (CFM)	650	800	1,000	1,150	1,400	1,400
Indoor Blower (HP)	1/6	1/6	1/4	1/3	1/2	1/2
Outdoor Blower (E.S.P.)	.15	.15	.15	.15	.25	.25
Heater Size (KW)	5, 10	5, 10	10, 15	10, 15	10, 15	15, 20
High Temp COP	3.2	3.4	3.2	3.0	3.0	3.0
ELECTRICAL DATA:						
Voltage / Hertz/ Phase	208-230/60/2	208-230/60/2	208-230/60/2	208-230/60/2	208-230/60/2	208-230/60/2
Minimum circuit ampacity -Heat pump only	14.0	16.7	22.8	27.9	33.0	40.5
Power Connection	Hard wired	Hard wired	Hard wired	Hard wired	Hard wired	Hard wired
PHYSICAL DATA:						
Unit Width (in.)	30	30	30	30	38	38
Unit Depth (in.)	21	21	21	21	28	28
Unit Height* (in.)	68	68	68	68	68	68
Shipping Weight (lbs.)	320	320	330	340	440	460

Capacity rated at standard conditions:

Cooling Standard: 80° F db, 67° F wb indoor entering air temperature 95° F db air entering the outdoor coil.
 Hi-Temp Heating Standard: 70° F db indoor entering air temperature 47° F db, 43° F wb air entering the outdoor coil.
 Lo-Temp Heating Standard: 70° F db indoor entering air temperature 17° F db, 15° F wb air entering the outdoor coil.

Due to continuing research in new energy saving technology, specifications are subject to change without notice..



Friedrich Air Conditioning Co.
 P.O. Box 1540
 San Antonio, Texas 78295-1540
 Phone: 1-800-541-6645
 Fax: 1-210-357-4480
 www.friedrich.com



VPAK upflow 00

Printed in USA