

# **SYSTEM MANAGER-10**

*MICRO PROCESSOR BASED*

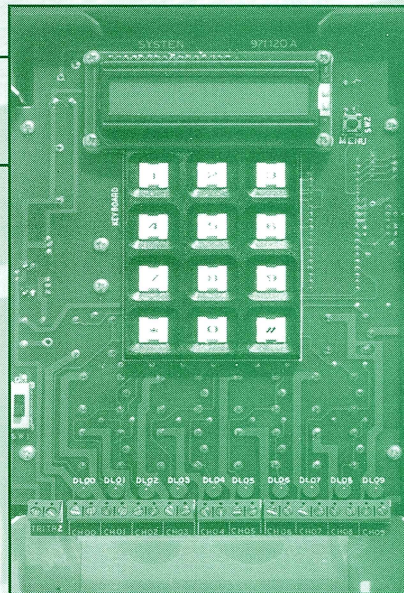
## **10 CHANNEL BUILDING CONTROL SYSTEM**

**EXHAUST FANS**

**HVAC  
EQUIPMENT**

**PARKING  
LOT LIGHTS**

**INDOOR  
LIGHTS**



**Optional**

**Windows 95-98 remote  
monitoring software  
now available.**

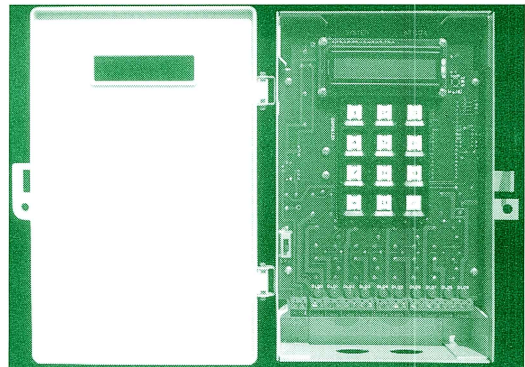
- ~ Avoid multiple time clocks. SYSTEM MANAGER-10 provides 10 channel capability in any commercial application.**
- ~ Control multiple roof top units from one 365 day clock**
- ~ Zoned controlled systems and stand alone roof tops**
- ~ Control parking lot lights - inside lights - HVAC systems - SELECT-TEMP, SYSTEM 1000 and SYSTEM 2000 zoning systems - exhaust fans - water heaters - chart recorders and more**
- ~ Replace up to 10 timing controls with only 1 SYSTEM MANAGER-10**

Until now, owners of small and medium sized buildings such as retail stores, banks, schools, office buildings and medical facilities were left with a choice between a single time clock for every device or costly energy management systems to meet their building control needs. With 10 channels the System Manager-10 fills this void. This simple 24v AC 10 channel time clock performs most of the functions of a large building control system at a fraction of the cost.

# SYSTEM MANAGER-10

## FEATURES:

- Fully Programmable (5, 1&1)
- 7 day electronic clock
- 365 day calender
- Time of day scheduling
- Independent override per channel
- Ten Separate holiday schedules
- 2-line 32 character LCD display
- Independent 365 day programmability for each of the 10 channels
- Non-volatile memory for all programmed information
- Maintains time during power outage
- Built-in time clock transition to the year 2000
- Pre schedule holidays for each channel
- Copy functions makes data entry easy
- 10 year time clock battery back-up
- Compact design for easy installation
- Low cost per channel**



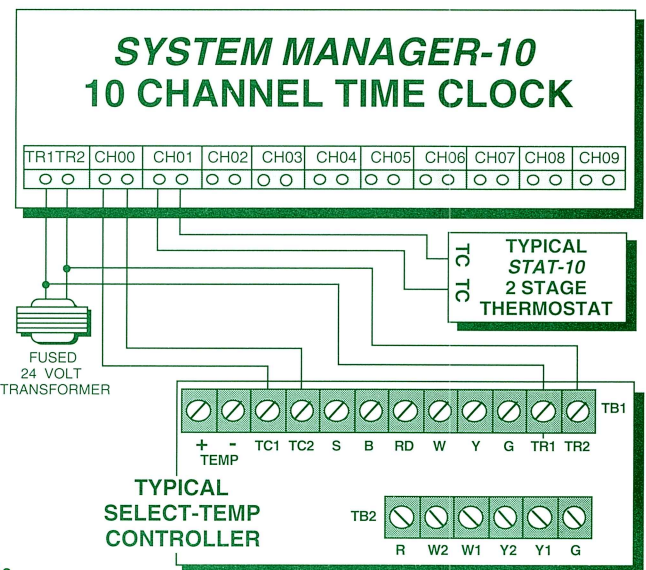
## SYSTEM MANAGER-10

- ~ Capable of different schedules for each channel.
- ~ Programming capability for holidays and special events.
- ~ Controls SELECT-TEMP, SYSTEM 1000 and SYSTEM 2000 Zoning Systems.
- ~ Controls up to 10 stand alone rooftops.
- ~ Optional Windows 95-98 remote monitoring software.

### Technical data:

- Output:** 10 SPST, N.O. relays with dry contacts.
- Switch rating:** 10A/8HP-125V AC  
6A/8HP-277V AC
- Clock battery back-up:** 10 year lithium energy cell.
- Program back-up:** Non-volatile memory.
- Supply voltage:** 24V AC, 20 VA.
- Shortest switch time:** 1 minute
- Clock display:** 12 hour format (AM/PM).
- Terminal connections:** Flat head screw terminal type for up to 16 AWG wire.

Part # SYSM10



 **CALIFORNIA  
ECONOMIZER**  
The Zoning Systems Company  
1-800-228-2966