



Aire-Flo 80™

GAS FURNACE

— UPFLOW/DOWNFLOW/HORIZONTAL

The Aire-Flo 80™ gas furnace is a flexible, efficient gas furnace, that won't let you down. It fits almost any application and offers a good value in the coldest of environments. And it performs its job quietly without a wasteful pilot light.



FEATURES

- 80% AFUE
- Size range 50,000 - 125,000
- 20 year limited warranty on heat exchangers*
- 5 year limited warranty on covered parts*
- Heavy gauge, textured, pre-painted cabinet provides corrosion protection
- Crimped aluminized steel heat exchanger for longer life
- Time delay off for A/C SEER enhancement
- Upflow, downflow or horizontal application
- Honeywell® controls—Smart Valve™ System
- Solid-state Honeywell® fan timer board
- 5 AMP fused circuit protection
- Two-wire twinning
- AGA and CGA approved
- Electronic air cleaner and Aire-Flo™ humidifier hookups
- Three speed blower motor
- Common LP kit for all gas furnaces
- Meets stringent Southern California emissions requirements without use of unreliable NOx rods or screens.

* See warranty certificate for details.

Uncommonly Quiet

Individual balancing of each blower wheel, whisper burners, and the Honeywell® slow opening Smart Valves™ result in a very quiet, single stage 80% gas furnace.

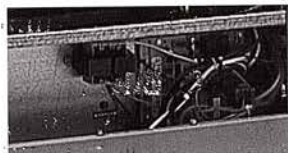
Honeywell® Smart Valve™

Only the amount of energy which is needed is used with Aire-Flo 80™ furnaces. There is no pilot light wasting gas or blowing out.



Easy Diagnostic Sleeve

The Aire-Flo diagnostic sleeve allows the service person to troubleshoot while the unit is running under normal operating conditions, thereby resulting in time and money savings on service calls.



Crimped Heat Exchanger Seams

Our weld-free seam process creates a clean, leak-free seal that is more reliable than conventional welding. The specially designed heat exchanger utilizes mechanical seams which are crimped, rather than welded. The crimp technique increases the life of the heat exchanger because it reduces stress that may develop with either arc or seam welding methods.

UNIT DIMENSIONS

MODEL NUMBER	LENGTH (INCHES)	WIDTH (INCHES)	HEIGHT (INCHES)
AF80MPA050B3	29 1/2	13 1/2	38 1/4
AF80MPA075B3	29 1/2	13 1/2	38 1/4
AF80MPA075B4	29 1/2	17	38 1/4
AF80MPA100B4	29 1/2	17	38 1/4
AF80MPA100B5	29 1/2	20 1/2	38 1/4
AF80MPA125B5	29 1/2	20 1/2	38 1/4

Visit us at www.Aireflo-hvac.com

AIRE-FLO 80™ GAS FURNACES



FEATURES

- 80% AFUE- one of the quietest single stage 80% furnaces you can buy
- Electronic air cleaner connection (115V)
- Humidifier connection (115V)
- 5 amp fuse for protection
- Air conditioner time delay relay built into board for SEER enhancement
- Two wire twinning
- Upflow, horizontal (right or left) & downflow application for installation flexibility
- Heat ranges 50,000 - 125,000 BTUH
- Meets California emission low NO_x standards

LIMITED WARRANTY

- 20 year limited warranty on heat exchanger*
- 5 years on covered parts*

VENTING

- Category I venting
- 4" vent-all models
- Can be side wall vented with Field Controls DGF-2 side wall venting kit or Tjernlund SS1(C) side shot

CONTROLS

- Honeywell® Smart Valve™ System (hot surface pilot)
- Slow opening valve for extra quiet ignition
- Honeywell® Fan Timer Control ST9120C

SAFETY

- AGA & CGA approved
- Safety limit to prevent overheating

HEAT EXCHANGER ASSEMBLY

- 4 pass clamshell for greater reliability
- Aluminized steel primary
- Totally crimped design (no welds)

CABINET

- Heavy gauge, textured, gray prepainted cabinet for greater protection
- Aire-Flo diagnostic sleeve for troubleshooting

BLOWER

- 3 speed PSC motors
- Aire-Flo built & balanced whisper quiet blower wheels

*See warranty certificate for details.

AIRE-FLO 80™ GAS FURNACE

AIRE-FLO™

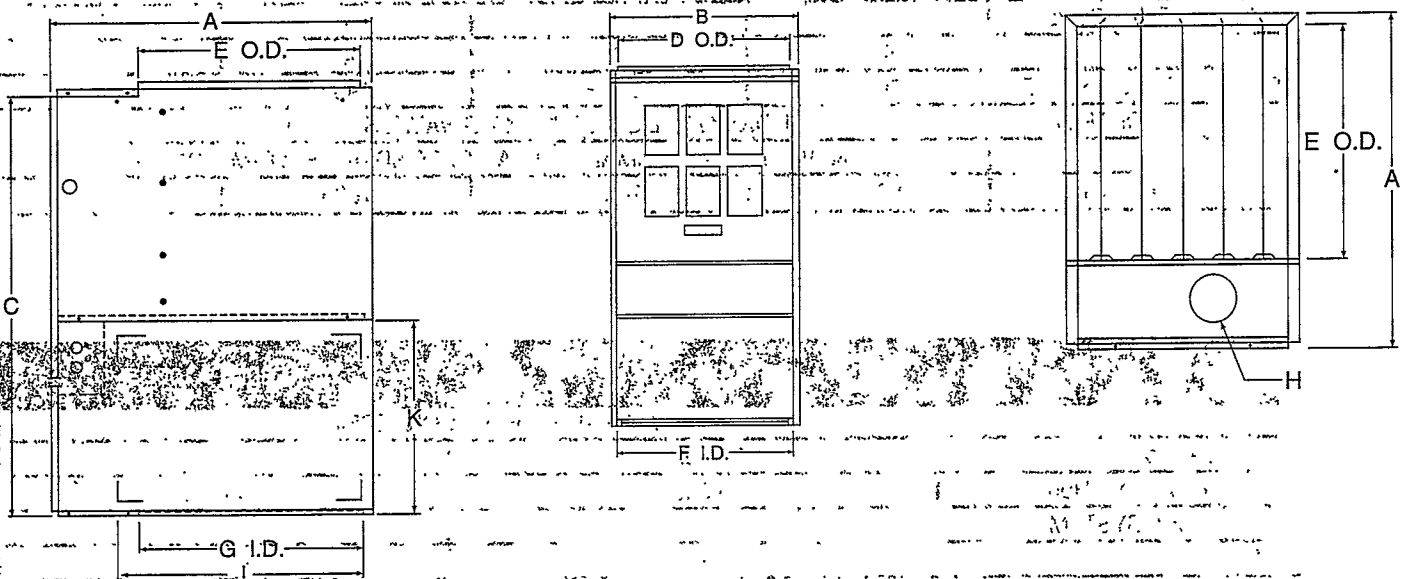


AIRE-FLO 80™ GAS FURNACES

GENERAL LAYOUT

MODEL NUMBER	UNIT DIMENSIONS			SUPPLY DUCT OPENING		RETURN DUCT OPENING		FLUE DIA.	SIDE RETURN CUT-OUT	
	A	B	C	D	E	F	G		J	K
AF80MPA050B3	29 1/2	13-1/2	38-1/4	11 1/2	20 3/8	11 5/8	21 3/8	4	23 1/4	15
AF80MPA075B3	29 1/2	13-1/2	38-1/4	11 1/2	20 3/8	11 5/8	21 3/8	4	23 1/4	15
AF80MPA075B4	29 1/2	17	38 1/4	15	20 3/8	15 1/8	21 3/8	4	23 1/4	15
AF80MPA100B4	29 1/2	17	38 1/4	15	20 3/8	15 1/8	21 3/8	4	23 1/4	15
AF80MPA100B5	29 1/2	20 1/2	38 1/4	18 1/2	20 3/8	18 5/8	21 3/8	4	23 1/4	15
AF80MPA125B5	29 1/2	20 1/2	38 1/4	18 1/2	20 3/8	18 5/8	21 3/8	4	23 1/4	15

* Bottom door removed



NOTE: Dimensions are in inches



Visit us at www.Aireflo-hvac.com

AIRE-FLO 80™ GAS FURNACES

UNIT SPECIFICATIONS

	AF80MPA050B3	AF80MPA075B3	AF80MPA100B4	AF80MPA125B5
GAS	NATURAL (LP WITH CONVERSION KIT)			
INPUT RATE (BTU per Hour)	50,000	75,000	100,000	125,000
HEATING CAPACITY (BTU per Hour)	40,000	60,000	80,000	100,000
AFUE (ISOLATED COMB. SYSTEM)	80.0%	80.0%	80.0%	80.0%
TEMPERATURE RISE	45-75 F	45-75 F	45-75 F	45-75 F
VOLTS / PHASE / HERTZ	115 / 1 / 60			
STATIC PRESSURE	CERTIFIED FOR 0.50" W.C. MAXIMUM EXTERNAL STATIC			
AIR FLOW (w/o FILTER) @ .50" STATIC	1235CFM	1235CFM	1845CFM	2270CFM
BLOWER MOTOR HORSEPOWER	1/3	1/3	1/2	1/2
BLOWER WHEEL SIZE (dia x width)	10 x 6	10 x 6	12 x 9	12 x 12
NUMBER OF HEAT EXCHANGERS	2	3	4	5
FLUE SIZE (diameter)	4"	4"	4"	4"
LIMIT CONTROL, SNAP DISK STYLE	170 F	170 F	190 F	190 F
GAS VALVE / IGNITION CONTROL	HONEYWELL SV9501* SMART VALVE SYSTEM (1/2 X 1/2)			
TRANSFORMER	40 VA. 115 VAC PRIMARY, 24 VAC SECONDARY, FOOT-MOUNTED			
MAXIMUM OUTLET TEMPERATURE	180 F	180 F	180 F	180 F

	AF80MPA075B4	AF80MPA100B5
GAS	NATURAL (LP WITH CONVERSION KIT)	
INPUT RATE (BTU per Hour)	75,000	100,000
HEATING CAPACITY (BTU per Hour)	60,000	80,000
AFUE (ISOLATED COMB. SYSTEM)	80%	80%
TEMPERATURE RISE	30-60 F	30-60 F
VOLTS/PHASE/HERTZ	115/1/60	
STATIC PRESSURE	CERTIFIED FOR 0.5" W.C. MAXIMUM EXTERNAL STATIC	
AIR FLOW (w/o FILTER) @ .50" STATIC	1845 CFM	2270 CFM
BLOWER MOTOR HORSEPOWER	1/2	1/2
BLOWER WHEEL SIZE (dia x width)	12 X 9	12 X 12
NUMBER OF HEAT EXCHANGERS	3	4
FLUE SIZE (diameter)	4"	4"
LIMIT CONTROL, SNAP DISK STYLE	170 F	190 F
GAS VALVE / IGNITION CONTROL	HONEYWELL SV9501* SMART VALVE SYSTEM (1/2 X 1/2)	
TRANSFORMER	40 VA. 115 VAC PRIMARY, 24 VAC SECONDARY, FOOT-MOUNTED	
MAXIMUM OUTLET TEMPERATURE	180 F	180 F
LP CONVERSION KIT ACCESSORY	68L72	

* As of April 24, 1998.

AIRE-FLO 80™ GAS FURNACES

FLOW RATE DATA

MODEL NUMBER	BLOWER SPEED:	EXTERNAL STATIC									
		0.1	0.2	0.3	0.4	0.5	0.6	0.7	0.8	0.9	1.0
AF80MPA050B3 (10 X 6 WHEEL) (1/3 HP MOTOR)	LOW	805	800	790	770	750	715	685	620	535	385
	MED	1140	1125	1090	1060	1010	955	880	815	710	580
	HIGH	1530	1475	1410	1325	1235	1150	1065	985	855	750
AF80MPA075B3 (10 X 6 WHEEL) (1/3 HP MOTOR)	LOW	805	800	790	770	750	715	685	620	535	385
	MED	1140	1125	1090	1060	1010	955	880	815	710	580
	HIGH	1530	1475	1410	1325	1235	1155	1065	985	855	720
AF80MPA075B4 (12 X 9 WHEEL) (1/2 HP MOTOR)	LOW	1375	1365	1350	1330	1315	1295	1240	1195	1085	975
	MED	1625	1610	1595	1580	1550	1510	1475	1425	1335	1225
	HIGH	2020	1945	1910	1880	1845	1800	1755	1690	1605	1470
AF80MPA100B4 (12 X 9 WHEEL) (1/2 HP MOTOR)	LOW	1375	1365	1350	1330	1315	1295	1240	1195	1085	975
	MED	1625	1610	1595	1580	1550	1510	1475	1425	1335	1225
	HIGH	2020	1945	1910	1880	1845	1800	1755	1690	1605	1470
AF80MPA100B5 (12 X 12 WHEEL) (1/2 HP MOTOR)	LOW	1440	1405	1365	1315	1270	1200	1155	1060	985	895
	MED	2010	1985	1955	1910	1840	1770	1695	1630	1535	1395
	HIGH	2530	2470	2425	2355	2270	2195	2100	1995	1880	1760
AF80MPA125B5 (12 X 12 WHEEL) (1/2 HP MOTOR)	LOW	1440	1405	1365	1315	1270	1200	1155	1060	985	895
	MED	2010	1985	1955	1910	1840	1770	1695	1630	1535	1395
	HIGH	2530	2470	2425	2355	2270	2195	2100	1995	1880	1760

NOTES: 1) Air flow values in cubic feet per minute (CFM), rounded to nearest five (5) CFM
 2) Data taken without filters in place